



fabrics

IMAGINE & CREATE



Fall 2018



Adeline
QT Fabrics **8**



American Pride
Dan Morris **10**



Amour de Fleur
Ink & Arrow **12**



Annabelle
QT Fabrics **14**



Artworks XI
QT Fabrics **16**



Bohemian Rhapsody
Dan Morris **18**



Cafe All Day
Dan Morris **56**



Crazy for Crafting
Leslie Moak Murray **20**



Delilah
QT Fabrics **22**



Fancy Felines
Robert May **24**



Gettysburg
QT Fabrics **26**

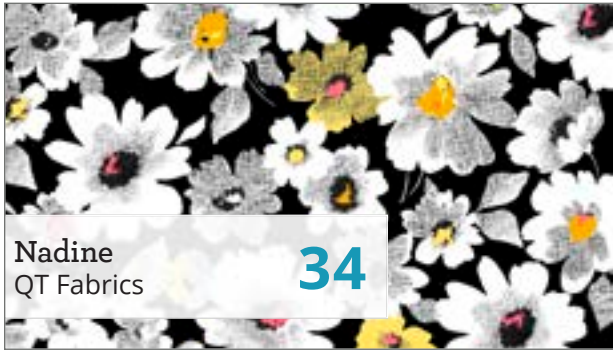


Happy Easter
House of Turnowsky **48**



Jesus Loves the Little Children
Cindy Sepp for QT Fabrics **50**

TABLE OF CONTENTS



Projects **60-65**

BASICS

Avalon 108" **70**

Color Blends **68**

Color Blends II **67**

Harmony **72**

Illusions **76**

Luminous Lace **78**

Lyla Damask **79**

Metals **80**

Holiday Metals **81**

Ombre Scroll **82**

Ombre Scroll Wide **71**

Ombre Stitches **83**

Pixie Dots **84**

Scrollscapes **86**

Scrollscapes II **87**

Sorbets **88**

Sorbet Essentials **90**

Temptations **92**

USA Regional Sales Managers **94**

International Distributors **95**



**Our Customer Service Department is available
Monday - Friday: 8:30 AM - 5:00 PM EST**

Tel: 800-876-2756

Fax: 800-540-7063 • 401-275-9328

QTFabrics.com

**View collections online and browse tools that support you, the shop owner.
Shop when YOU want!**

Log on now to request an account

QT Fabrics Studio

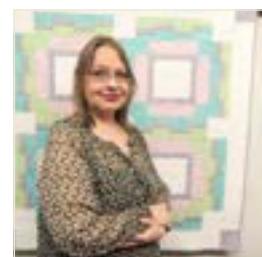


**Artworks XI, Nadine,
Sew N Go, Delilah,
Annabelle, Adeline,
Mirage, Gettysburg-
Pages 8, 12, 14, 16,
22, 26, 30, 34, 58, 46**

QT Fabrics lines are created in-house by our talented design team in New York. Led by Design Director Janet Andersen, our studio develops fabric prints reflecting the latest trends in color and design.

Rosanne Abbenda, Micki Williams, Amy Borenstein, Cindy Sepp, and Monica Zhu work together to bring fabrics styled for dynamic projects with a modern flair.

Cindy Sepp



**Jesus Loves the Little
Children
Page 50**

She has been happily working as part of the QT Fabrics "In House" designer team for over five years.

Cindy graduated from the Fashion Institute of Technology in 1992 and has been actively working in the Textile/Surface design industry since 1990. She has had various print design experience ranging from the home furnishing industry, to novelty boxer shorts, to the apparel industry, to silk scarf design.

Our QT Fabrics team extends beyond our employee-owners. We work with creative and dedicated artists to expand our in-house studio talent. We are committed to providing an array of collections suited to many different styles. Collaboration is the QT Fabrics way!

R. & B. Latham



Nocturnal Wonders
Page 54

Rebecca Latham is a realistic wildlife and nature painter working in finely detailed watercolors. Her art is inspired by adventures in the outdoors. The artist's work is represented by galleries across the United States. She is a member of the invitation-only International Guild of Realism, a signature member of Artists for Conservation as well as the Society of Animal Artists.

House of Turnowsky



Safari in the Sky, Slow Poke
Pages 38, 42, 48

Based in Tel Aviv since 1940, Turnowsky is a global brand well-known for its luxury paper products, unique designs and original gifts including greetings cards, postcards, calendars and stationery. These are designed in our own studios and sold exclusively through selected distributors all over the world.

Desiree Habicht



Party Like A Unicorn
Pages 36

Desiree is a multi-talented artist whose works range from museum quality fine art paintings, national and international award winning fiber art quilts, murals and faux finishes for the interior design industry and designs for commercial licensing. Desiree loves to use the bright, bold colors of nature and is best known for her whimsical imagery.

Robert May



Fancy Felines
Page 24

Mark Keathley has been "chasing the light" since he was 10 years old on a farm in East Texas. "Growing up in the country gave me a love for the outdoors and an appreciation for the moment." Vividly recalling a covey of quail bursting to flight in the Piney woods hunting as a teen, or the mist rising off the pond while fishing in the early morning, Mark has been enamored with mood, light, drama, and color.

Barbarian



Wild & Fruity
Page 52

Barbra Ignatiev, the artist behind Barbarian. I believe that color can have a big impact on your attitude. Through my work, I hope to inspire you to reach bigger and be bolder and also have some fun in the process. My brand, Barbarian, encapsulates fun, adventure, and benevolent vibes.

Dan Morris



Must Love Dogs, American Pride, Cafe All Day, Bohemian Rhapsody
Pages 10, 18, 32, 56

Since 1994 Dan Morris has been creating innovative, original art for a broad array of industries. From T-shirts for the Grateful Dead, 1960's inspired peace stickers, and celestial calendars, to more traditional home and gift markets, Dan has a wide range of eclectic artwork spanning almost every artistic theme.

Leslie Moak Murray



Crazy For Crafting
Page 20

No matter what else I was doing, I was always drawing. I've been drawing since the age of three when I made a three-foot-high wraparound wall mural in crayon in my parents' bedroom. I remember being surprised that my mom wasn't as happy as I thought she'd be. But I hope you'll be happy to enjoy these images I have drawn while watching cheesy horror movies at home. Do I have a great life or what. Buy as many as you want because I need new shoes.

Santoro Mirabelle



Midnight Garden
Page 28

Santoro®'s Mirabelle collection is a portfolio of beautiful, enchanting art; elegant and sophisticated.

The delicate, wistful illustrations of graceful female figures are exquisitely detailed, embellished with stylized floral motifs, vibrant butterflies, brilliant birds and other intriguing imagery, and layered with ornate patterns and decorative borders to create these romantic and fascinating artworks.

Caroline Critchfield



Sweet Caroline
Page 44

Caroline Fairbanks-Critchfield is the author, quilt pattern designer, and blogger behind the popular sewing website www.sewcanshe.com. Her easy to follow step-by-step tutorials plus sewing tips and secrets keep her fans and readers keep coming back for more. Caroline lives in Palm Bay, Florida and spends her free time making quilts.

Victoria Whitlam



Shop Hop
Pages 40

Victoria has been an artist and illustrator now for over 20 years, exhibiting internationally and licensing designs to high street brands.

She loves to express the detail in the scene she sees; whether that be in her free motion stitched, colour rich work using the sewing machine as a fine art tool, the delicate hand stitched applique pictures or her very latest work using collage to create intricate illustrations. 5

EMPLOYEE OWNERS

PRESIDENT



Ken Gamache

CUSTOMER SERVICE



John Fraioli



Luis Torres



Debra Voelker

DESIGN STUDIO



Janet Andersen



Rosanne Abbenda



Micki Williams



Cindy Sepp



Monika Zhu



Amy Borenstein

SUPPLY CHAIN



Thomas J. Kemble



John Ferreira

MARKETING



Tiffany Jawor-Smith



Brian Millar



Deb Finan

REGIONAL SALES MANAGERS



Jayne Clark



Debra Coffman



Kevin Driscoll



Mark Economy



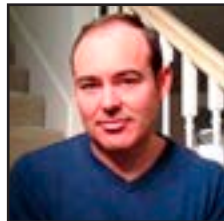
Mike Flynn



Ann Haley



Martha Manning-Jurey



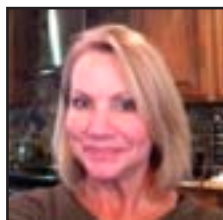
Coby McComas



Jesus Montero



Kay Peterson



Tammie Randle



Barbara Wing



Nadine

Adeline

A delight of glamorous prints in avant garde colors. On-trend navy brings drama while bold floral blooms are accented with striking linework. With unexpected combinations of squiggly line prints and delicate floral coordinates, there is no risk in creating a gorgeous project!



January Delivery
4 Prints, 12 Color Combos

QT



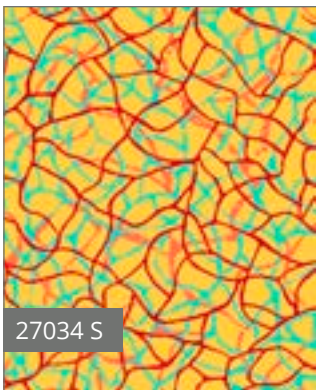
27033 N



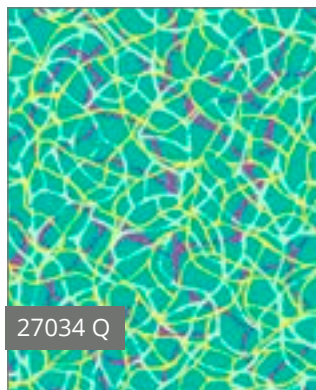
27033 S



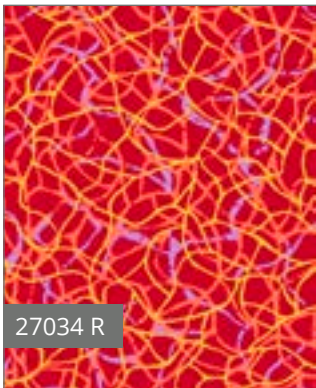
27033 H



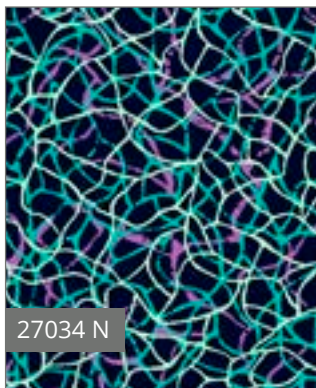
27034 S



27034 Q



27034 R



27034 N



Pattern:
Sally Shirt Dress
from Serendipity Studio



Pattern:
Ruffle Trio - Large Bag
from Indigo Junction

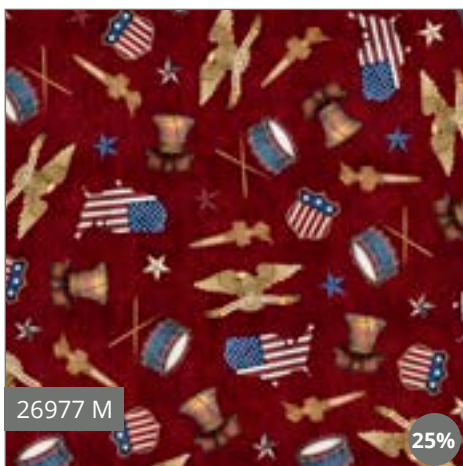
QT Studio



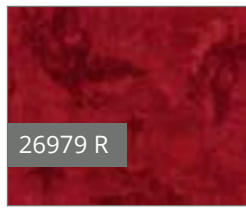
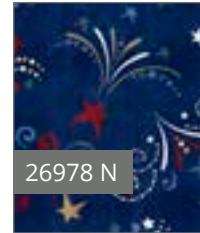
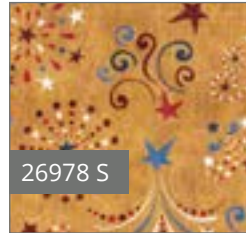
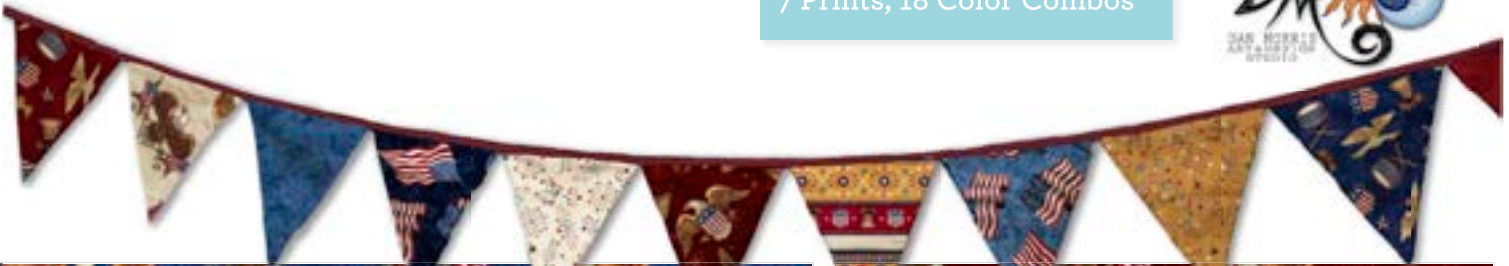
©QT Fabrics Designs shown at 50% scale unless otherwise noted

AMERICAN PRIDE

Celebrate our great country with the newest patriotic collection by ©Dan Morris for QT. The U.S. flag panel is unique with the smaller patches included. Cut them up or keep it together for a large focal panel. Create a stunning Quilts of Valor quilt to share your American Pride!



February Delivery
7 Prints, 18 Color Combos



Dan Morris



Pattern: The Shopper from Indygo Junction

AMOUR de FLEUR

Just a spritz of these pretty perfume fabrics is enough to make a scent-sational project! Retro whimsy and exquisite color combine for a collection sure to star in a playful purse, swanky skirt or fabulous quilt!



27053 Z



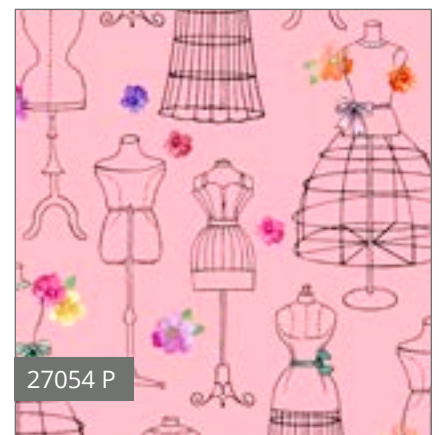
27054 J



27054 L



27054 Q



27054 P

Pattern:
Everyday Tank from Indigo Junction
Rhiannon Shirt from Serendipity Studio



look for us
in every print

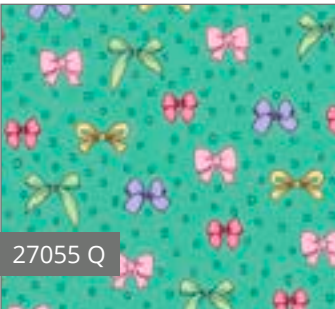
look for us
in every print



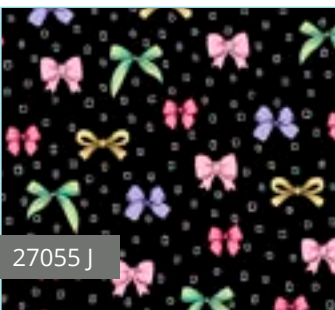
January Delivery
3 Prints, 10 Color Combos



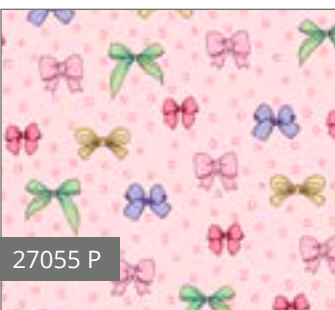
27055 Z



27055 Q



27055 J



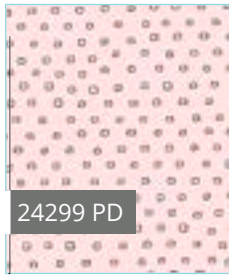
27055 P



27053 J



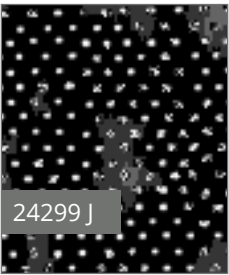
look for us
in every print



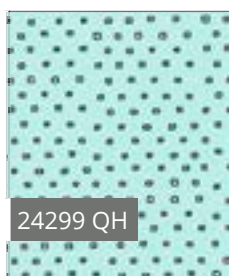
24299 PD



24299 LV



24299 J



24299 QH

QT Studio

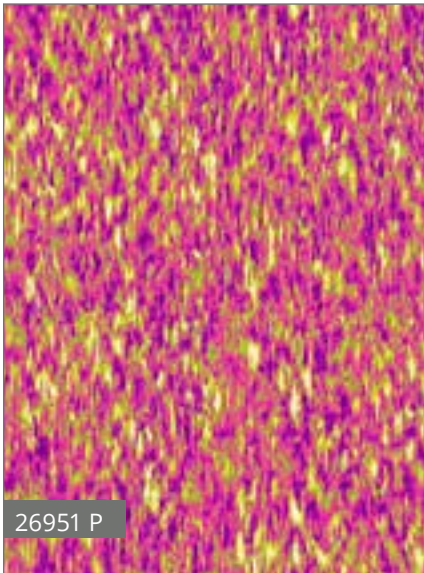
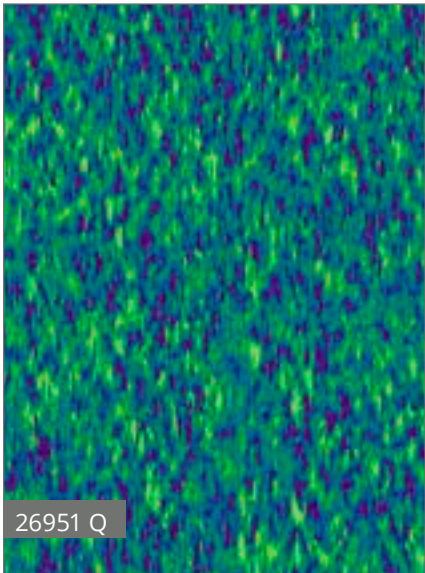
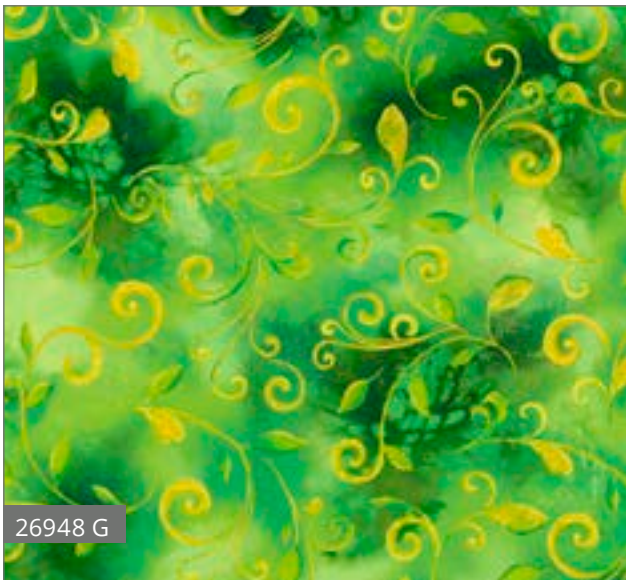
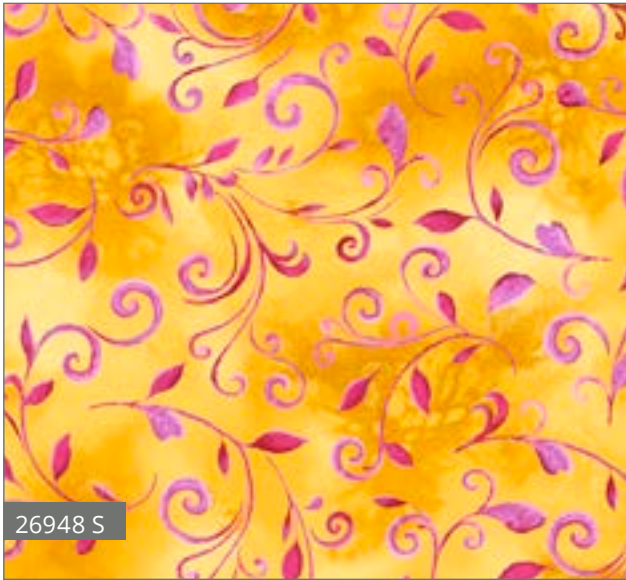


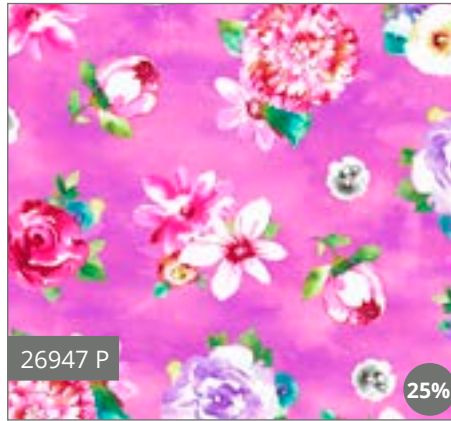
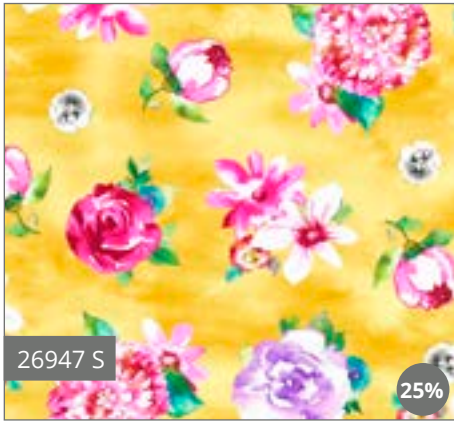
Pattern: The Retreat Bag 2.0 from Emmaline Bags

©Ink & Arrow for QT Fabrics
Designs shown at 50% scale unless otherwise noted

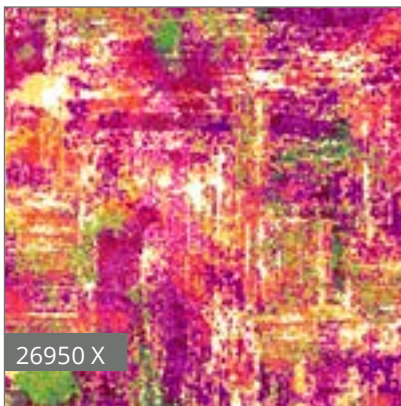
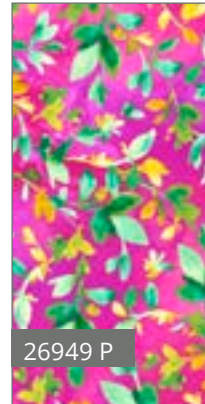
Annabelle

Not your grandma's floral collection! Textural prints mixed with watercolor washes and bold color make for a swanky yet sweet line of fabric! Let your next quilt project come to life with these chic swirls, leaves and flowers.





Pattern: Tasty Table Runner from Jaybird Quilts



QT Studio



ARTWORKS

Your masterpiece awaits with these gorgeous digital prints with vivid color and detail. Painterly swirls bring a modern twist to the Peacock and Angel of Patience by ©Victoria Watkins. Sunset Lake is a must-quilt for your favorite fishing enthusiast by ©Jim Todd. And a creative moose and bear patch panel is from the creativity of ©Cynthia Fisher



26983 X

36" x 44" ©Jim Todd



26986 X

24" x 44" ©Cynthia Fisher

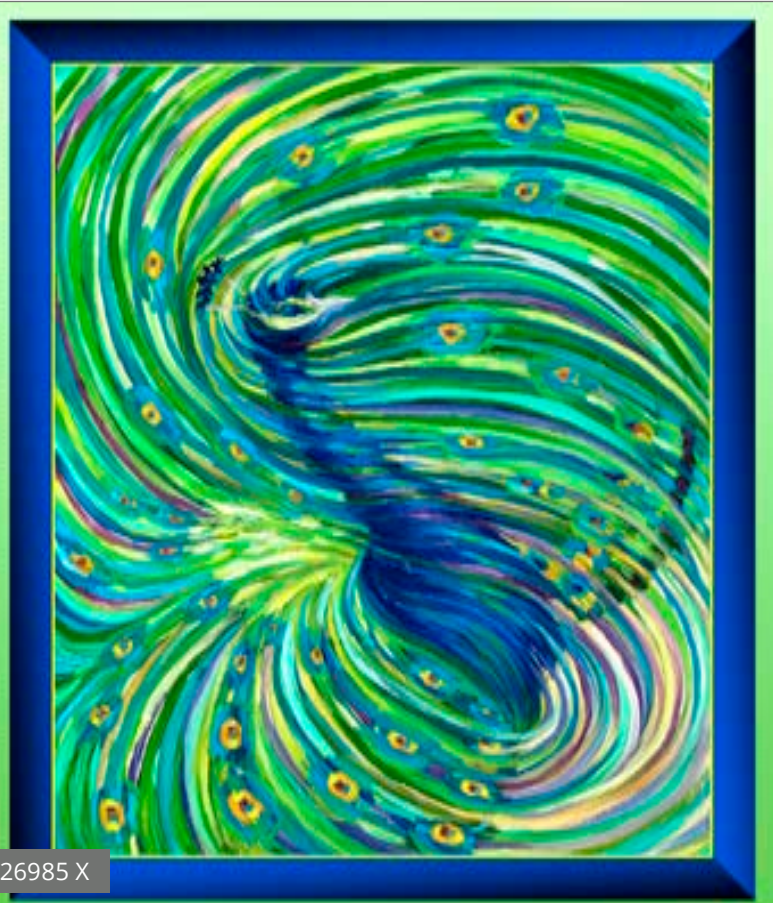
February Delivery
5 Prints, 6 Color Combos

QT



26754 B

Full repeat measures 12" x 7 1/4"



26985 X

36" x 44" ©Victoria Watkins



26984 X

36" x 44" ©Victoria Watkins



26754 G

Full repeat measures 12" x 7 1/4"



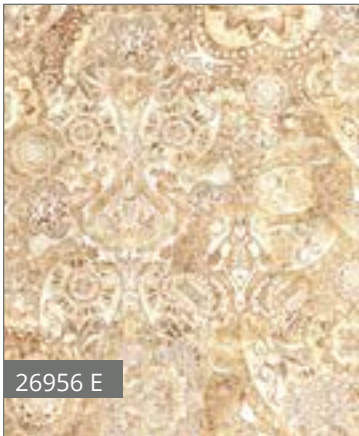
An ombre print with tons of beautiful detail delights in 28 colors from ©Dan Morris. This full width of fabric repeat provides lots of meandering color tones for great piecing and projects that pop. Great as a coordinate or stand-alone print, these fabrics are sure to become your favorite go-to color crush.

In Stock

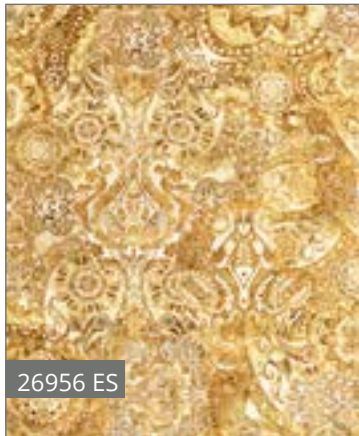


26956 AE

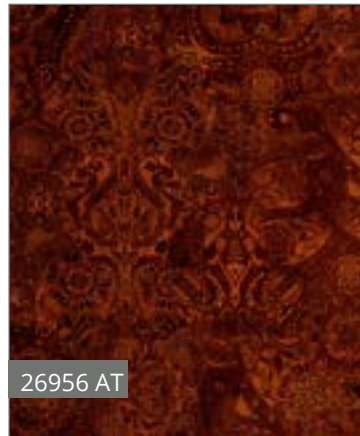
Full repeat shown measures 24" x 43"



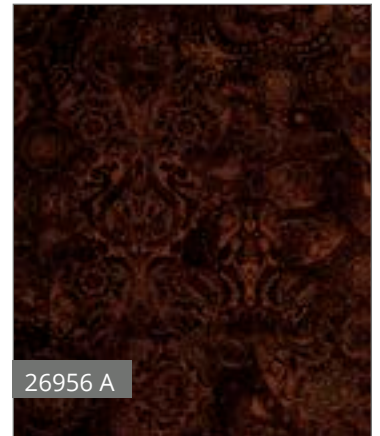
26956 E



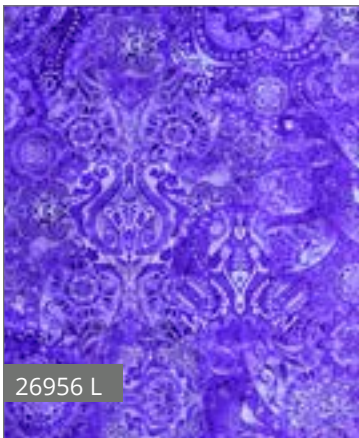
26956 ES



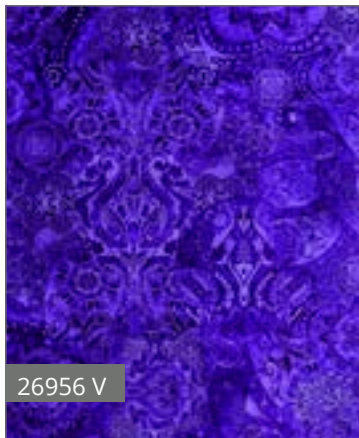
26956 AT



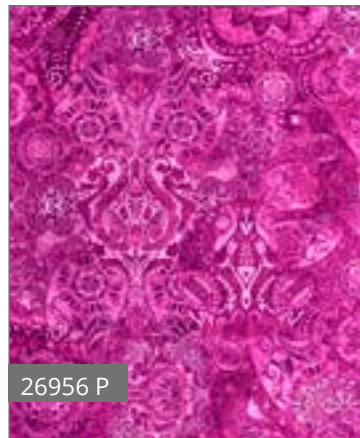
26956 A



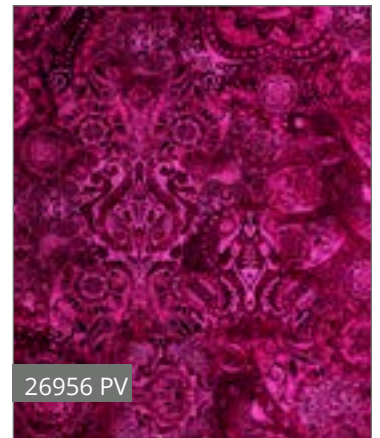
26956 L



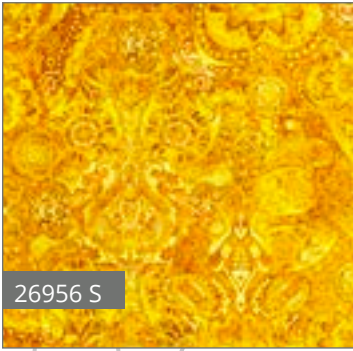
26956 V



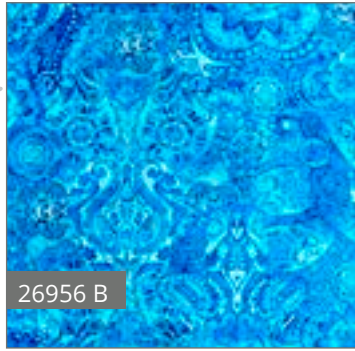
26956 P



26956 PV



26956 S



26956 B



26956 BY



26956 W



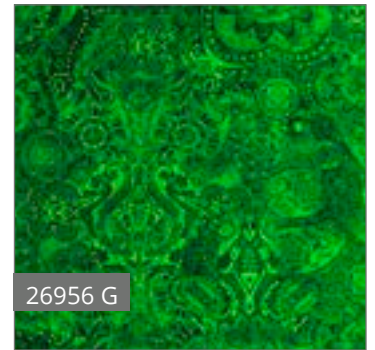
26956 SO



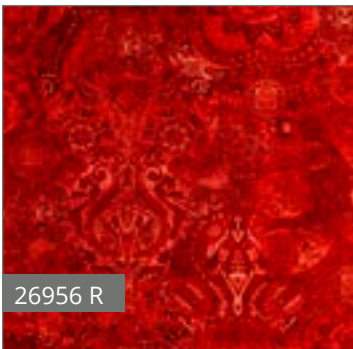
26956 Q



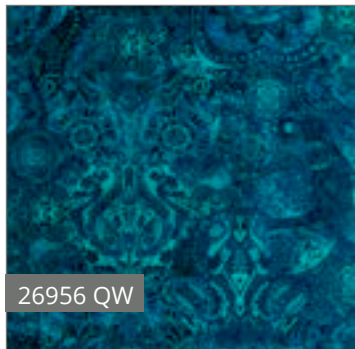
26956 GH



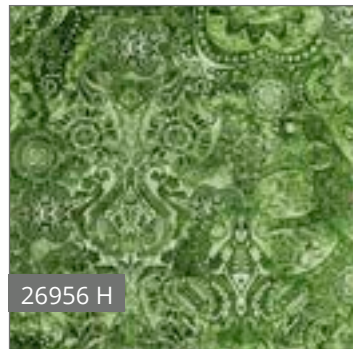
26956 G



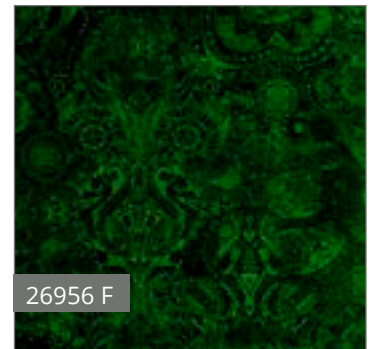
26956 R



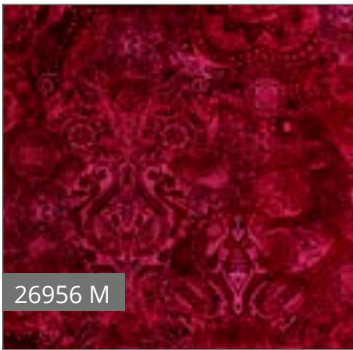
26956 QW



26956 H



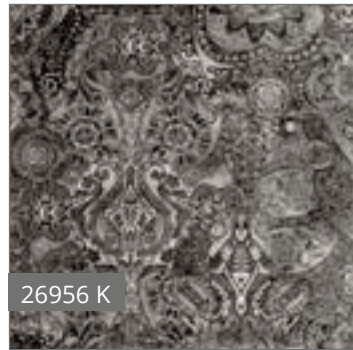
26956 F



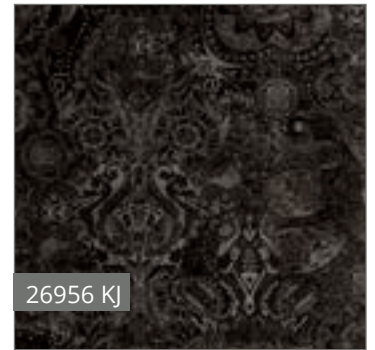
26956 M



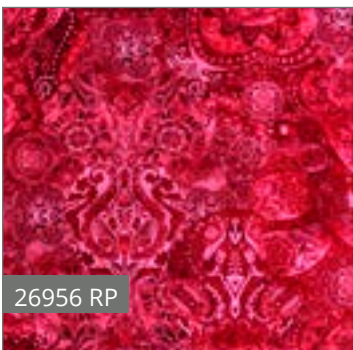
26956 KZ



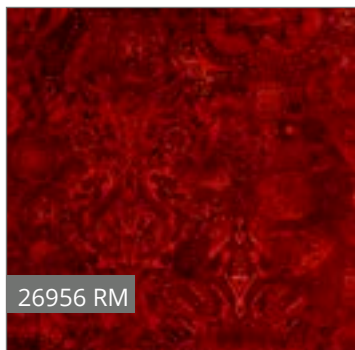
26956 K



26956 KJ



26956 RP



26956 RM



26956 ST

Dan Morris



Crazy for Crafting

Leslie Moak Murray is back with this crafty line of fabrics. We can all agree that crafting is our kind of happy place. Now, you can celebrate buttons and ribbon and yarn and paint with crafty little fabric projects! So many craft ideas... so little time!



26968 X



26969 P



26969 B

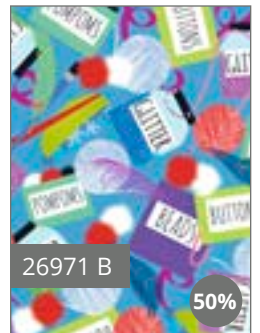


26969 H



Mini Kits

a Sarah Lawson Pattern



26971 B

50%



26971 G

50%



26971 V

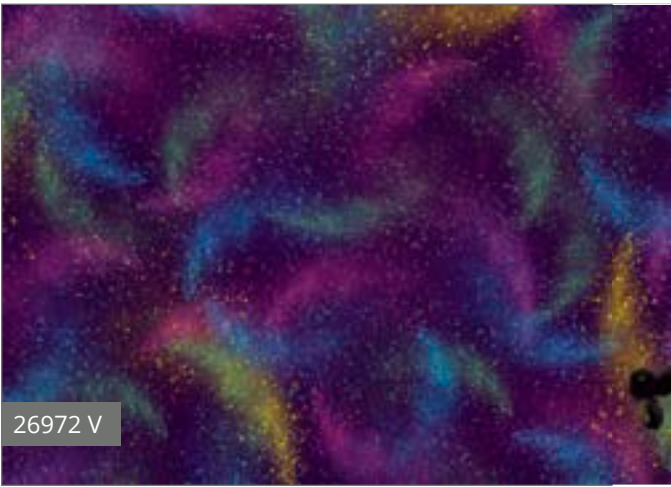
50%



26967 X



26972 Z



26972 V



26970 Z



26970 P



26970 V

Indygo Junction_Very Mary Apron

Leslie Moak Murray

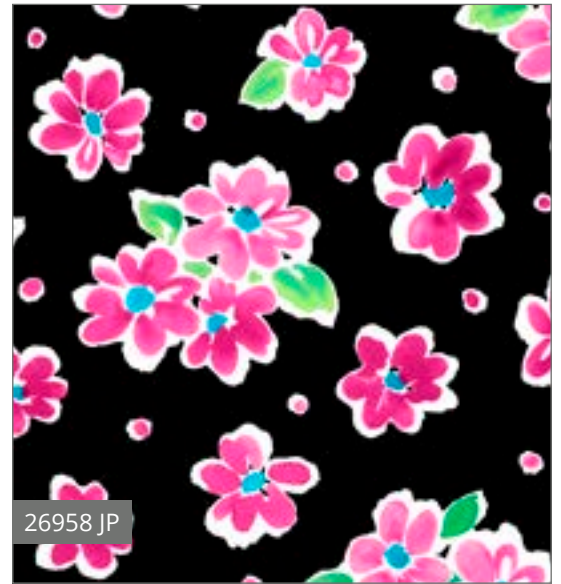


Delilah

As pretty and bright as the name suggests, Delilah is a fun and vibrant collection. Watercolor florals with geometrics, dots, squiggles and fashionable feathers gather for prints with pizzazz for projects that pop!



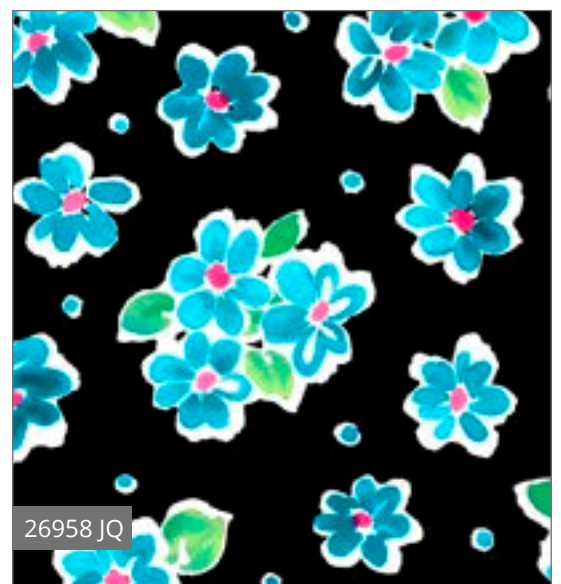
26957 X



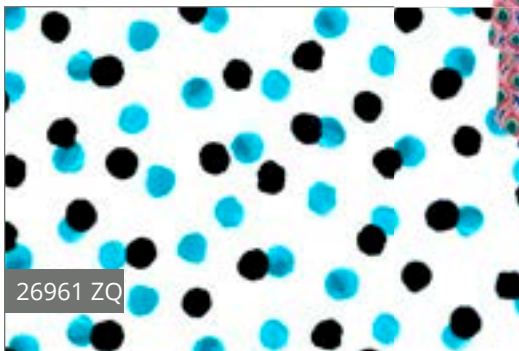
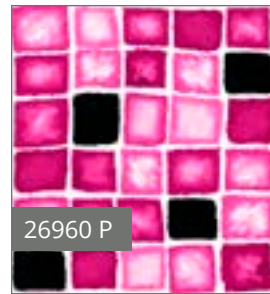
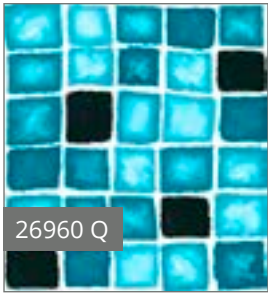
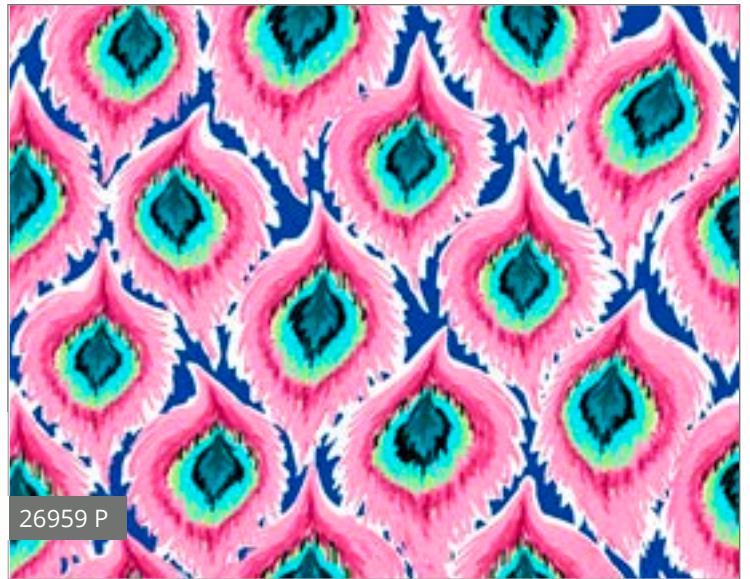
26958 JP



26958 Q



26958 JQ



©QT Fabrics Designs shown at 50% scale unless otherwise noted



QT Studio

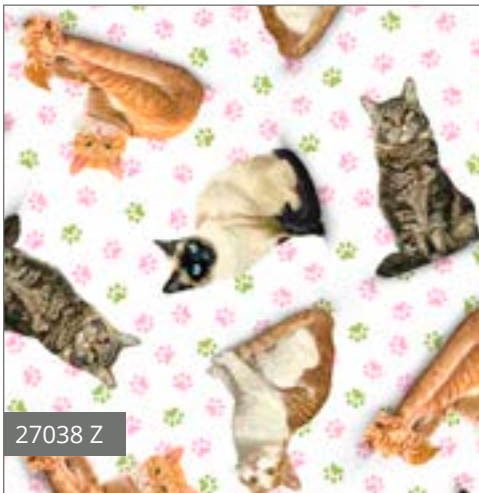


FANCY FELINES

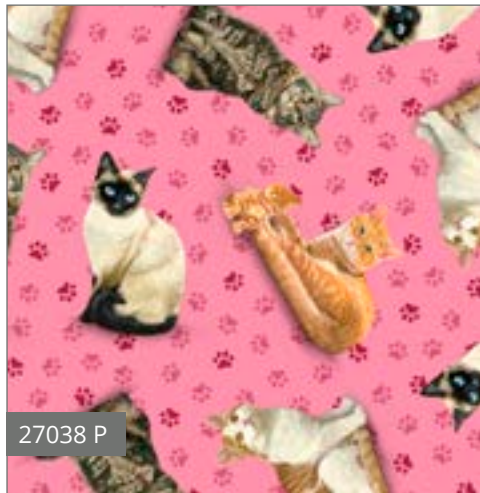
These cats spend their day in leisure among the flowers. A pillow panel stars in this collection with pretty florals and window scenes. Purrfect projects for your favorite kitty or feline enthusiast await!



27035 G



27038 Z



27038 P



27038 G

February Delivery
5 Prints, 8 Color Combos

Robert J. May



27036 P

25%



27036 G

25%



27037 X



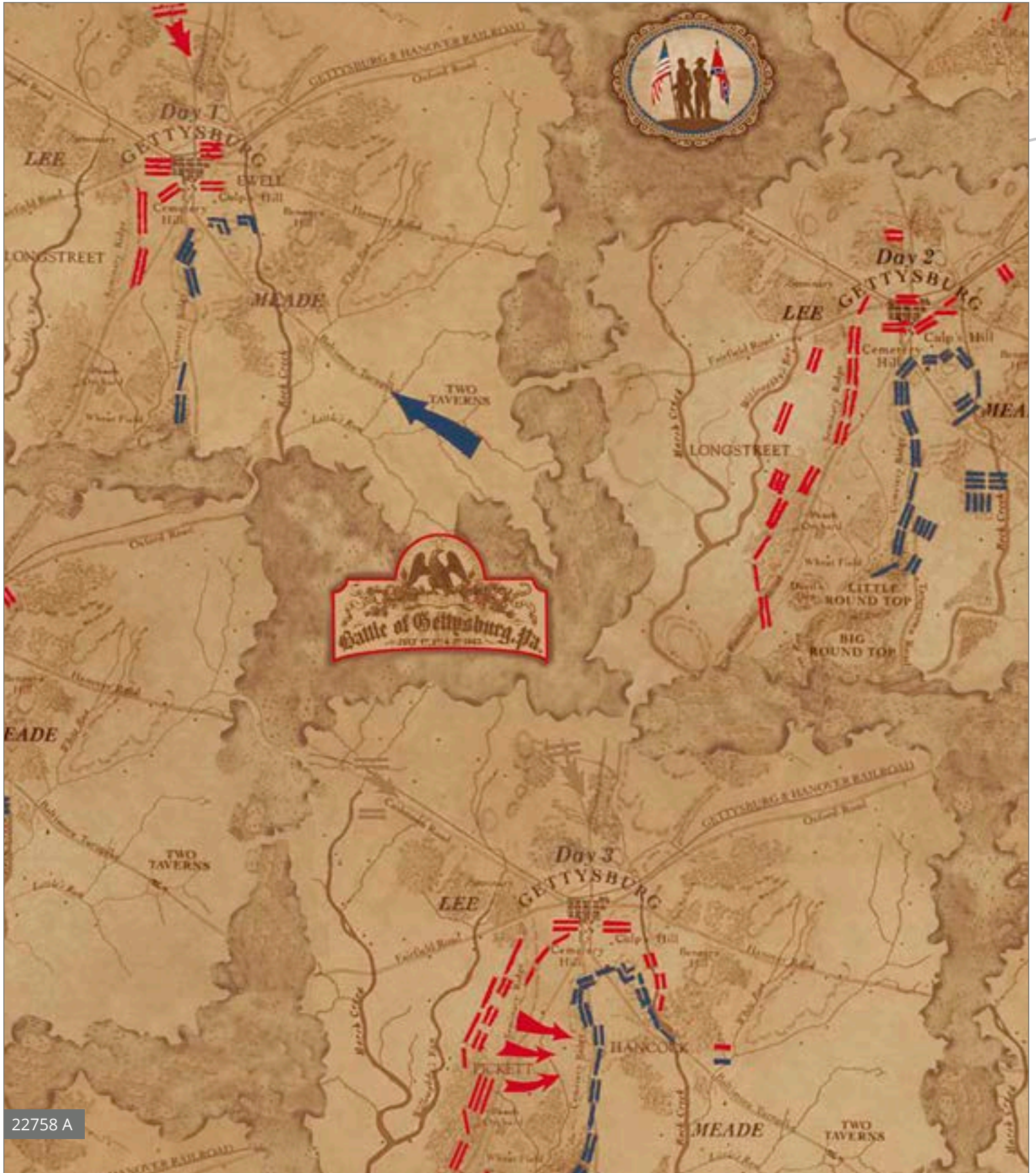
27039 GP

Robert
May



Gettysburg

Gettysburg and its pivotal role in American history is commemorated in this collection of fabrics. Patriotic prints with a nod to our forefathers come together for an assortment of fabrics ready to become a distinguished project.



22758 A



22756 E



22762 R



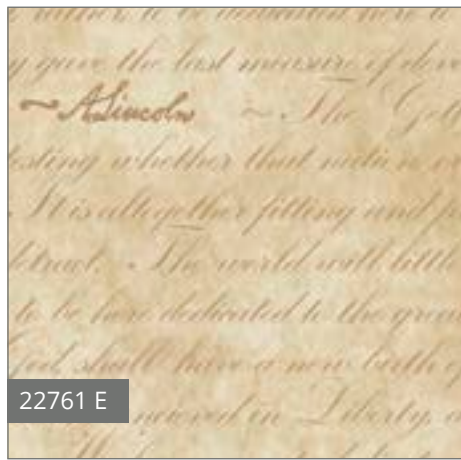
22762 E



22762 N



22760 A



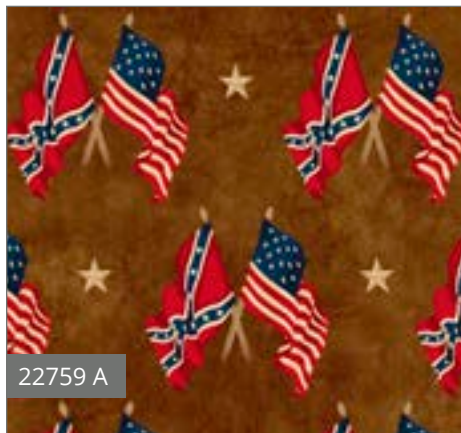
22761 E



22760 E



22759 E



22759 A

QT Studio



Midnight Garden

Sophisticated ladies with jewel tone accents are flourishing in this new collection by Mirabelle for ©Santoro. The delicate florals, pretty colors and coordinates are waiting for a stunning quilt project!



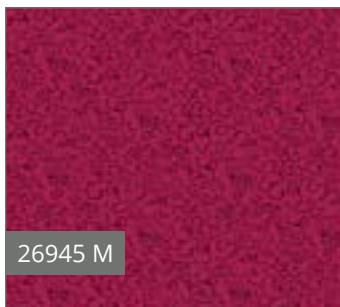
26944 L



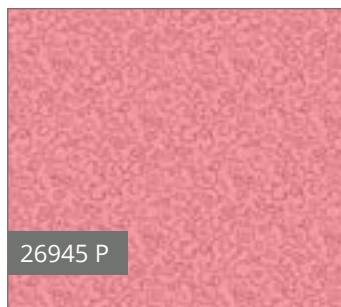
26944 P



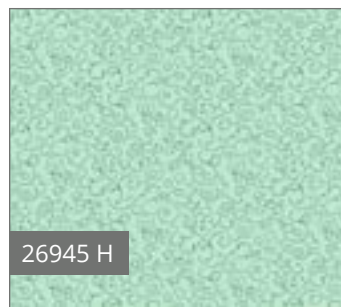
26944 B



26945 M



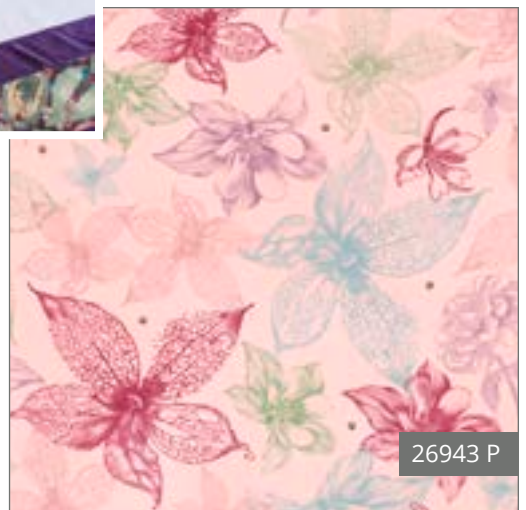
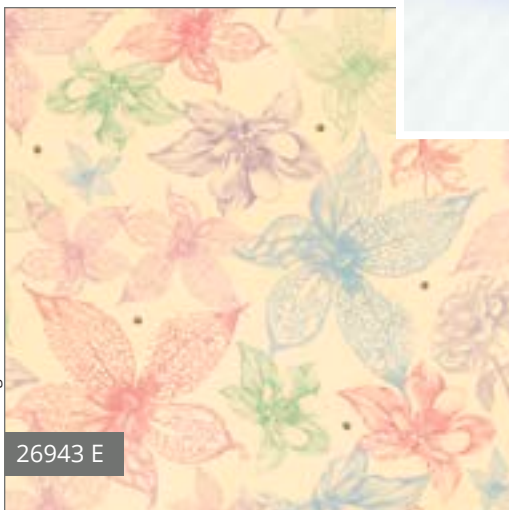
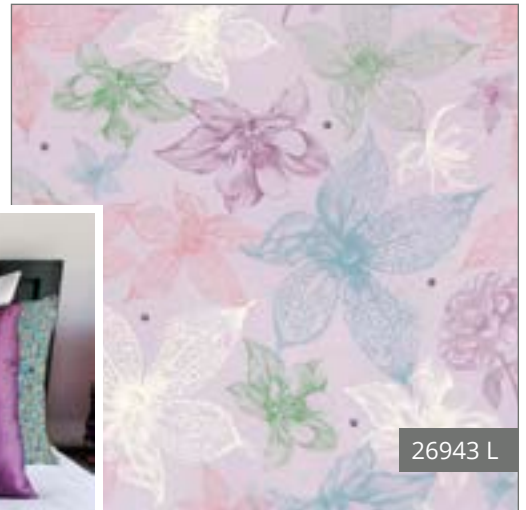
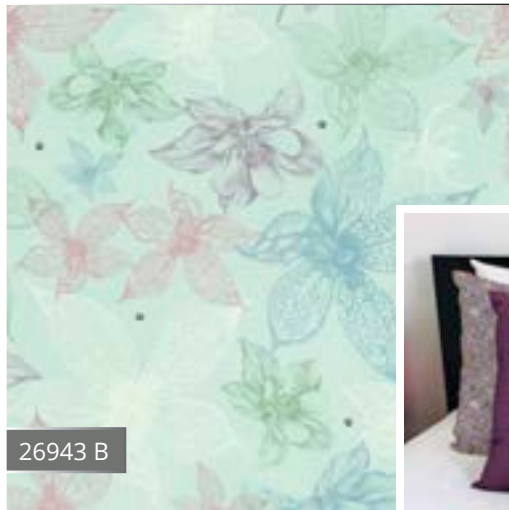
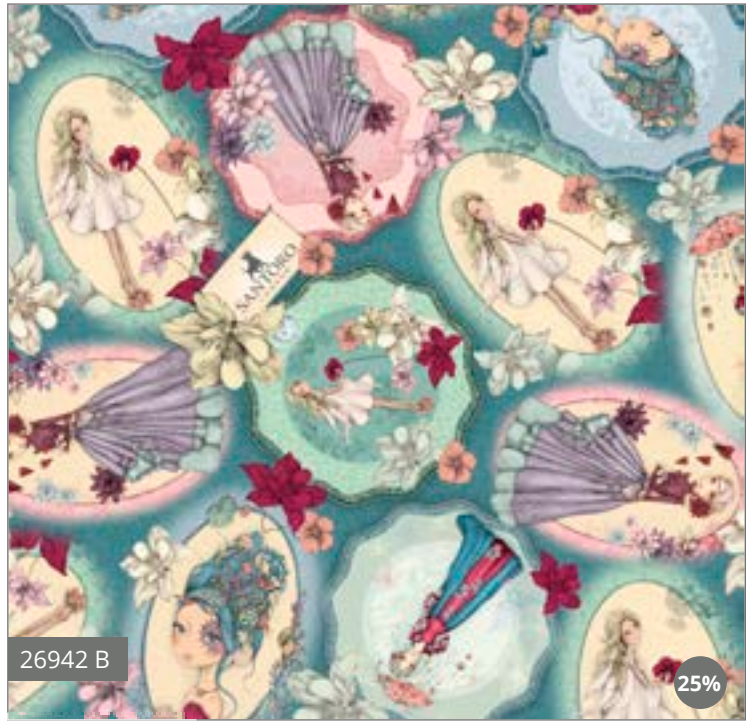
26945 P



26945 H



February Delivery
5 Prints, 13 Color Combos



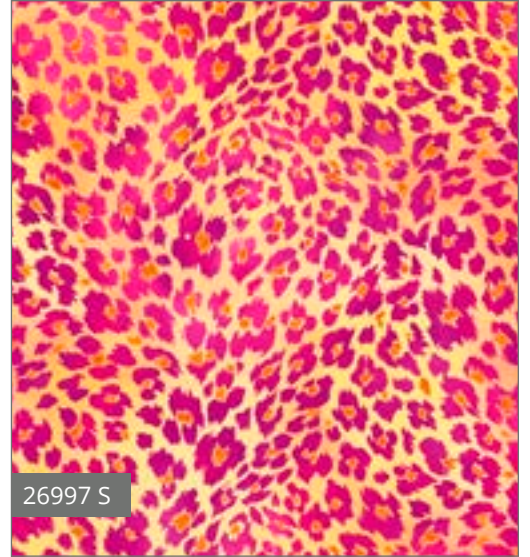
© Santoro
Designs shown at 50% scale unless otherwise noted

MIRAGE

The allure of this collection is no illusion, these chromatic prints bring delight to those who love pops of color! Vivid and textural, these fabrics will create a rainbow of project opportunities.



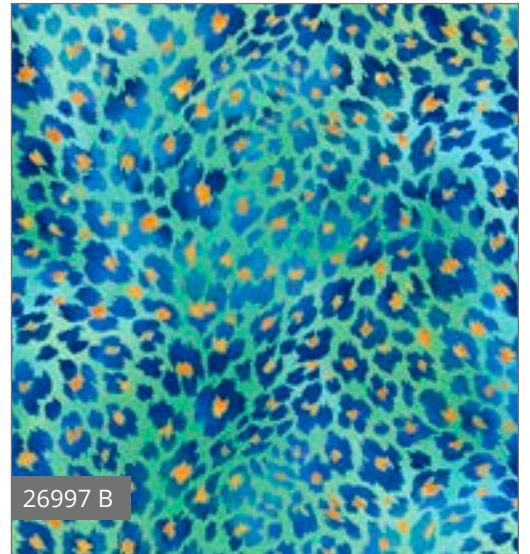
26995 X



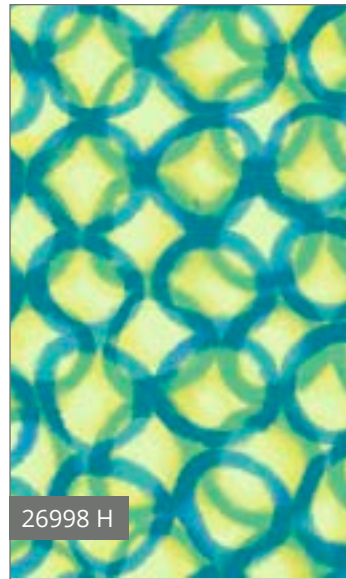
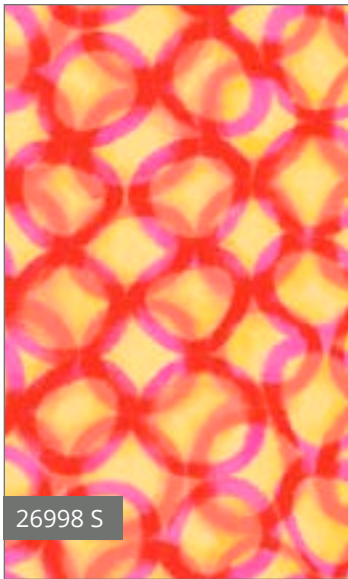
26997 S



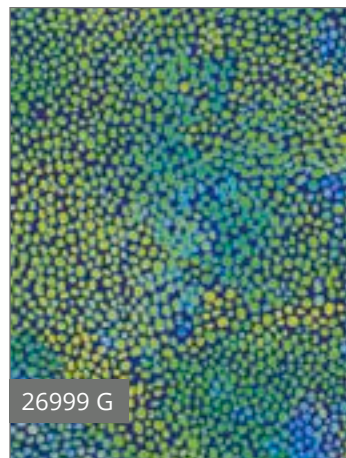
26997 G



26997 B



Pattern:
Time After Time Runner from Ett and Eddy
The Stitch TV Show



QT Studio



Must Love Dogs

This new collection from ©Dan Morris celebrates our favorite best friend, the dog! Many different breeds are featured in the small patch design and plenty of fun coordinates bring everything you need to make a pup-worthy project.



26935 E



26936 E

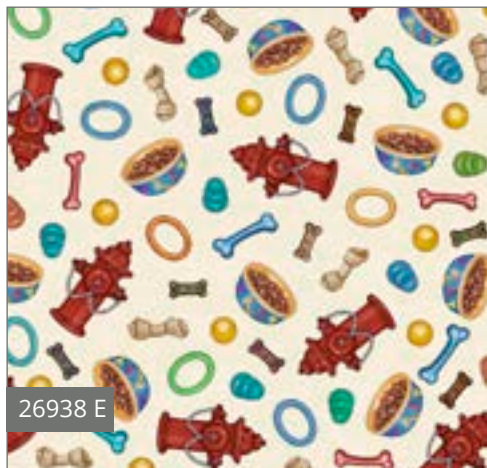
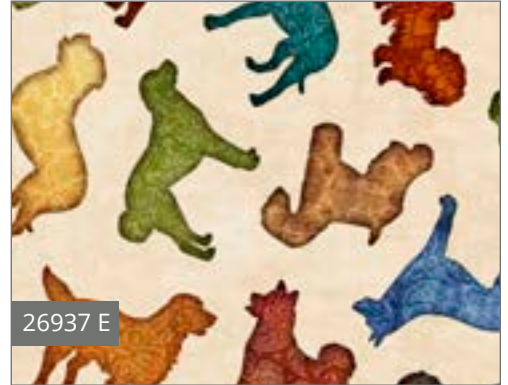
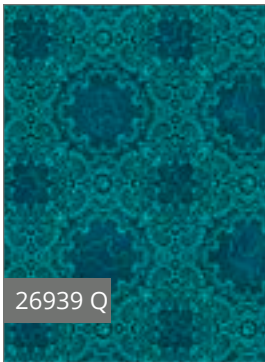
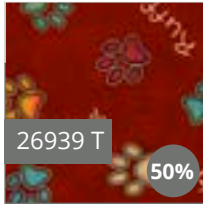


26936 J

December Delivery
6 Prints, 17 Color Combos



Inspired by Pattern:
Classic 48" Umbrella Frame/Pattern
from Umbrella Joan™



Pattern:
XL and Large Pop Ups
from The Fat Quarter Gypsy

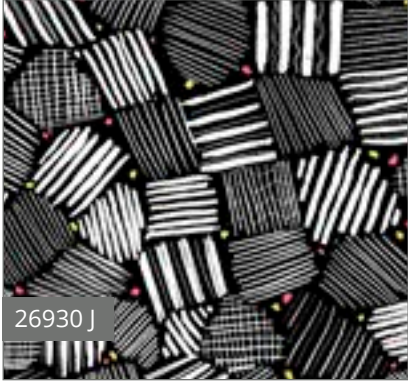
Dan Morris



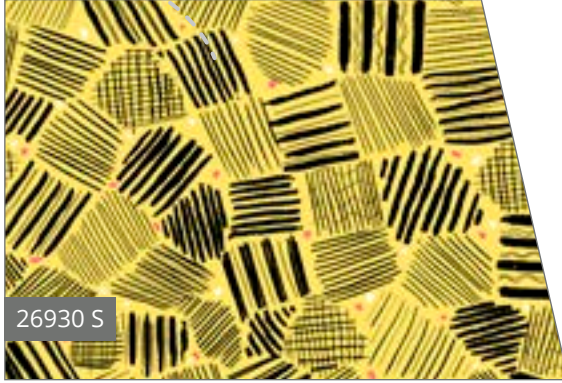
Nadine

Striking color and contrast for a garden of fashionable fabrics. Yellow, black, white and punches of coral bring drama to your next quilt! Textural effects bring sophistication to these avant garde prints with graphic influences. Embellish with French knots to add more texture and interest.

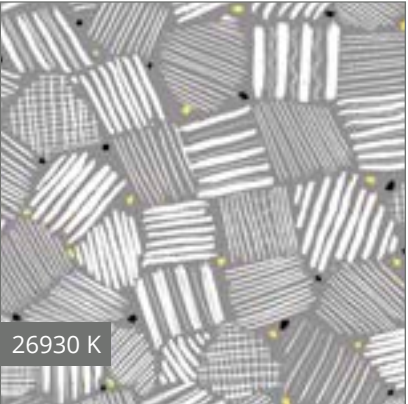




26930 J



26930 S



26930 K



26930 Z

Pattern: Marilyn Dress from Sew Serendipity



26929 J



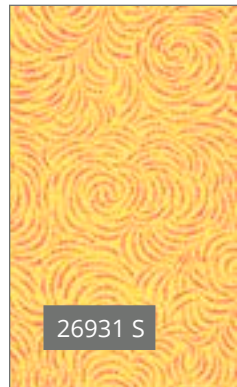
26929 Z



26931 K



26931 JP



26931 S



26931 JS

QT Studio



Party Like A Unicorn

Let's get rainbow bright with this super fun collection from ©Desiree,s Designs! You can make magical projects for your favorite unicorn dreamer, with great advice like dream big and sparkle for all to see! Fun fabrics with a rainbow of possibilities!



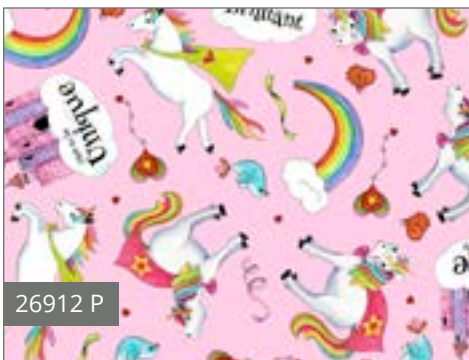
26909 P

Full panel Shown measures 24" x 44"

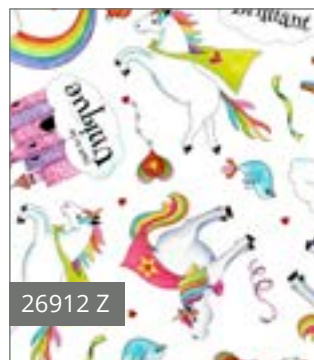


26910 X

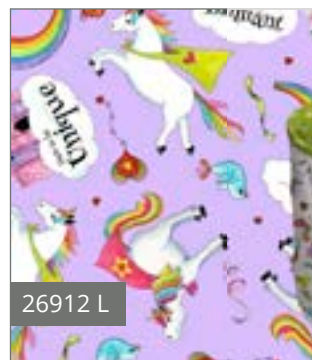
Shown at 17% scale



26912 P



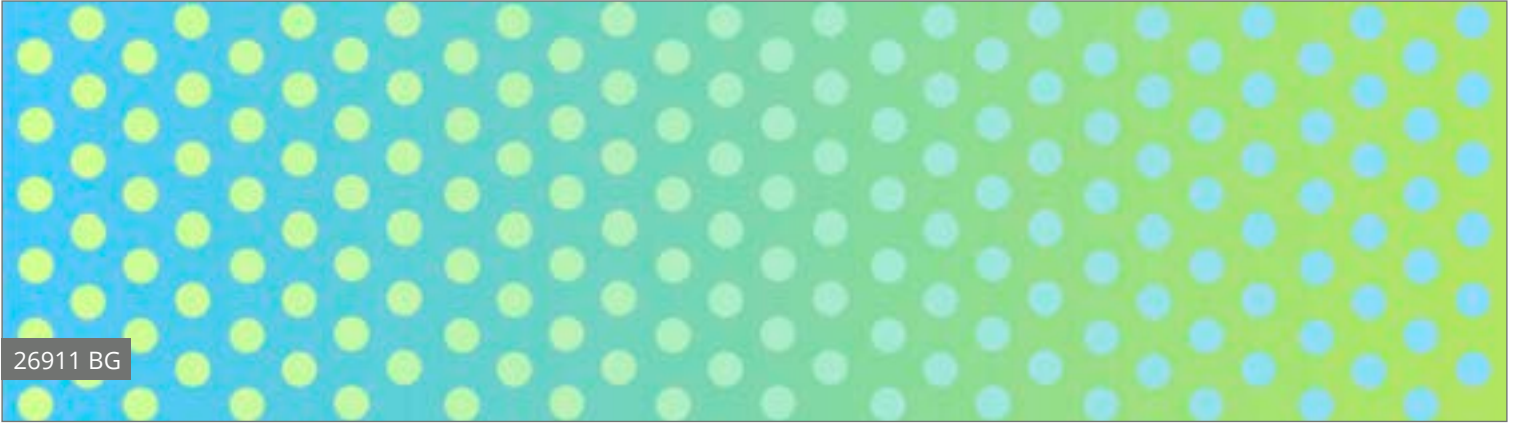
26912 Z



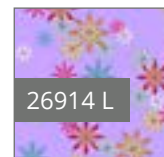
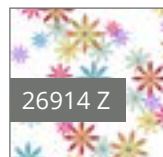
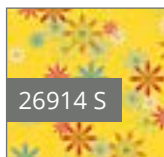
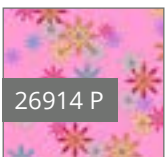
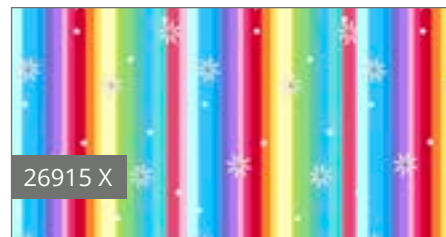
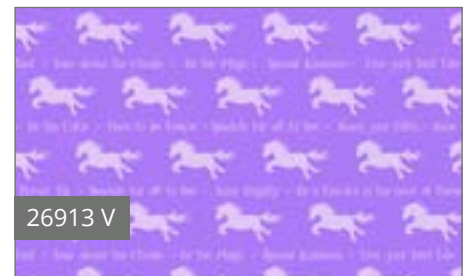
26912 L



Pattern:
Large & Extra Large
Stacking Pop-Ups from
The Fat Quarter Gypsy



Full panel Shown measures 12" x 44"



Desiree Habicht



SAFARI IN THE SKY

Let your quilts take flight with this wild and whimsical group from ©Turnowsky. Giraffes, Lions and Zebras... oh my, they love to fly! These characters pair well with the sweet cloud and sunshine prints and the great little geometric. Lots of fun possibilities to take your projects to new heights!



26963 B



26963 O



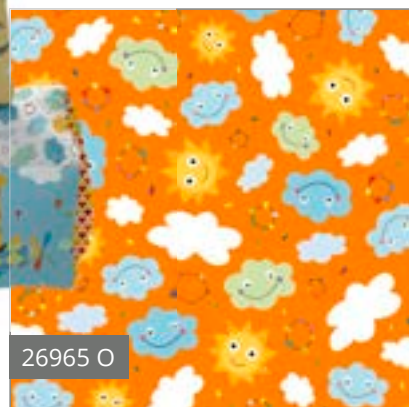
26965 B



26965 Z



Pattern: Baby Blocks from QT Fabrics



26965 O

Pattern:
Delight Quilt
from Jaybird Quilts



February Delivery
4 Prints, 10 Color Combos

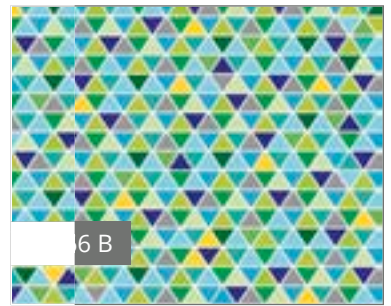
HOUSE of
TURNOWSKY
EST. 1940



26964 Q



6 B



26964 B

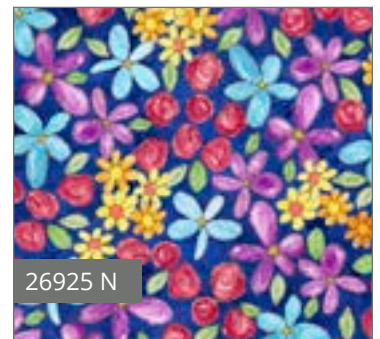
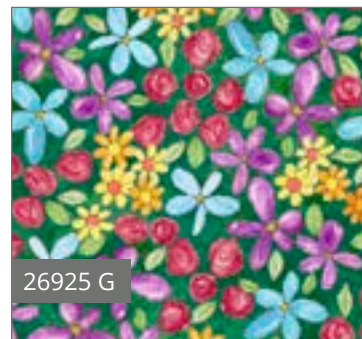
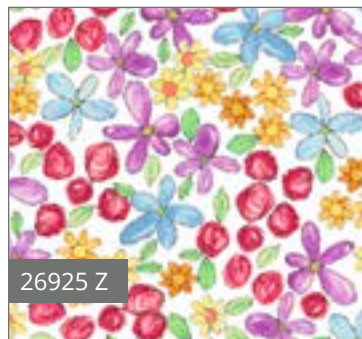
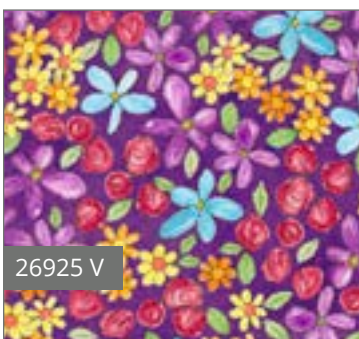
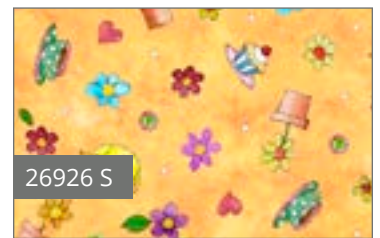
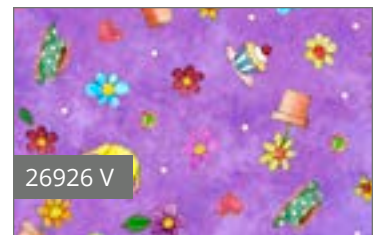


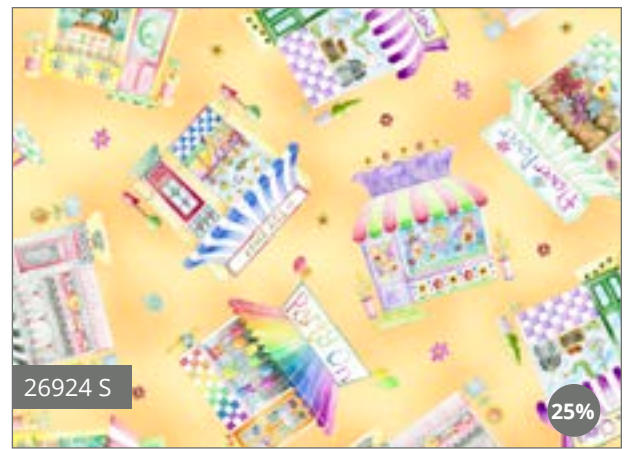
6 O

© House of Turnowsky
Designs shown at 50% scale unless otherwise noted

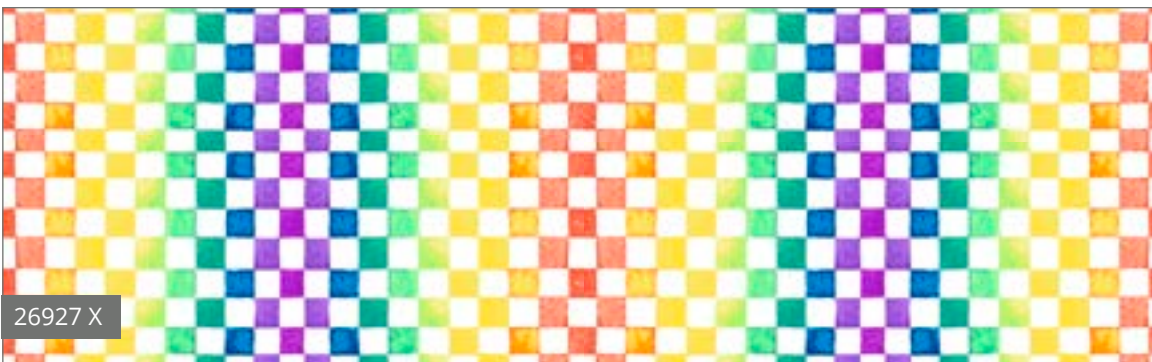
Shop Hop

A different kind of shop hop, these fabrics celebrate an afternoon of strolling down main street! Pretty florals, bright colors and a little retail therapy combine for a darling collection of fabrics by ©Victoria Whitlam for QT Fabrics.





Pattern:
Envelope Pillows from QT Fabrics



Victoria Whitlam

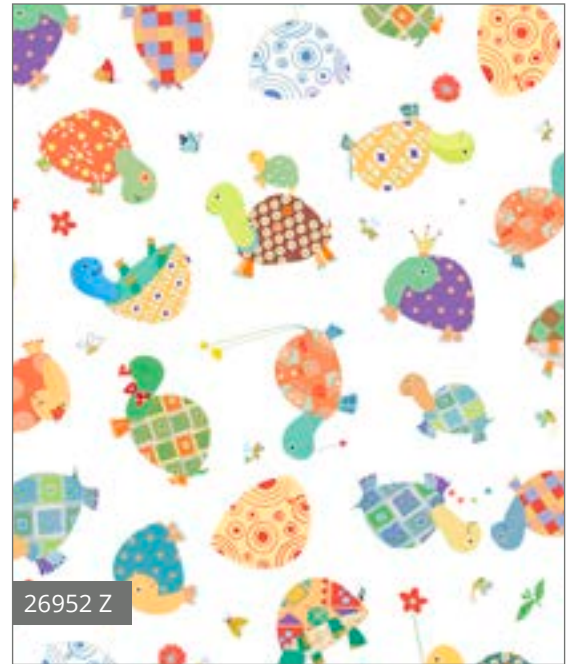


Slow Poke

Slow Poke features bright colors and whimsical turtles with friends. The geometric chevron, random dots and little cuties coordinate well for a fun project for your favorite little one! Another great collection brought to you by ©Turnowsky for QT Fabrics.



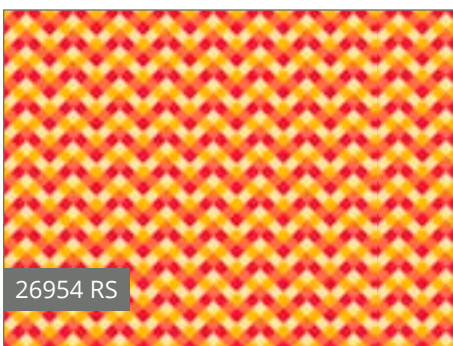
26952 N



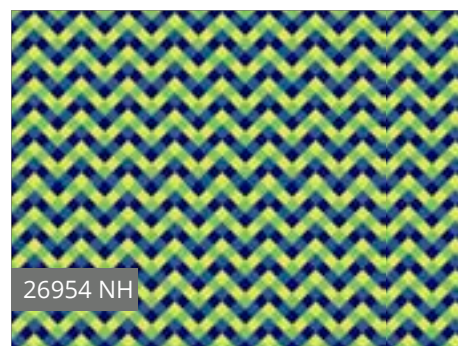
26952 Z



26952 Y



26954 RS

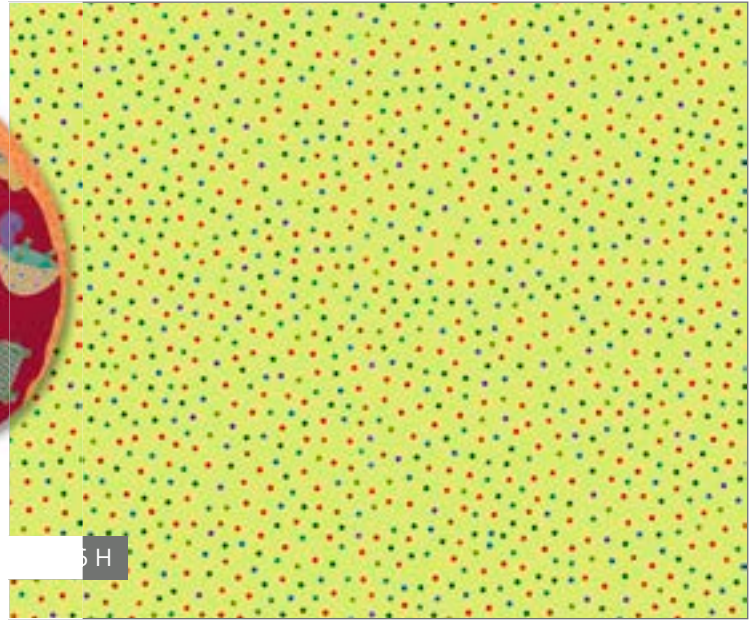


26954 NH

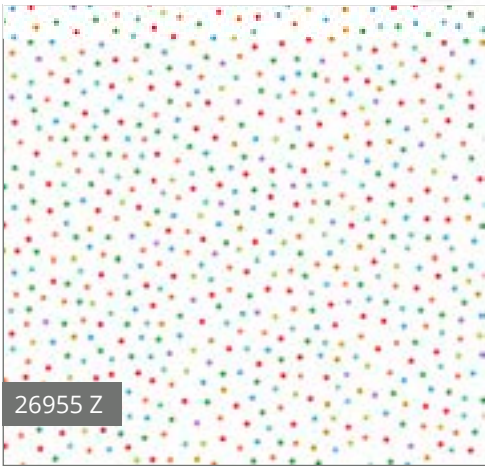


Pattern:
Ring Stacker Toy
from Pattern
Play Designs
- etsy.com

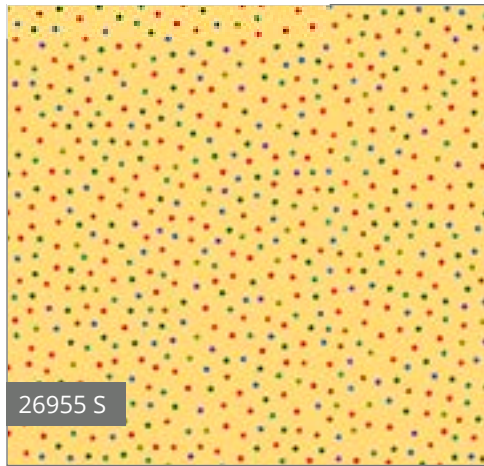
Pattern:
Three Ball Pattern
Purl of Soho



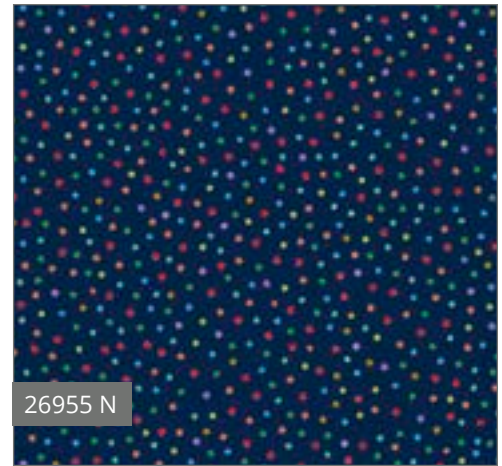
5 H



26955 Z



26955 S



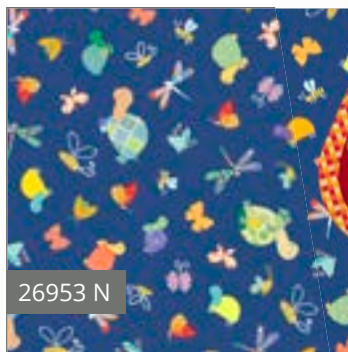
26955 N



26953 R



26953 Z

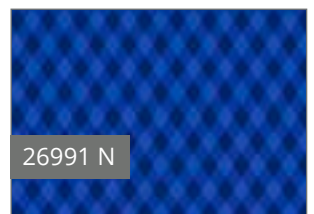
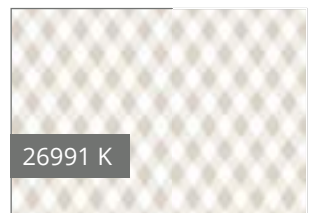
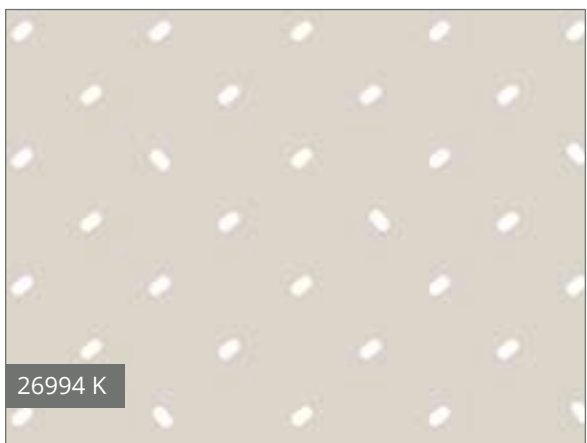
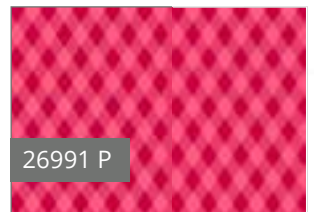
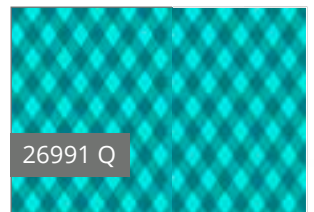
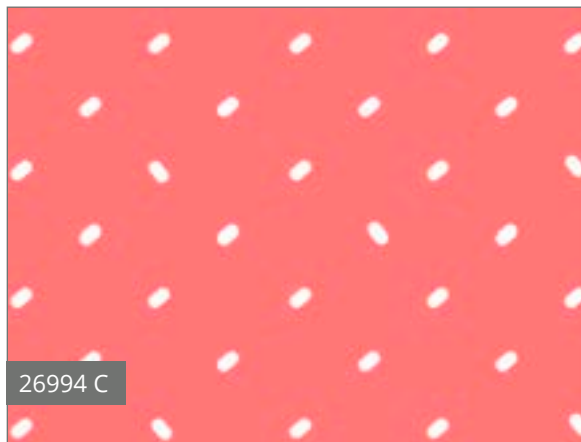
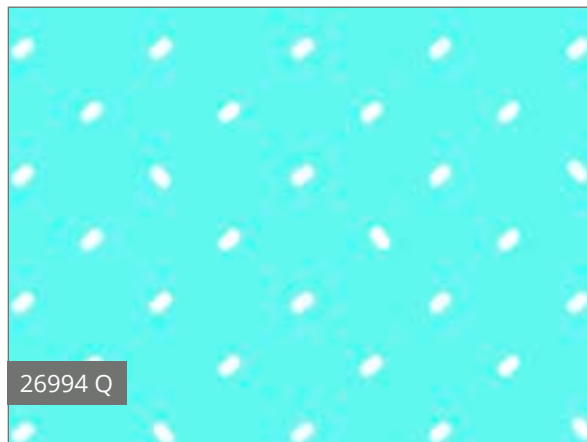


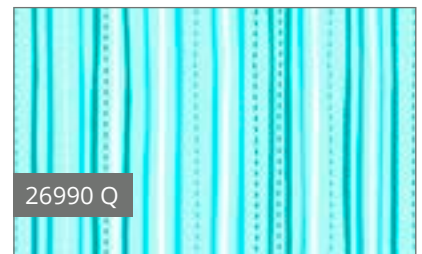
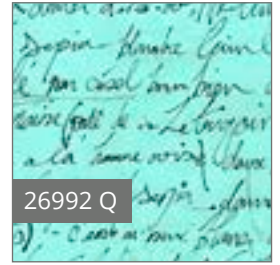
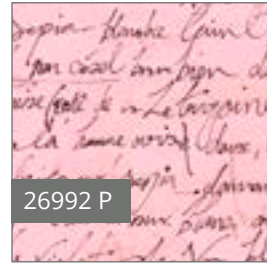
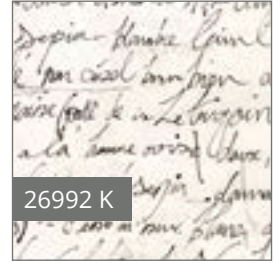
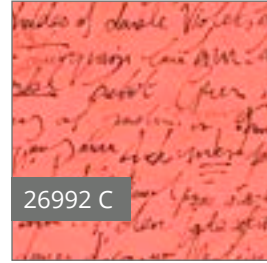
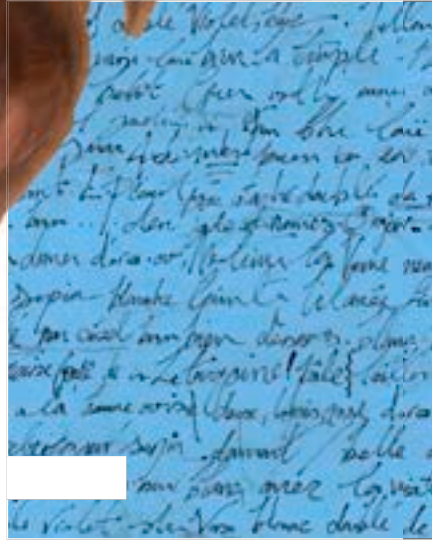
26953 N



Sweet Caroline

This wonderful curated collection by Caroline Critchfield of SewCanShe.com. epitomizes bright and cheery. We love her projects and inspiration, now see her spin on a well-rounded quilt collection for no-nonsense, perfectly coordinated fabrics! Pick your favorite colors and create with Sweet Caroline!





Pattern: Stella Dress Pattern from Izzy & Ivy Designs



Caroline
Critchfield



Sew & Go VII

Sew much you can do with these easy beginner panels. Dexter the Dinosaur is back with an alphabet book to add to your fabric library. We're also introducing a 36" panel which shows a map of the United States and the animals that live there. Finally we finish off the collection with a fun, fabric playmat that can be folded up and taken anywhere.



© Cynthia Fisher





26932 X

Full repeat shown measures 36" x 44"



Pattern: XL & L Pop Up Baskets
Fat Quarter Gypsy



26933 X

Full repeat shown measures approximately 36" x 44"



Happy Easter

Celebrate Easter with the mix of prints by ©Turnowsky for QT. The various prints work well together or as a stand-alone. Home décor, heirloom quilts, and darling dresses are all waiting to be sewn up with Happy Easter!



27059 P



27059 Q



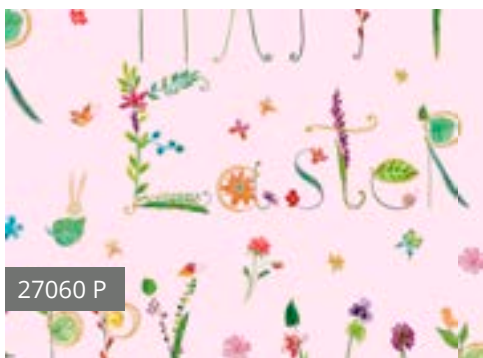
27059 V



27060 B



27060 S



27060 P



Pattern: Ava Tie Top
Izzy & Ivy Designs

January Delivery
4 Prints, 12 Color Combos

HOUSE of
TURNOWSKY
EST. 1940



27061 B



27061 G



27061 V



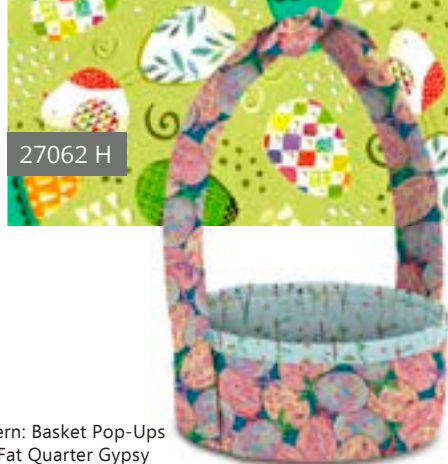
27062 Q



27062 H



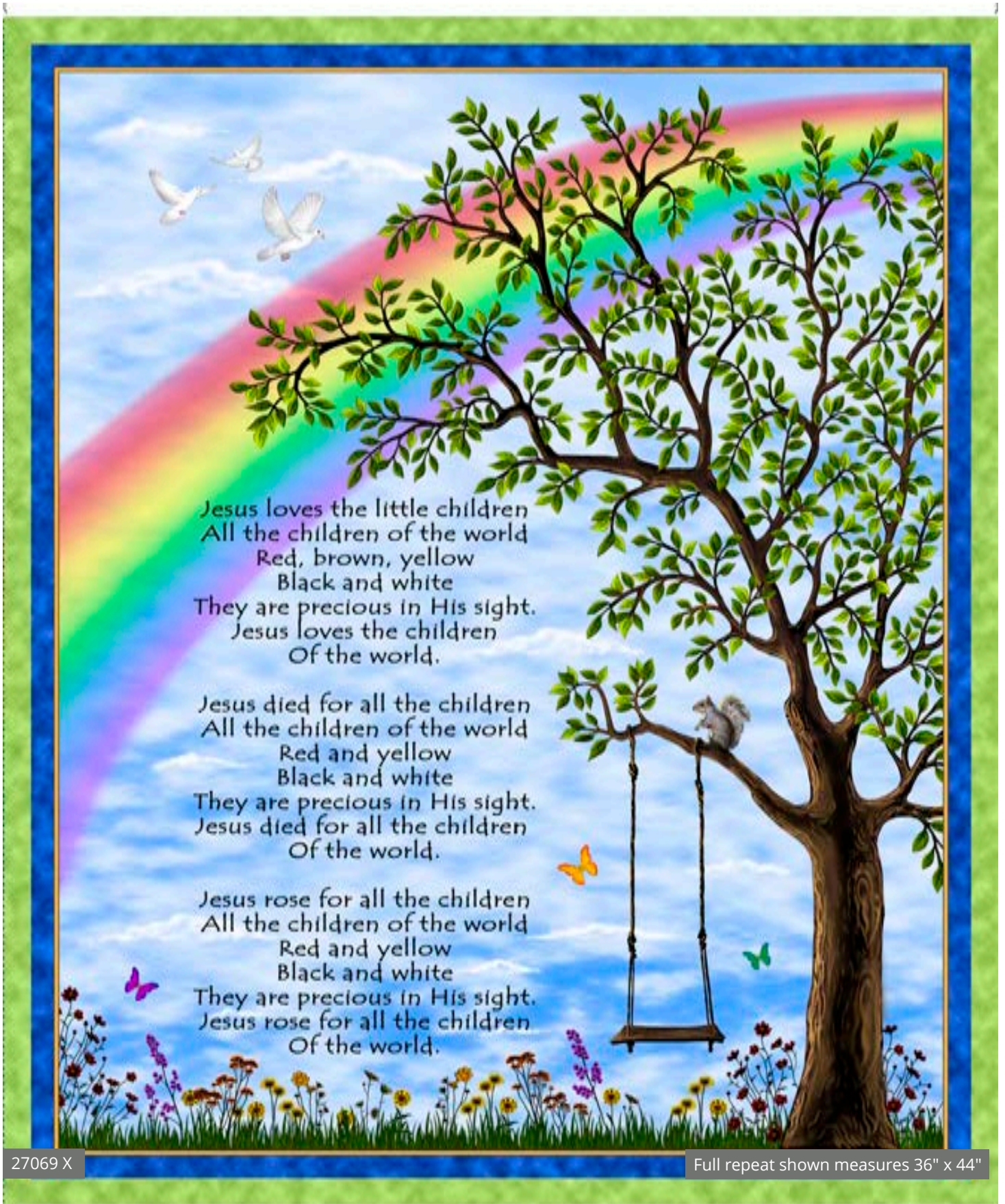
27062 P



Pattern: Basket Pop-Ups
The Fat Quarter Gypsy

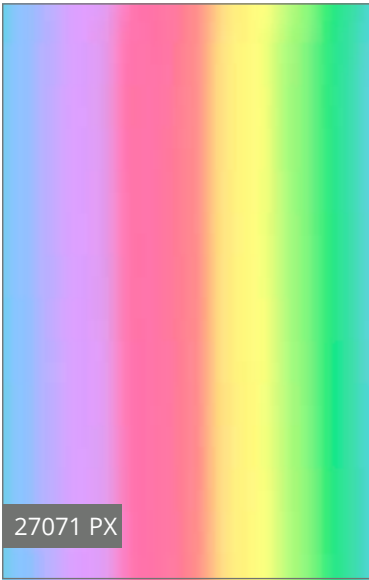
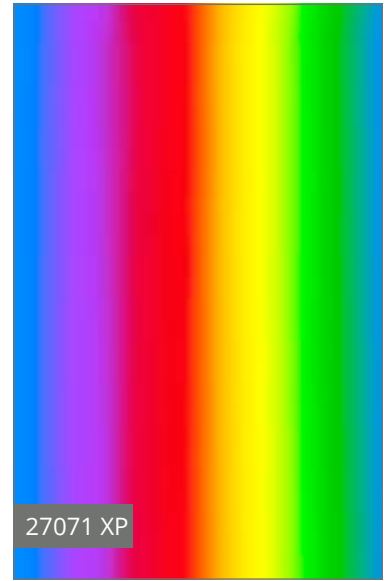
Jesus Loves the Little Children

Jesus Loves the Little Children is a hymn and nursery rhyme taught for generations in church. This panel fabric is well coordinated with bright and cheery prints to create a masterpiece of love and faith for your little one.



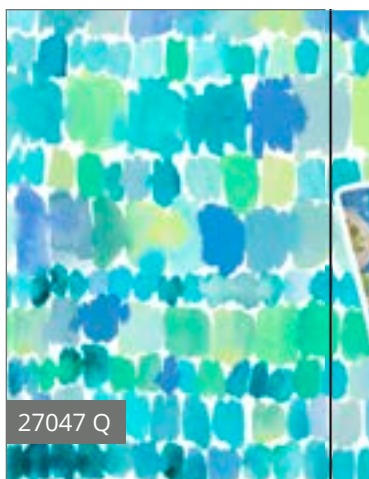
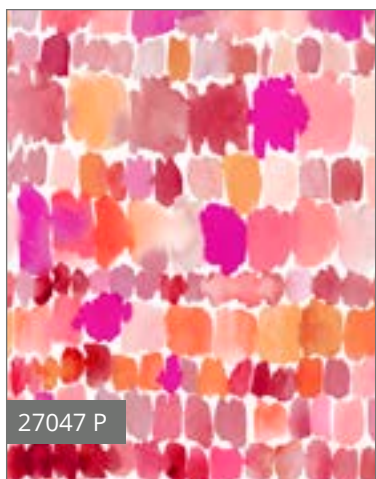
27069 X

Full repeat shown measures 36" x 44"



Wild & Fruity

Freshen up your next project with Wild & Fruity by ©Barbra Ignatiev for QT Fabrics. Watercolor prints are all-the-rage and these fruity delights do not disappoint! Great for anything from fashion accessories to home décor – go wild!



December Delivery
8 Prints, 11 Color Combos

BARBARIAN™



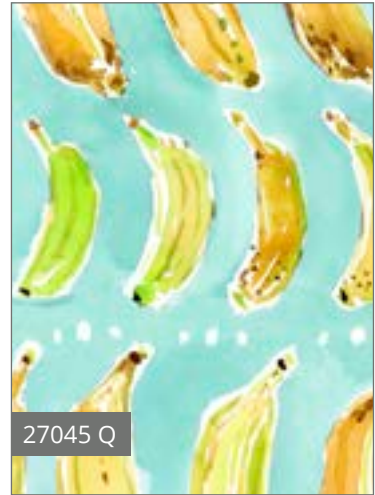
27043 H



27040 Q



27046 K



27045 Q



27042 Z

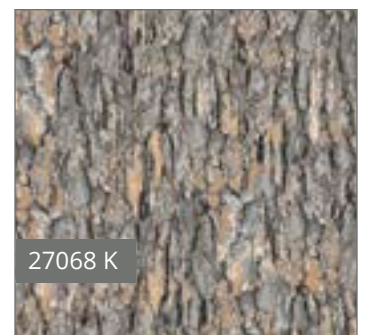
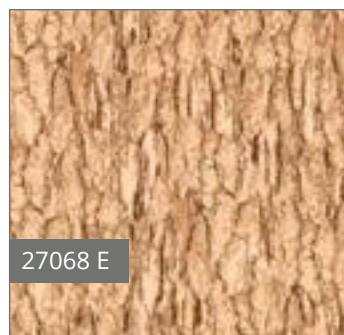
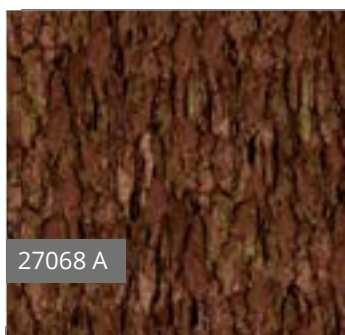


27044 B

Nocturnal Wonders

Barred owls and Great Horned Owls are beautifully featured in this crossover fabric collection from R&B Latham. The tree bark and feather prints coordinate well with both animals! These wise owls are native to different regions, have you seen them where you live?

Barred Owls



December Delivery
6 Prints, 9 Color Combos

R. & B. Latham



Great Horned Owls



27064 E

Full repeat shown measures 24" x 44"



27065 E

Pattern:
Claire Handbag
Lazy Girl Designs



27067 E

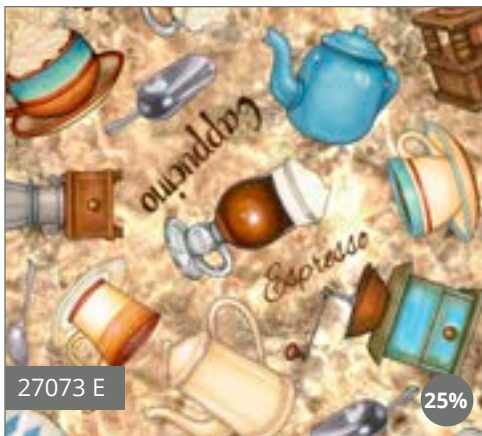
Café all Day

Perk up your home with these coffee themed prints by ©Dan Morris for QT. There are so many combinations of fabrics to play with, you'll be sure to caffeinate a fabulous project! Patches, allovers and a fun coffee bean design will be just what you need to wake up and sew!



27072 E

27072 J



27073 E

25%



27073 J

25%



27073 T

25%



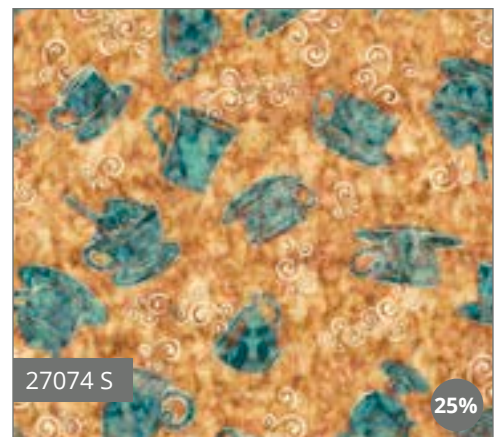
27074 A

25%



27074 Q

25%

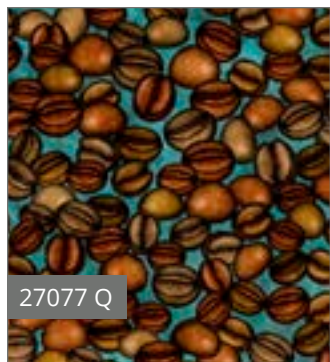
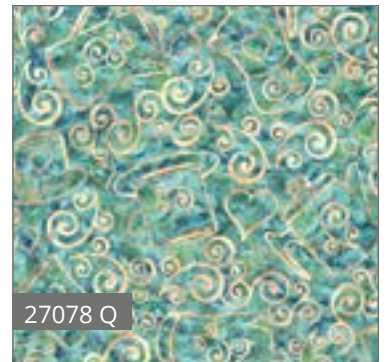
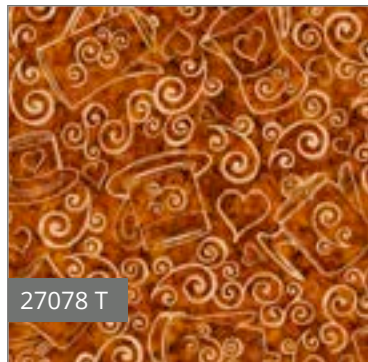
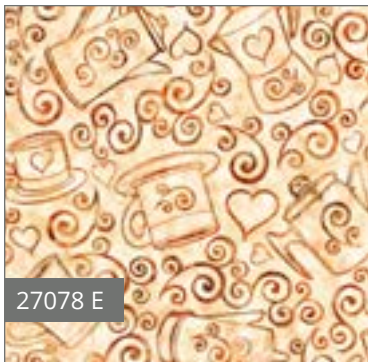
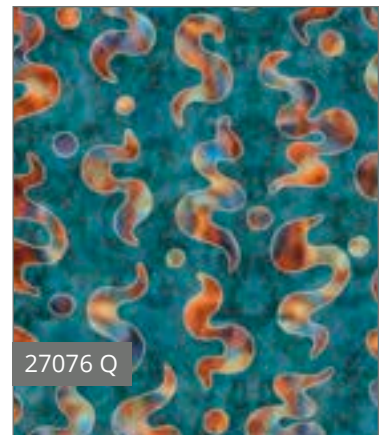
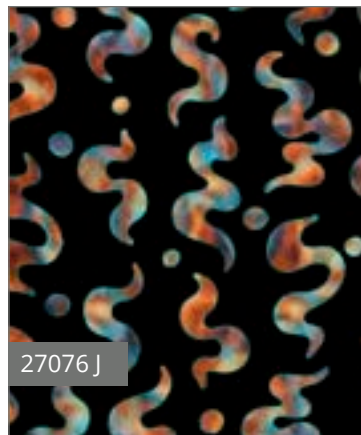
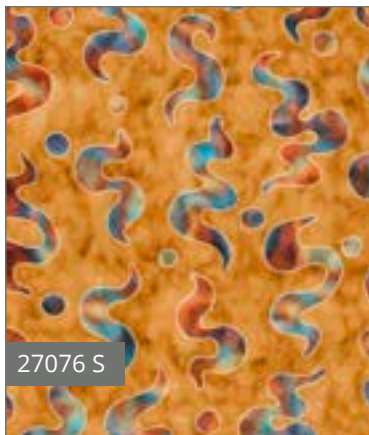


27074 S

25%



January Delivery
7 Prints, 19 Color Combos



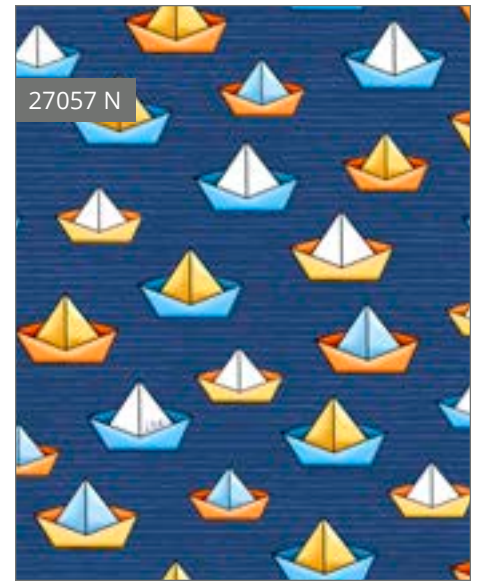
Dan Morris



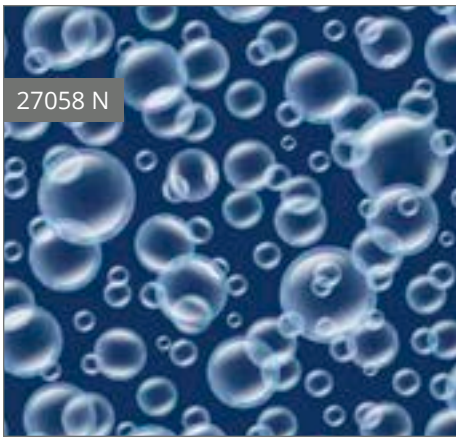
© Dan Morris Designs
Designs shown at 50% scale unless otherwise noted

Quackers

Darling duckies delight with bubbles and paper sailboats. With a strong trend palette of navy blues with crisp whites, coupled with the bright yellow, these duckies will shine in any project. For the young, or young at heart, look for the little hidden icon in every print!



January Delivery
3 Prints, 10 Color Combos



Inspired by Pattern:
Classic 48" Umbrella Frame/Pattern
from Umbrella Joan™



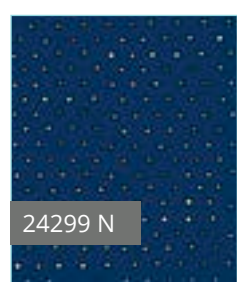
look for us
in every print



Pattern: Giggle Quilt
from Jaybird Quilts



Pattern: Slicker Tote
from Lazy Girl Designs
* Laminate your own fabric!



QT Studio



Adeline



FS

57" x 67"
Designed by Heidi Pridemore

Adeline



57" x 67"
Designed by Wendy Sheppard

Armour de Fleur



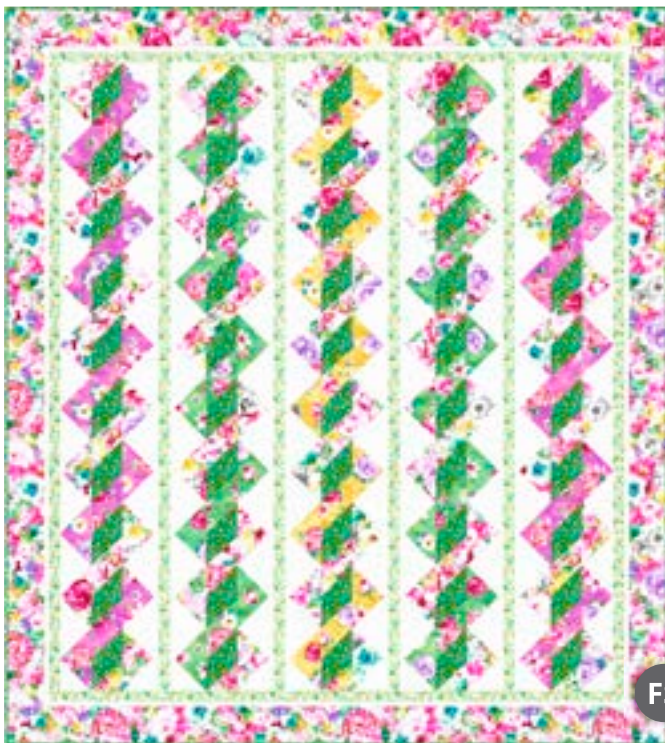
QT

58" x 73"
Designed by Wendy Sheppard

55" x 25"
Runner

15" x 15"
Pillow

Annabelle



FS

63" x 70"
Designed by Sue Harvey & Sandy Boobar of Pine Tree Country Quilts

Artworks - Angel & Peacock



FS

57" x 70¼"
Designed by Pine Tree Country Quilts

Artworks - Twilight Cast



54" x 53"
Designed by Pine Tree Country Quilts

Artworks - Moose & Bear



38" x 49¼"
Designed by Pine Tree Country Quilts

Bohemian Rhapsody



62¼" x 81"
Designed by Pine Tree Country Quilts

Café All Day



Wall Quilt: 36" x 36"
Mats: 14" x 9"
Designed by Pine Tree Country Quilts

Crazy for Crafting



31" x 55"
Designed by Pine Tree Country Quilts

Delilah



Throw measures: 69" x 80"

Doll Quilt measures: 16" x 21"

Designed by Sue Harvey & Sandy Boobar

FS

Fancy Felines



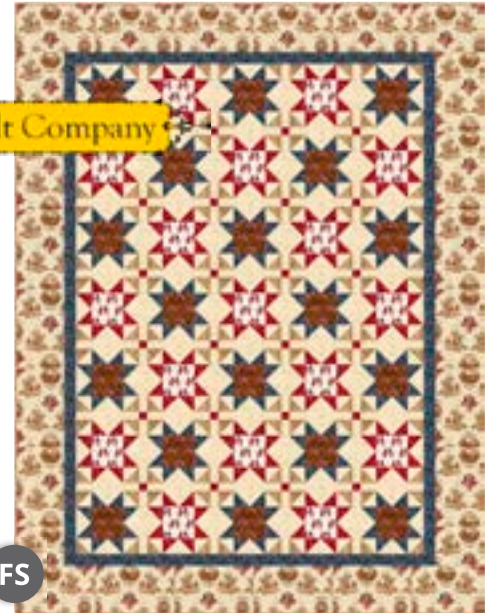
58" x 58"

Designed by Franklin Quilt Company

FS

FS

Gettysburg



60" x 78"

Designed by Franklin Quilt Company

Jesus Loves The Little Children



51" x 58"

Designed by QT Fabrics

QT

Mirage



73" x 73"

Designed by Heidi Pridemore and The Whimsical Workshop

FS

Must Love Dogs



45½" x 55½"

Designed by Deb Finan

QT

Nadine



63" x 77"

Designed by Sue Harvey & Sandy Boobar

Nocturnal Wonders

Great Horned Owls



45½" x 50½"

Designed by Sue Harvey & Sandy Boobar

Nocturnal Wonders

Barred Owls



42½" x 42½"

Designed by Sue Harvey & Sandy Boobar

Party Like A Unicorn



53½" x 61½"

Designed by Wendy Sheppard

Quackers



44" x 44"

Designed by QT Fabrics

Safari In The Sky



51" x 60"
Designed by Sue Harvey & Sandy Boobar

FS

Sew N' Go - Map



57" x 77"
Designed by Deb Finan

Sew N' Go
Playmat

47 $\frac{3}{4}$ " x 40 $\frac{3}{4}$ "
Designed by Deb Finan

QT

Shop Hop



73" x 88"
Designed by Wendy Sheppard

QT

Slow Poke



54" x 54"
Designed by Sue Harvey & Sandy Boobar

FS

We've created many exciting partnerships with pattern designers to bring you top quality inspiration using QT Fabrics.

PROJECTS

Sweet Caroline - Basket Tote



QT

Finished dimensions:
approximately 16" wide at the top and 11" tall
Designed by Caroline Critchfield

Annabelle - Miranda Day Bag



FS

Finished dimensions:
approximately 12" x 10" x 6"
Designed by Lazy Girl Designs

Sweet Caroline - Kisses Quilt



QT

56½" x 68"
Designed by Caroline Critchfield

Delilah - Lily Pocket Purse



FS

Finished dimensions: –
approximately 9" x 10¼" x 1"
Designed by Lazy Girl Designs

Mirage - Bacchus Bag



FS

Finished dimensions:
approximately 19" x 12" x 7"
Designed by Wives of Whitewood

Wild & Fruity - Throw & Runner



FS

Throw: 50" x 63" - Runner: 19" x 43"
Designed by Sue Harvey & Sandy Boobar

Harmony - Kaleidoscope



FS

62" x 80"
Designed by Reed Johnson for Blue Bear Quilts



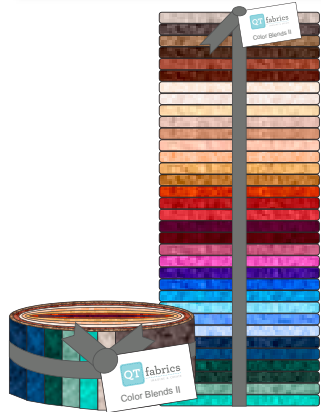
Color your Quilt Shop
with QT Basics!

Color Blends II

SKU 23528

100% Cotton. 43/44"
60 x 60. D/R approx. 12 yds

All designs shown at 100%.



(34) Fat Quarters
Color Blends II
FATQUAR CBII 3 PACK

(34) 2½" Strips
Color Blends II
STRIPS CBII 6PACK



KE (Dove)



JK (Pewter)



AX (Tobacco)



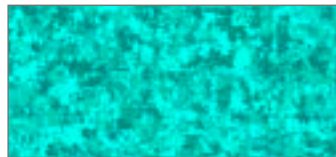
AT (Bark)



TC (Spice)



TA (Rust)



GQ (Jadeite)



HQ (Cyprus)



FQ (Fir)



MT (Brick)



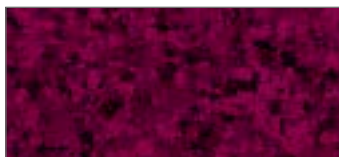
GJ (Juniper)



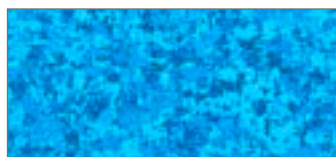
BY (Liberty Blue)



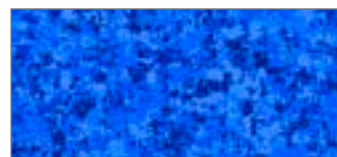
NW (Navy)



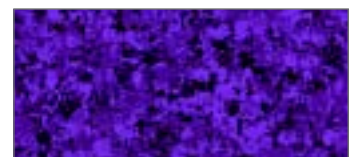
VM (Mulberry)



BQ (Cyan)



YW (Ultramarine)



VK (African Violet)



DM (Raspberry)



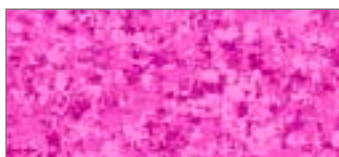
WX (Ice Blue)



WB (French Blue)



BX (Glacier Blue)



PL (Cyclamen)



O (Vermilion)



RO (Tomato)



RD (Geranium)



AD (Mocha)



EZ (Oatmeal)



EK (Bisque)



ES (Parchment)



AC (Acorn)



C (Cinnamon Sugar)



OZ (Apricot)



S (Butterscotch)



SU (Gold Nugget)

Color Blends

SKU 23528

100% Cotton. 43/44"
60 x 60. D/R approx. 12 yds.



EA (Vanilla)



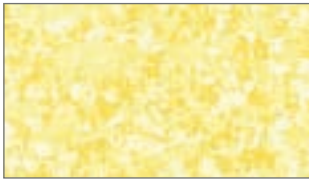
E (Sand)



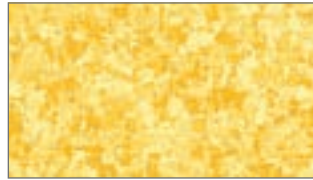
AE (Camel)



AK (Taupe)



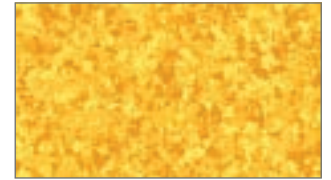
SE (Buttercream)



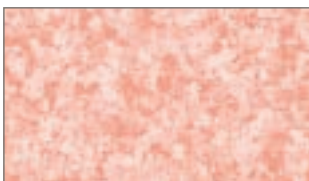
SZ (Daffodil)



SK (Antique Gold)



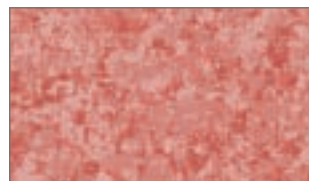
ST (Sunflower)



CZ (Shrimp)



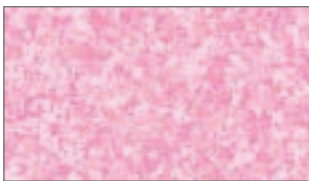
CO (Coral)



D (Dusty Rose)



RA (Azalea)



PZ (Cotton Candy)



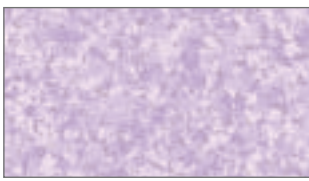
P (Wild Rose)



PV (Fuchsia)



PM (Magenta)



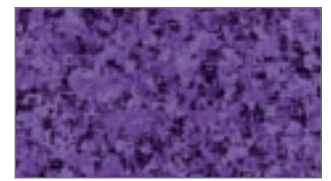
LE (Iris)



L (Wisteria)



VL (Hyacinth)



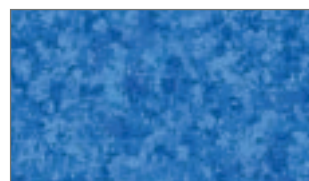
VJ (Grape)



BE (Sky Blue)



B (Crystal Blue)



YZ (Ultra Blue)



BW (Rich Royal)



BZ (Chambray)



QK (Slate Blue)



QE (Ocean)



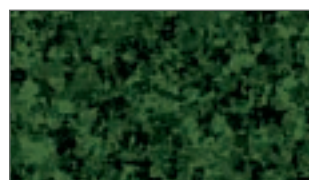
Q (Turquoise Mist)



HG (Kelly Green)



G (Leaf Green)



FJ (Evergreen)



HE (Celadon)

All designs shown at 100%

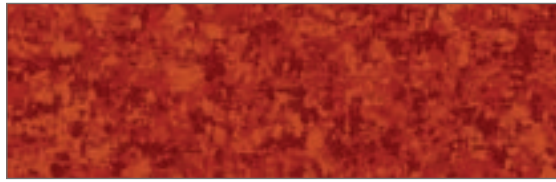
In-Stock Fabrics



A (Nutmeg)



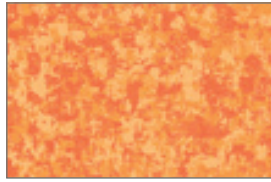
AJ (Warm Brown)



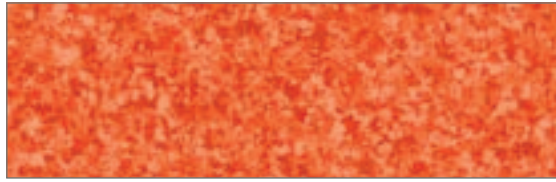
T (Paprika)



SA (Amber)



OS (Carrot)



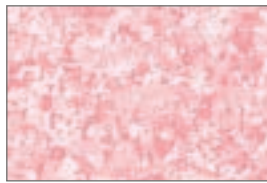
OT (Fiesta Orange)



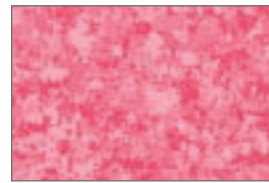
R (Red)



MR (Sangria)



PD (Peony)



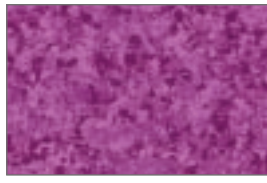
PR (Strawberry Pink)



MJ (Garnet)



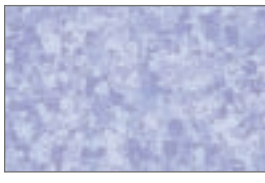
VD (Orchid)



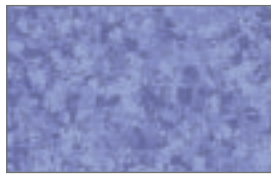
VP (Dark Orchid)



V (Plum)



LZ (Light Periwinkle)



LB (Periwinkle)



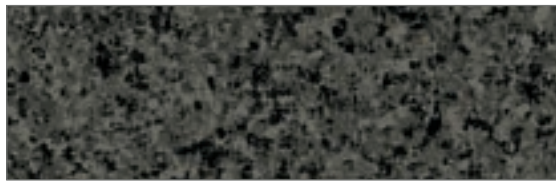
KZ (Ash)



N (Indigo)



K (Graphite)



KJ (Charcoal)



QB (Turquoise)



QZ (Seafoam)



QH (Jade)



GF (Spruce)



HZ (Lime)



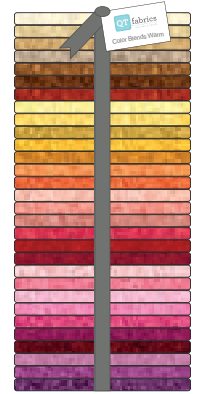
HS (Pistachio)



GH (Olive)



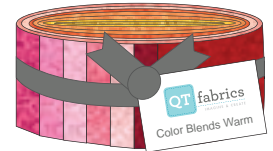
F (Avocado)



WARM

(30) Fat Quarters
Color Blends

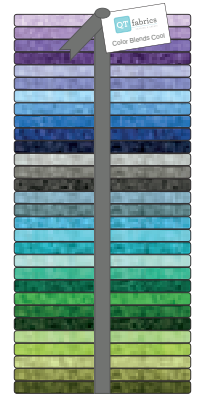
FATQUAR CBWARM 3PACK



WARM

(30) 2½" Strips
Color Blends

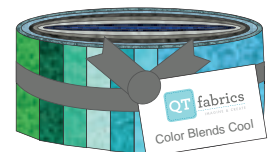
STRIPS CBWARM 6PACK



COOL

(30) Fat Quarters
Color Blends

FATQUAR CBCOOL 3PACK



COOL

(30) 2½" Strips
Color Blends

STRIPS CBCOOL 6PACK

Avalon 108" Wide
SKU 26312

100% Cotton. 108"
60 x 60. D/R approx. 18 yds

All designs shown at 50%.



Full repeat shown of 26312 O at 50% - Full repeat measures approx. 12" x 12"



Q (Turquoise)



S (Gold)



T (Rust)



A (Brown)



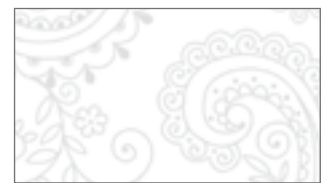
B (Blue)



O (Orange)



AE (Tan)



Z (White)



W (Midnight)



R (Red)



E (Cream)



K (Gray)



H (Lime)



G (Green)



P (Pink)



V (Purple)

Ombre Scrolls 108" Wide
SKU 24174

100% Cotton. 108"
60 x 60. D/R approx. 18 yds.

All designs shown at 100%

In-Stock Fabrics



M (Ruby)



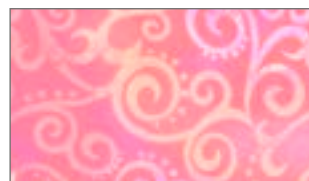
N (Navy)



V (Grape)



PV (Hot Pink)



P (Pink)



O (Tangerine)



F (Forest)



GF (Kelly)



H (Lime)



S (Lemon)



J (Black)



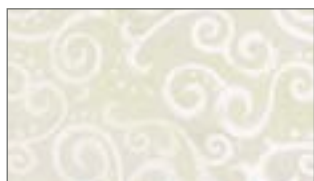
Q (Marine)



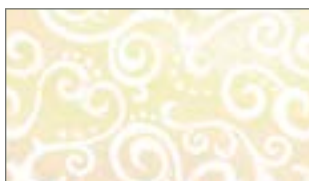
Y (Royal)



K (Stone)



KZ (Crystal)



E (Ecru)



A (Sable)

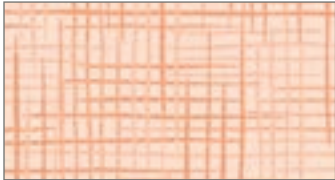


AT (Root Beer)

Harmony Brights

100% Cotton Flat or Double Brushed Flannel (FLN), 42/43"
60 x 60. D/R approx. 12 yds

All designs shown at 100%.



24776 O/OFLN (Melon)



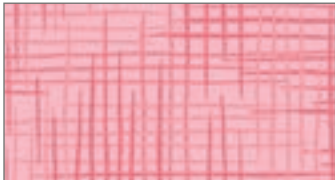
24777 O/OFLN (Apricot)



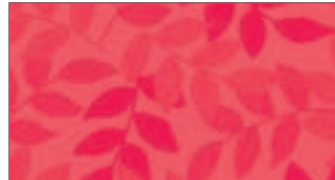
24778 O/OFLN (Tangerine)



24779 O/OFLN (Carrot)



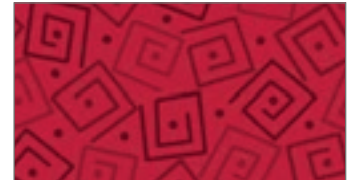
24776 CR/CRFLN (Peony)



24777 CR/CRFLN (Geranium)



24778 R/RFLN (Red)



24779 R/RFLN (Crimson)



24776 L/LFLN (Lilac)



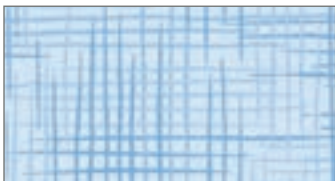
24777 L/LFLN (Crocus)



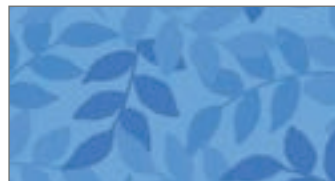
24778 V/VFLN (Pansy)



24779 V/VFLN (Grape)



24776 B/BFLN (Powder Blue)



24777 BY/BYFLN (Blue Aster)



24778 Y/YFLN (Sapphire)



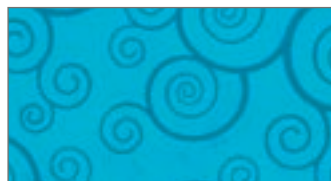
24779 Y/YFLN (Royal)



24776 Q/QFLN (Turquoise Blue)



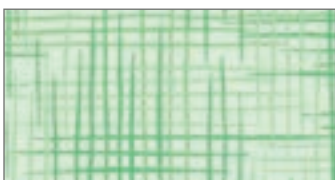
24777 Q/QFLN (Turquoise)



24778 Q/QFLN (Marine)



24779 Q/QFLN (Deep Ocean)



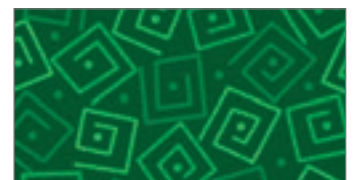
24776 G/GFLN (Green Mist)



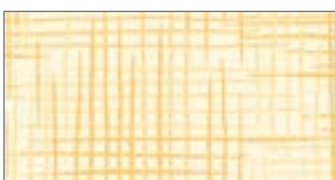
24777 G/GFLN (Spring Green)



24778 G/GFLN (Shamrock)



24779 G/GFLN (Jungle Green)



24776 S/SFLN (Buttercream)



24777 S/SFLN (Daffodil)



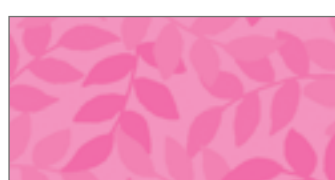
24778 S/SFLN (Sunflower)



24779 S/SFLN (Marigold)



24776 P/PFLN (Cotton Candy)



24777 P/PFLN (Party Pink)



24778 P/PFLN (Bubble Gum)



24779 P/PFLN (Azalea)

Harmony Home Dec

100% Cotton Flat or Double Brushed Flannel. 42/43"
60 x 60. D/R approx. 12 yds.

All designs shown at 100%.



24776 SA/SAFLN (Maize)



24777 SA/SAFLN (Cornsilk)



24778 SA/SAFLN (Honey)



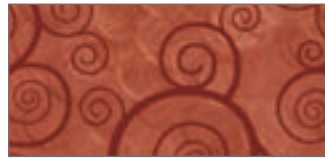
24779 SA/SAFLN (Amber)



24776 C/CFLN (Clay)



24777 C/CFLN (Nutmeg)



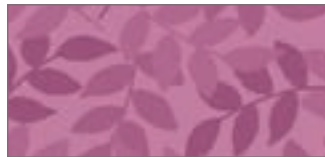
24778 T/TFLN (Terracotta)



24779 T/TFLN (Rust)



24776 VM/VMFLN (Heather)



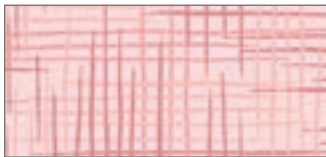
24777 VM/VMFLN (Plum Rose)



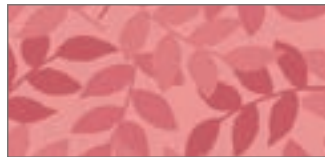
24778 VM/VMFLN (Plum Velvet)



24779 VM/VMFLN (Plum)



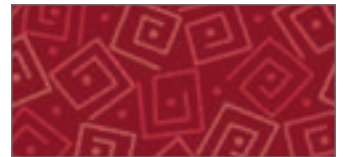
24776 D/DFLN (Ash Rose)



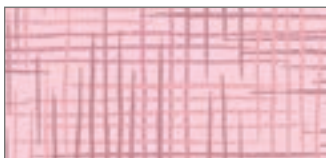
24777 D/DFLN (Dusty Rose)



24778 RT/RTFLN (Paprika)



24779 RT/RTFLN (Brick)



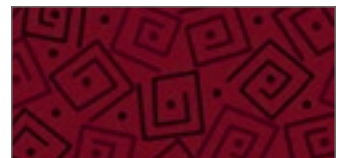
24776 DM/DMFLN (Mauve)



24777 DM/DMFLN (Mulberry)



24778 DM/DMFLN (Sangria)



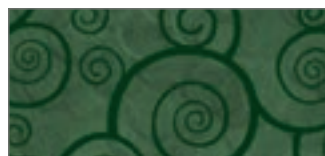
24779 M/MFLN (Garnet)



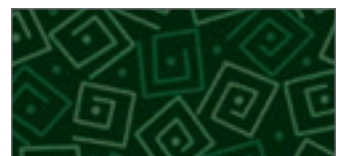
24776 H/HFLN (Frosted Pine)



24777 H/HFLN (Spruce)



24778 F/FFLN (Evergreen)



24779 F/FFLN (Forest)



24776 GF/GFFLN (Silver Sage)



24777 GF/GFFLN (Sage)



24778 GF/GFFLN (Moss)



24779 GF/GFFLN (Olive)



24776 W/WFLN (Arctic Blue)



24777 W/WFLN (Denim)



24778 W/WFLN (Slate Blue)



24779 N/NFLN (Navy)



24776 QB/QBFLN (Blue Lagoon)



24777 QB/QBFLN (Chambray)



24778 QB/QBFLN (Teal)

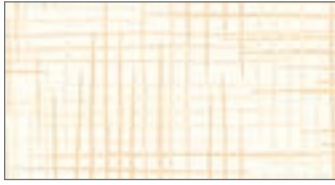


24779 QB/QBFLN (Prussian Blue)

Harmony Neutrals/Baby

100% Cotton Flat or Double Brushed Flannel (FLN). 42/43"
60 x 60. D/R approx. 12 yds

All designs shown at 100%.



24776 E/EFLN (Vanilla)



24777 E/EFLN (Sand)



24778 EA/EAFNL (Camel)



24779 EA/EAFNL (Toffee)



24776 K/KFLN (Ash)



24777 K/KFLN (Graphite)



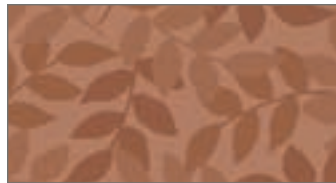
24778 K/KFLN (Charcoal)



24779 J/JFLN (Black)



24776 A/AFLN (Wheat)



24777 A/AFLN (Toast)

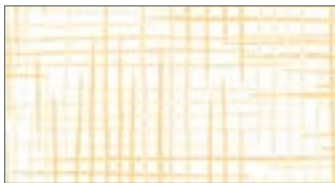


24778 A/AFLN (Sable)

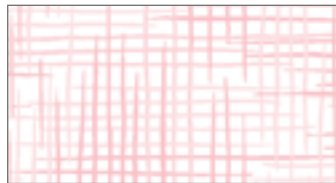


24779 A/AFLN (Espresso)

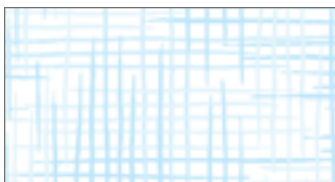
Baby



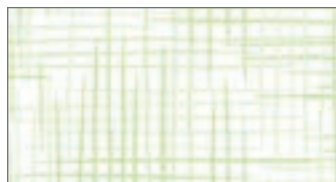
24776 ZS/ZSFLN (Butter)



24776 ZP/ZPFLN (Powder Pink)



24776 ZB/ZBFLN (Cloud Blue)



24776 ZH/ZHFLN (Soft Green)

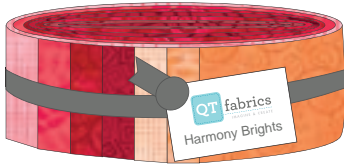


All designs shown at 100%

In-Stock Fabrics



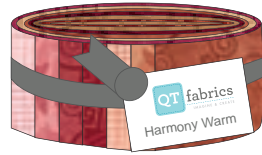
All Harmony Pre-Cuts available in flat cotton or flannel 2½" Strip Sets



Harmony Brights #1
36 SKUs / 40 Strips

(40) 2½" Strips
Harmony Brights

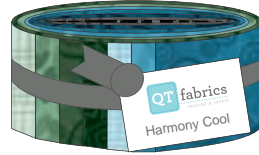
STRIPS HARMCO 6PK01
STRIPS HARMFL 6PK01



Harmony Warm (24) #2

(24) 2½" Strips
Harmony Warm

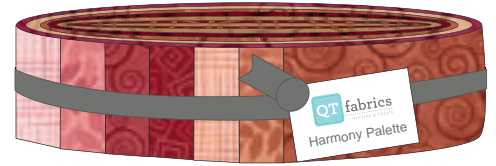
STRIPS HARMCO 6PK02
STRIPS HARMFL 6PK02



Harmony Cool (24) #3

(24) 2½" Strips
Harmony Cool

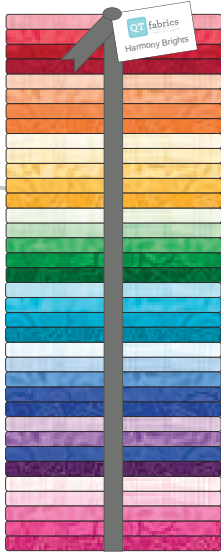
STRIPS HARMCO 6PK03
STRIPS HARMFL 6PK03



Harmony Palette (48) #4
Includes Harmony Cool & Warm

(48) 2½" Strips
Harmony Palette

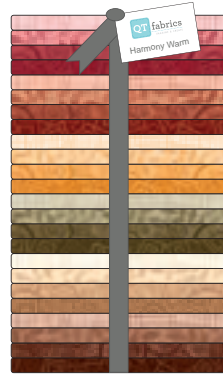
STRIPS HARMCO 6PK04
STRIPS HARMFL 6PK04



Harmony Brights (36) #1

(36) Fat Quarters
Harmony Brights

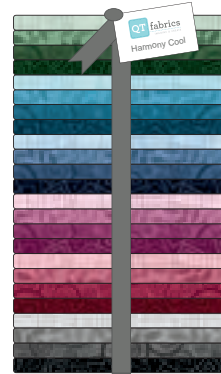
FATQUAR HARMCO 3PKLG1
FATQUAR HARMFL 3PKLG1



Harmony Warm (24) #2

(24) Fat Quarters
Harmony Warm

FATQUAR HARMCO 3PKLG2
FATQUAR HARMFL 3PKLG2



Harmony Cool (24) #3

(24) Fat Quarters
Harmony Cool

FATQUAR HARMCO 3PKLG3
FATQUAR HARMFL 3PKLG3

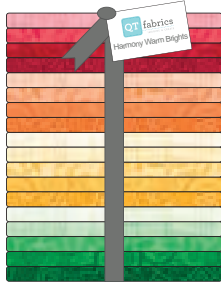


Harmony Combo Set (84) #3
Includes sets 1, 2 & 3

(84) Fat Quarters
Harmony Combo Set

FATQUAR HARMCO 3PKLG4
FATQUAR HARMFL 3PKLG4

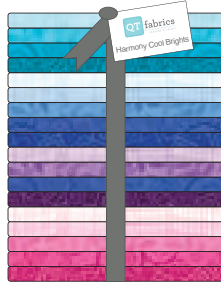
Fat Quarter Small Sets



Harmony Warm Brights (18) #1

(18) Fat Quarters
Harmony Warm Brights

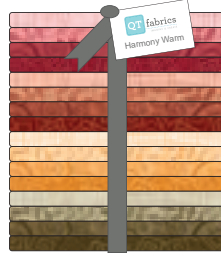
FATQUAR HARMCO 3PKSM1
FATQUAR HARMFL 3PKSM1



Harmony Cool Brights (18) #2

(18) Fat Quarters
Harmony Cool Brights

FATQUAR HARMCO 3PKSM2
FATQUAR HARMFL 3PKSM2



Harmony Warm (16) #3

(16) Fat Quarters
Harmony Warm

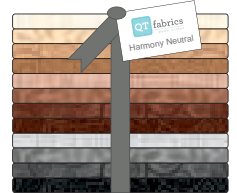
FATQUAR HARMCO 3PKSM3
FATQUAR HARMFL 3PKSM3



Harmony Cool (20) #4

(20) Fat Quarters
Harmony Cool

FATQUAR HARMCO 3PKSM4
FATQUAR HARMFL 3PKSM4



Harmony Neutral (12) #5

(12) Fat Quarters
Harmony Neutral

FATQUAR HARMCO 3PKSM5
FATQUAR HARMFL 3PKSM5

Illusions

100% Cotton. 43/44"
60 x 60. D/R approx. 12 yds.

Crisp Whites White/White



21516 Z Stencil Floral



24600 Z Snowflake



21517 Z Curly Cue



21519 Z Paisley



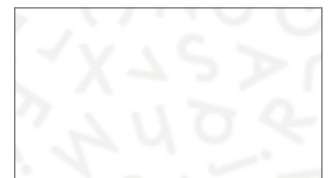
21523 Z Stars



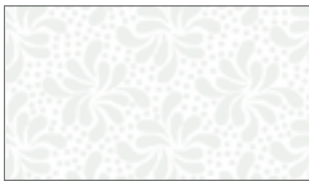
23540 Z Stars



23541 Z Scribble



26760 Z Alphabets



21518 Z Pinwheel Floral



21521 Z Dot



26761 Z Musical Notes



21520 Z Leaf Vine



22083 Z Dot



22626 Z Circle Dot



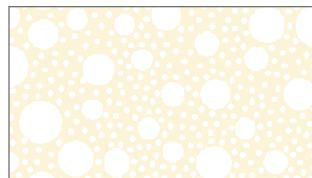
26762 Z Paw Prints



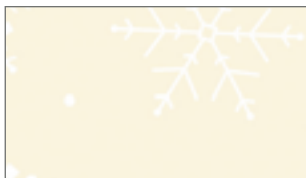
Cozy Creams White/Ecru



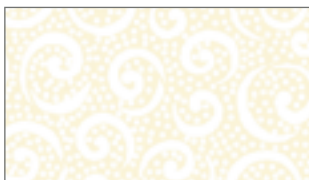
21516 E Stencil Floral



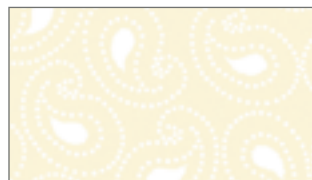
21521 E Dots



24600 E Snowflake



21517 E Curly Cue



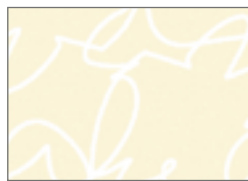
21519 E Paisley



26760 E Alphabets



23540 E Stars



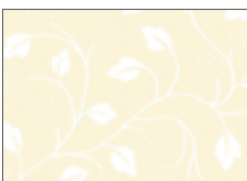
23541 E Scribble



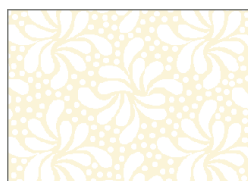
21523 E Stars



26761 E Musical Notes



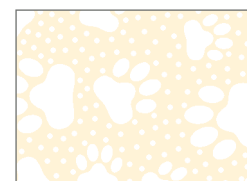
21520 E Leaf Vine



21518 E Pinwheel Floral



22083 E Dot



26762 E Paw Prints

(15) Fat Quarters
Illusions White
FATQUAR ILLUSW 3PACK



(14) Fat Quarters
Illusions Cream
FATQUAR ILLUSC 3PACK



(15) Fat Quarters
Illusions Gray
FATQUAR ILLUSG 3PACK



(12) Fat Quarters
Illusions Black
FATQUAR ILLUSB 3PACK

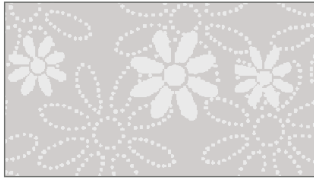
All designs shown at 100%

In-Stock Fabrics



Everyday Gray

Gray/White



21516 K Stencil Floral



24600 K Snowflake



21517 K Curly Cue



21519 K Paisley



26760 K Alphabets



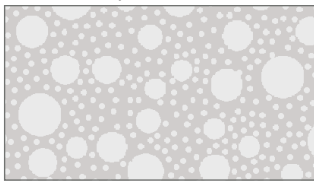
23540 K Stars



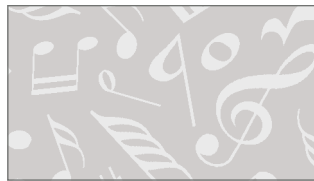
23541 K Scribble



21523 K Stars



21521 K Dots



26761 K Musical Notes



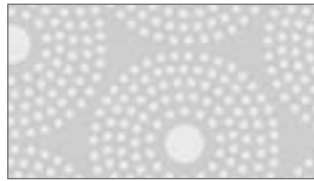
21520 K Leaf Vine



21518 K Pinwheel Floral



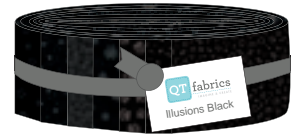
22083 K Dot



22626 K Circle Dot



26762 K Paw Prints



(40) 2½" Strips
Illusions Black
STRIPS ILLUSB 6PACK

Black Tie

Black/Charcoal



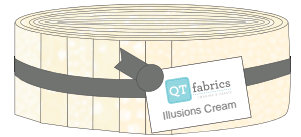
21516 J Stencil Floral



21517 J Curly Cue



21519 J Paisley



(40) 2½" Strips
Illusions Cream
STRIPS ILLUSC 6PACK



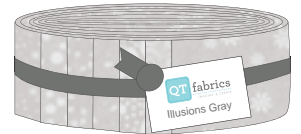
23540 J Stars



26760 J Alphabets



26761 J Musical Notes



(40) 2½" Strips
Illusions Gray
STRIPS ILLUSG 6PACK



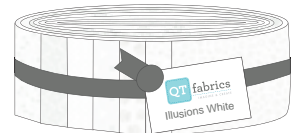
21520 J Leaf Vine



21521 J Dots



23541 J Scribble



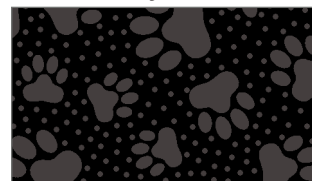
(40) 2½" Strips
Illusions White
STRIPS ILLUSW 6PACK



22626 J Circle Dot



21523 J Stars

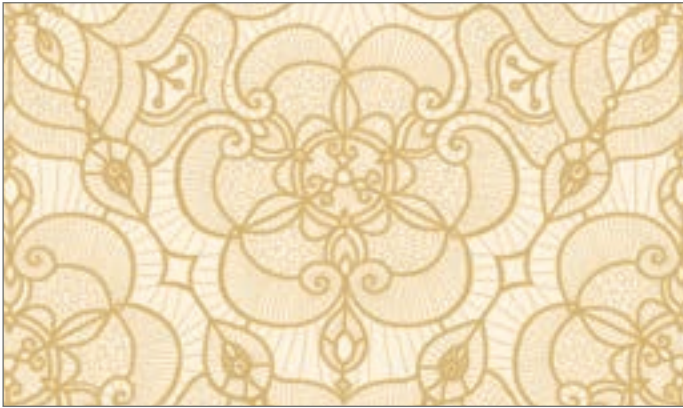


26762 J Paw Prints

Luminous Lace
SKU 24432 Lace Medallion

100% Cotton. 43/44"
60 x 60. D/R approx. 12 yds.

All designs shown at 100%
All designs have metallic



E (Cream)



EF (Cream/Forest)



F (Forest)



EJ (Cream/Black)



J (Black)



EM (Cream/Wine)



M (Wine)



ER (Cream/Red)



R (Red)



ZN (White/Navy)



N (Navy)



ZY (White/Royal)



Y (Royal)

Luminous Lace
SKU 24433 Chevron Brocade



E (Cream)



R (Red)



M (Wine)



N (Navy)



Y (Royal)



F (Forest)



J (Black)



(20) Fat Quarters
Luminous Lace
FATQUAR HOLLAC 3PACK

Lyla Damask
SKU 26106

100% Cotton. 43/44"
60 x 60. D/R approx. 15 yds

All designs shown at 100%.



26106 OV at 50%



RJ (Red/Black)



OP (Orange/Pink)



CP (Coral/Pink)



SR (Yellow/Red)



ES (Cream/Yellow)



HP (Lime/Pink)



HQ (Lime/Teal)



EQ (Cream/Aqua)



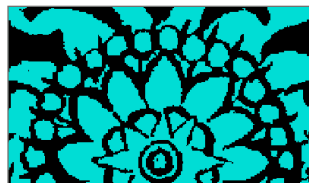
HG (Avocado)



GN (Green/Navy)



YQ (Royal/Aqua)



Q (Teal)



OV (Orange/Fuchsia)



SO (Gold/Orange)



HV (Lime/Fuchsia)



SH (Gold/Olive)



H (Olive)



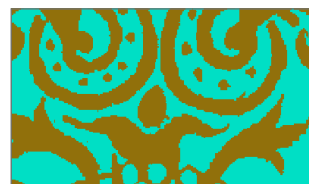
EH (Cream/Light Green)



HB (Olive/Blue)



HY (Green/Royal)



QH (Jade/Olive)



VH (Wisteria/Lt. Green)

Metals

100% Cotton, 43/44"
60 x 60. D/R approx. 12 yds.

All designs shown at 100%
All designs have metallic

Gold



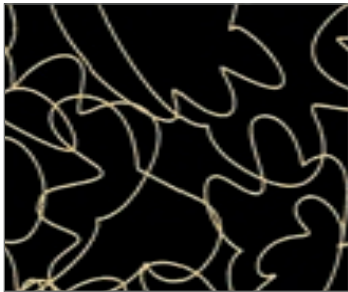
23543 ES (Cream/Gold) Leaf Vine



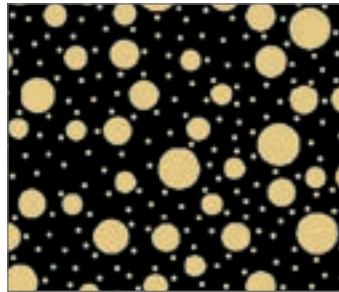
23544 ZS (White/Gold) Stars



24497 ZS (White/Gold) Snowflake



23542 JS (Black/Gold) Scribble



23539 JS (Black/Gold) Mixed Dots



23538 JS (Black/Gold) Curley Cue



24497 JS (Black/Gold) Snowflake

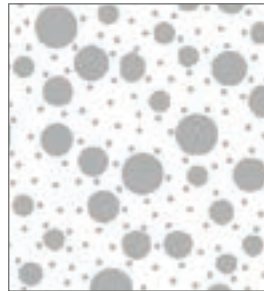
Silver



23538 ZK (White/Silver)
Curley Cue



23543 JK (Black/Silver)
Leaf Vine



23539 ZK (White/Silver)
Mixed Dots

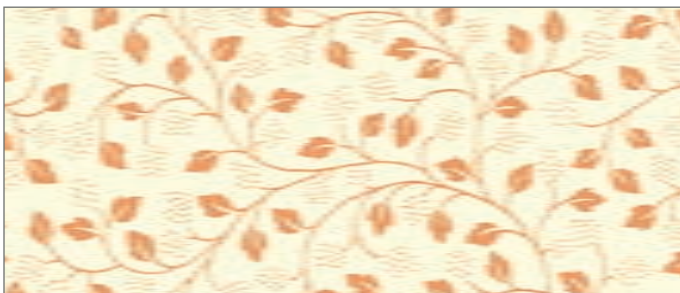


23544 JK (Black/Silver)
Stars

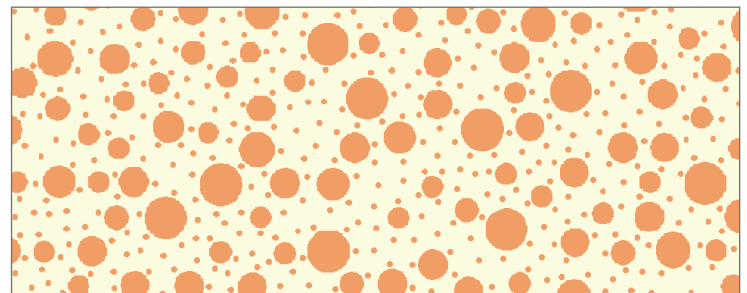


23542 ZK (White/Silver)
Scribble

Copper



23543 EC (Cream/Copper) Leaf Vine



23539 EC (Cream/Copper) Mixed Dots



23538 JC (Black/Copper) Curley Cue

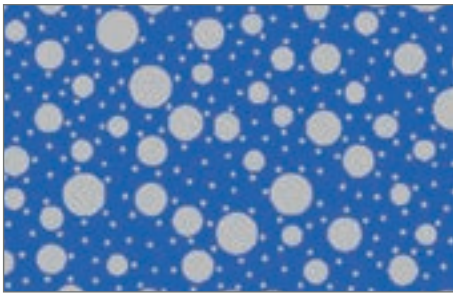


23544 JC (Black/Copper) Stars

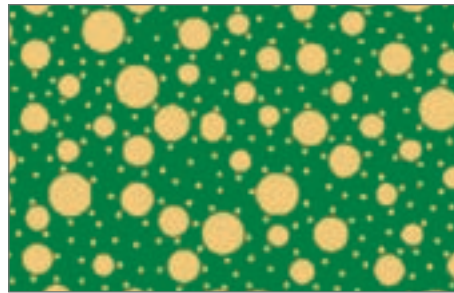


23542 JC (Black/Copper) Scribble

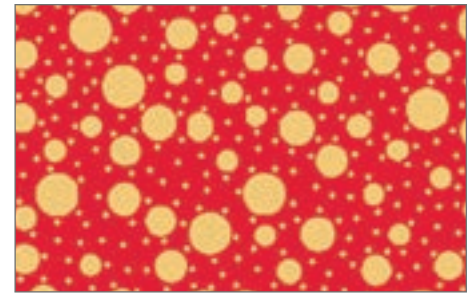
Holiday Brights



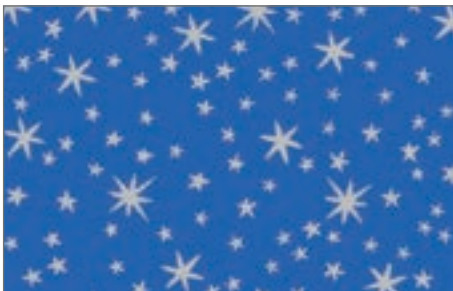
23539 Y (Royal/Metallic Silver)Dot



23539 G (Green/Metallic Gold) Dot



23539 R (Red/Metallic Gold) Dot



23544 Y (Royal/Metallic Silver) Stars



23544 G (Green/Metallic Gold) Stars



23544 R (Red/Metallic Gold) Stars

Holiday Classics



23538 N (Navy/Metallic Silver) Scroll



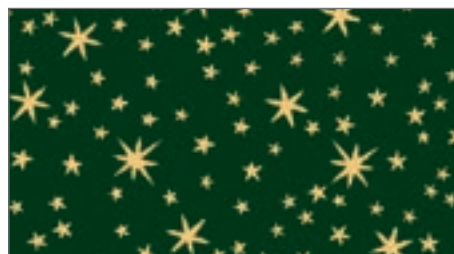
23538 F (Forest/Metallic Gold) Scroll



23538 M (Wine/Metallic Gold) Scroll



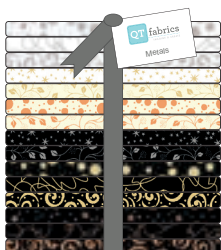
23544 N (Navy/Metallic Silver) Stars



23544 F (Forest/Metallic Gold) Stars



23544 M (Wine/Metallic Gold) Stars



**(15) Fat Quarters
Metals***

FATQUAR METALS 3Pack
*FQ Bundle does not include
Snowflake designs 24497 ZS & JS



**(12) Fat Quarters
Holiday Metals**

FATQUAR HOLMET 3PACK



**(42) 5" Squares
Holiday Metals**

5" SQ HOLMET 12PACK

Ombre Scrolls

SKU 24174

100% Cotton. 43/44"
60 x 60. D/R approx. 12 yds.



M (Ruby)



R (Cherry Red)



PV (Hot Pink)



P (Pink)



C (Melon)



O (Tangerine)



SO (Canary)



G (Spring Green)



H (Lime)



S (Lemon)



(30) Fat Quarters
Ombre Scroll

FATQUAR OMBRE SCROLL
3 per Pack

(30) 2 1/2" Strips
Ombre Scroll

STRIPS OMBRE SCROLL
6 per Pack



F (Forest)



GF (Kelly)



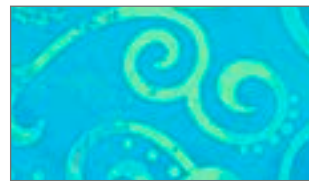
Y (Royal)



GQ (Jade)



BQ (Aqua)



Q (Marine)



B (Ocean Blue)



L (Lilac)



LV (Wisteria)



V (Grape)



W (Ultra Marine)



A (Sable)



AT (Root Beer)



J (Black)



N (Navy)



KZ (Crystal)



E (Ecru)



AK (Taupe)



K (Stone)



AS (Camel)

Ombre Stitches

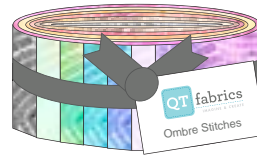
SKU 25974

100% Cotton. 43/44"
60 x 60. D/R approx. 12 yds.

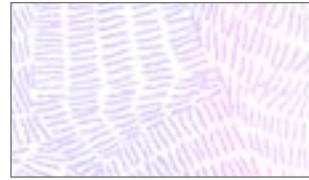
All designs on this page
shown at 50%



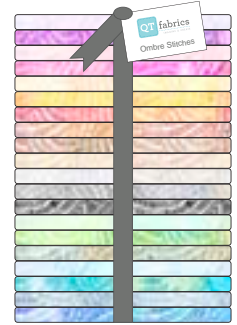
W (Chambray)



(40) 2½" Strips
Ombre Stitches
STRIPS OMRBST 6PACK



L (Soft Lilac)



(20) Fat Quarters
Ombre Stitches
FATQUAR OMRBST 3PACK



Y (Ultramarine)



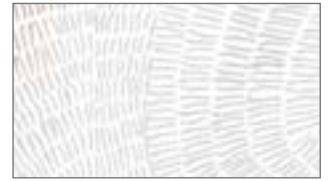
V (Purple)



J (Black)



P (Soft Pink)



KZ (Light Gray)



B (Soft Blue)



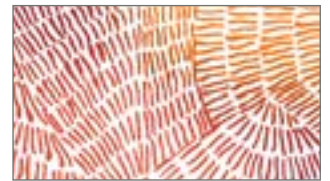
VP (Bubble Gum)



K (Gray)



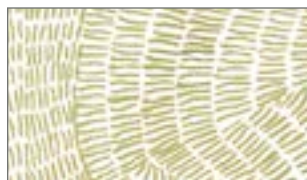
R (Chili)



T (Rust)



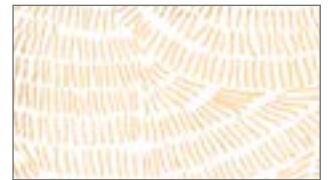
Q (Dark Turquoise)



F (Moss)



SO (Marigold)



E (Straw)



H (Soft Green)



G (Green)



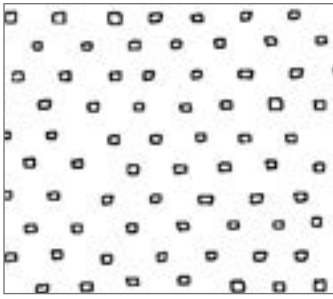
S (Soft Yellow)



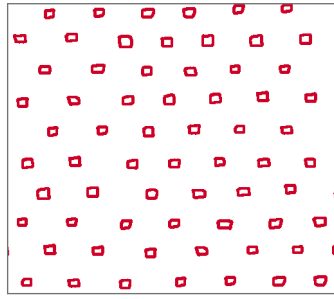
A (Brown)

Pixie Dots
SKU 24299

100% Cotton. 43/44"
60 x 60. D/R approx. 15 yds.



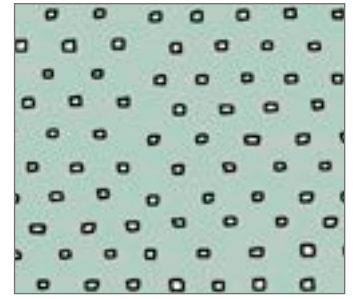
Z (White)



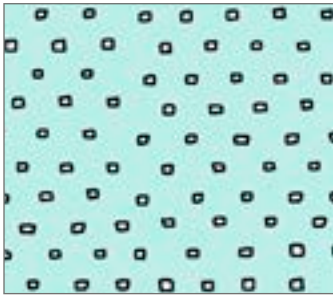
ZR (White/Red)



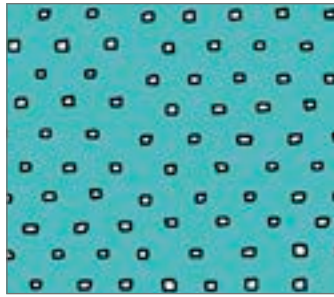
E (Ecru)



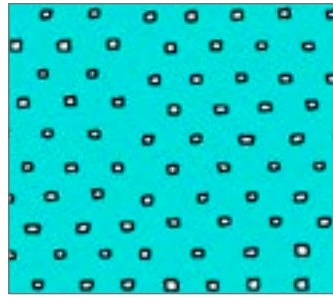
QE (Dusty Aqua)



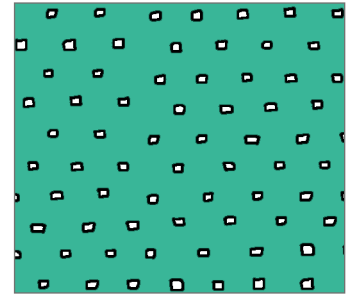
QH (Aqua)



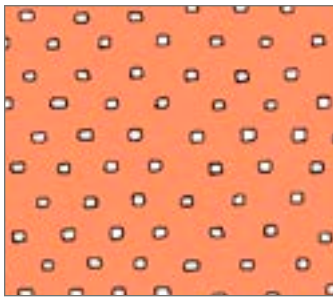
QJ (Dark Aqua)



Q (Turquoise)



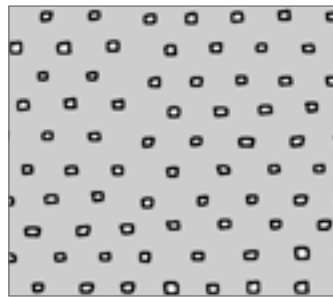
GJ (Spearmint)



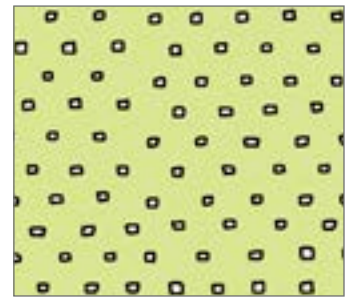
C (Apricot)



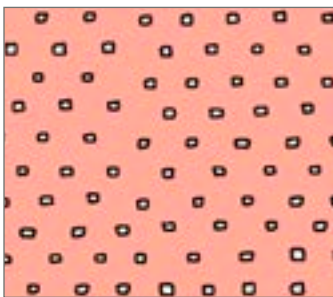
AE (Stone)



KZ (Gray)



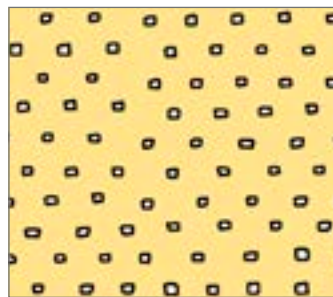
H (Light Green)



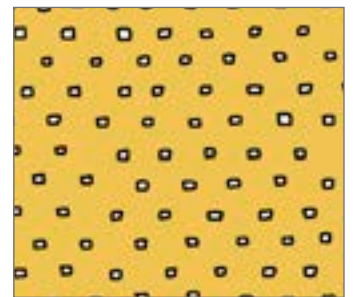
P (Salmon)



A (Dark Khaki)



SZ (Yellow)



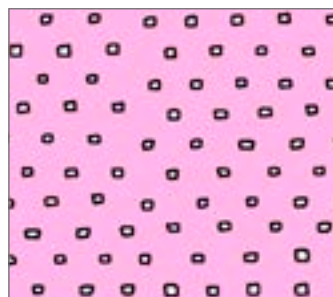
S (Gold)



CP (Dark Salmon)



PD (Baby Pink)



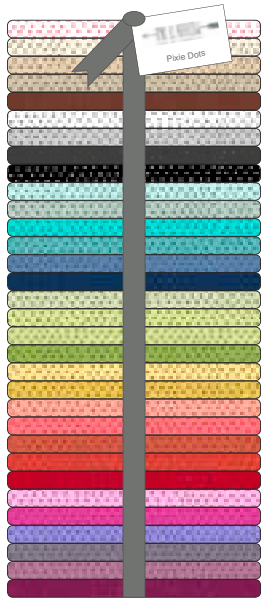
PZ (Bubble Gum)



PV (Hot Pink)

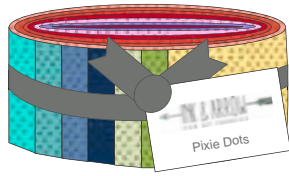
All designs shown at 100%

In-Stock Fabrics



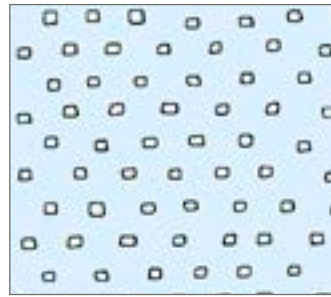
(32) Fat Quarters
Pixie Dots
FATQUAR PIXIE 3PACK

**FQ Bundle does not include colors 24299 BZ, C, GJ, OS & PD*

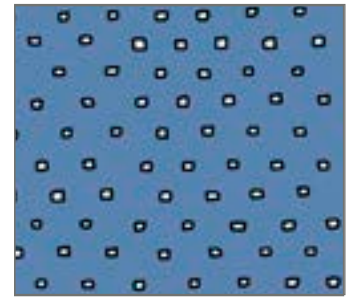


(40) 2½" Strips
Pixie Dots
STRIPS PIXIE 6PACK

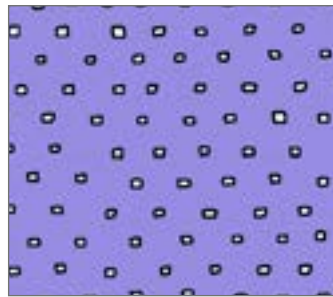
**Roll does not include colors 24299 BZ, C, GJ, OS & PD*



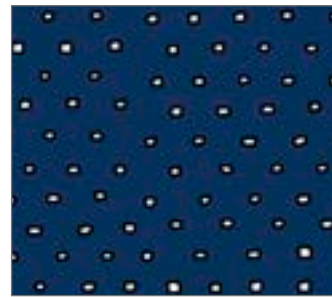
BZ (Baby Blue)



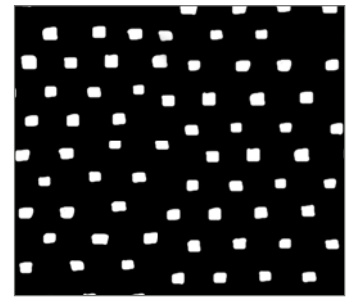
W (Wedgewood)



LV (Lavender)



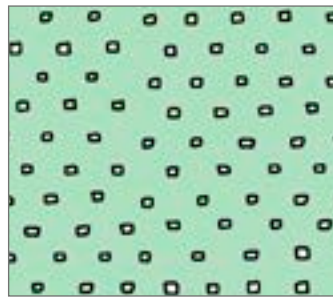
N (Navy)



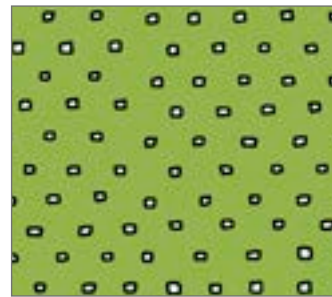
J (Black)



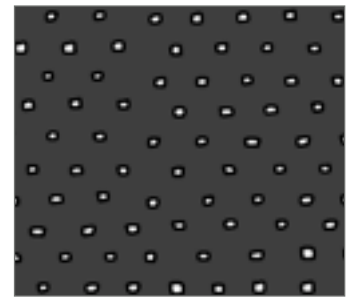
HJ (Green Tea)



QZ (Seafoam)



GH (Lime)



K (Charcoal)



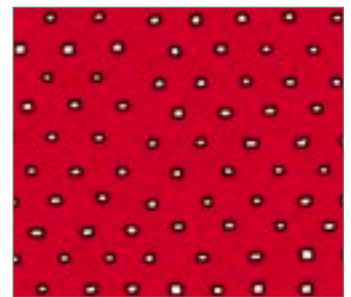
OS (Pumpkin)



O (Tomato)



RO (Chili)



R (Red)



VJ (Dusty Purple)



L (Lilac)



V (Plum)



AJ (Brown)

Scrollscapes
SKU 24362

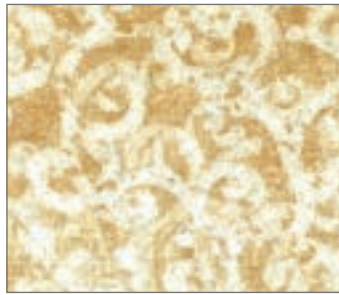


100% Cotton. 43/44"
60 x 60. D/R approx. 12 yds.

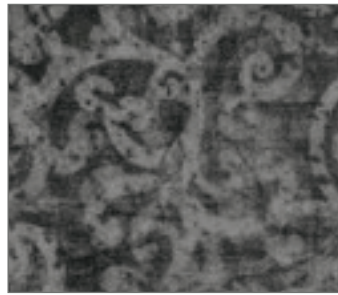
All designs shown at 100%



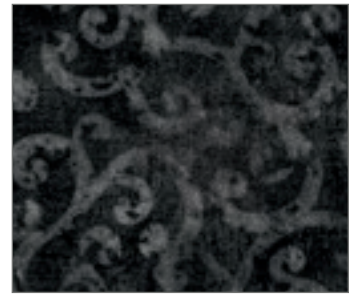
KE (Stone)



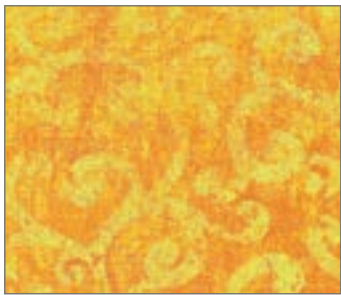
E (Parchment)



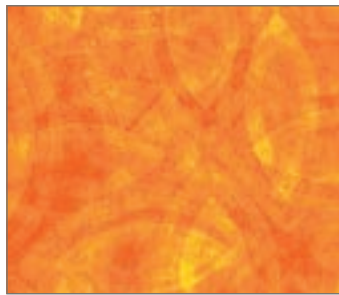
K (Gray)



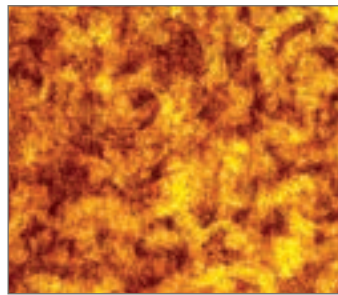
J (Ebony)



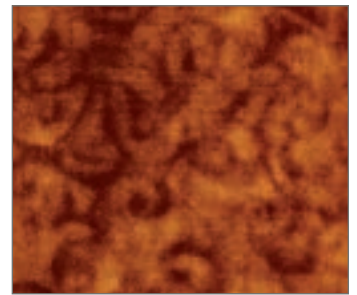
S (Sun)



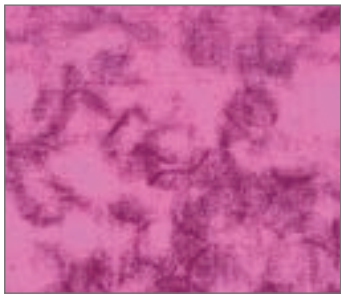
O (Orange)



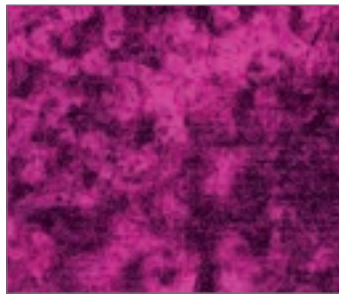
T (Burnt Orange)



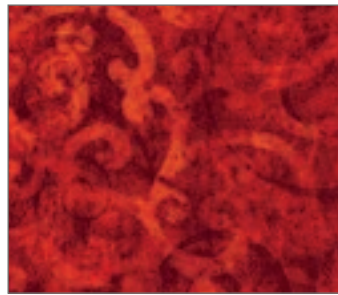
AS (Cognac)



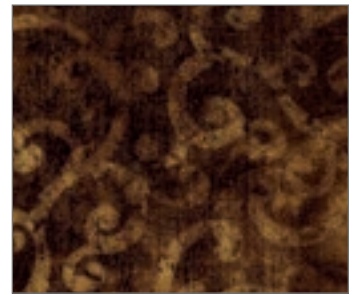
D (Wild Rose)



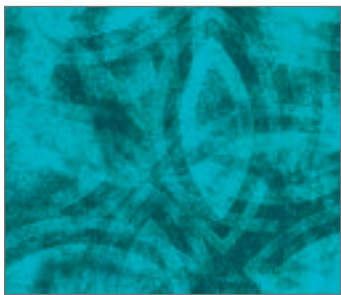
VJ (Magenta)



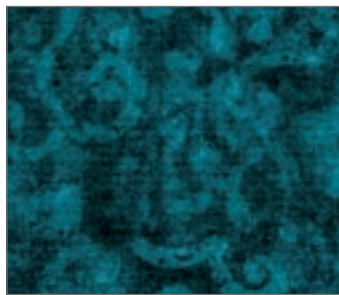
R (Red)



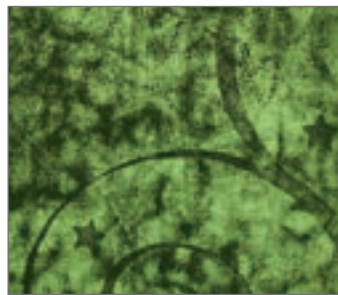
A (Espresso)



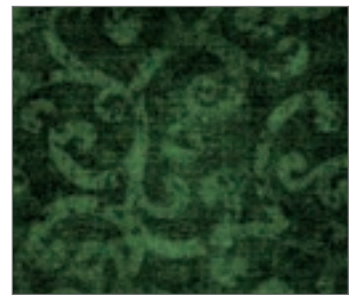
Q (Turquoise)



QW (Teal)



G (Moss)



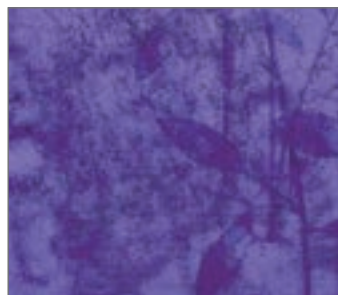
F (Evergreen)



Y (Cobalt)



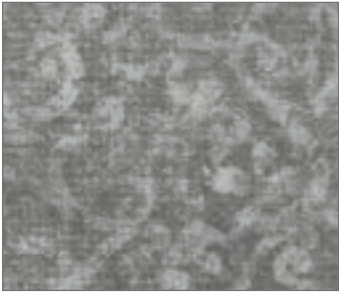
W (Indigo)



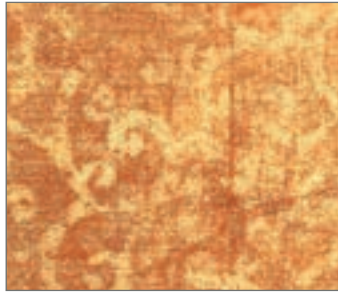
L (Crocus)



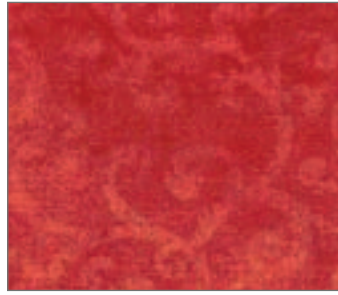
V (Grape)



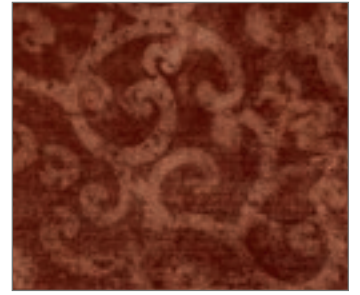
KZ (Smoke)



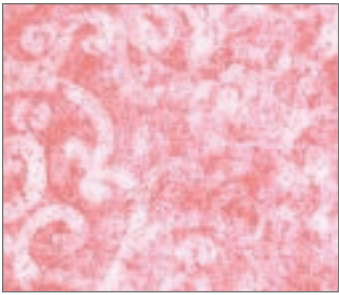
SA (Honey)



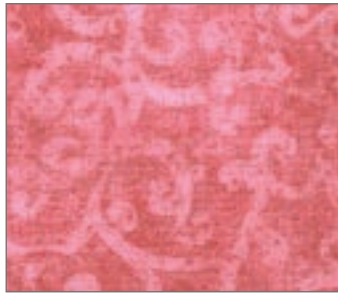
RO (Tomato)



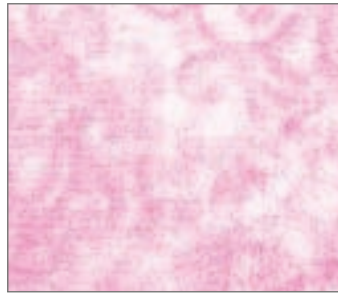
AE (Acorn)



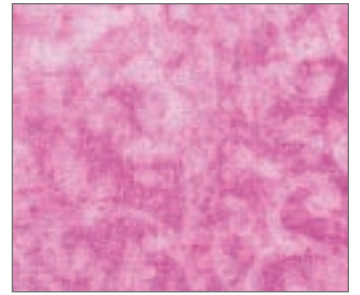
C (Cameo Pink)



PC (Tea Rose)



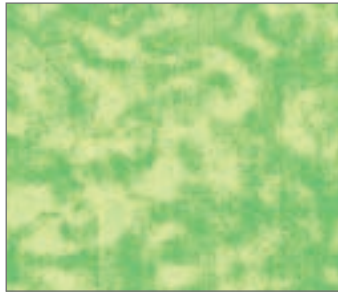
P (Bubblegum)



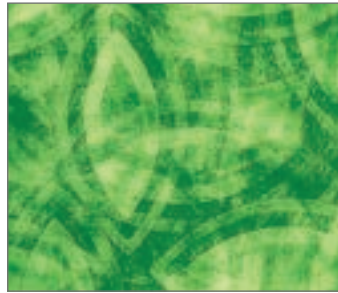
PV (Plum Pink)



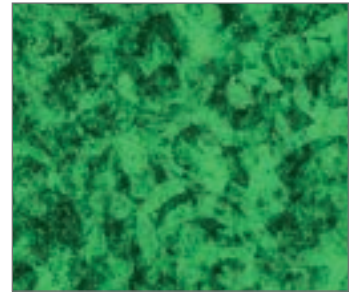
SZ (Maize)



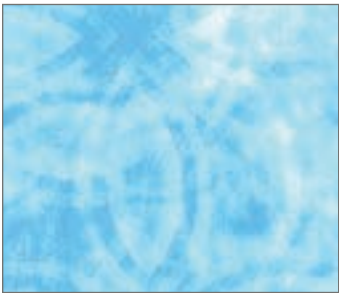
H (Spring Green)



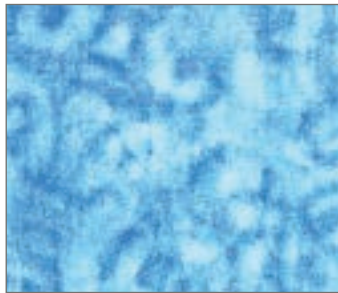
HG (Grass)



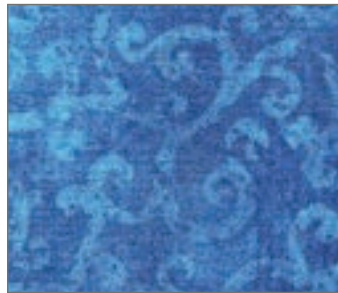
FG (Emerald)



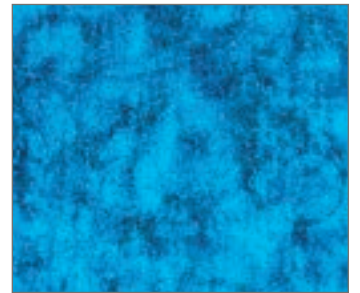
BZ (Powder Blue)



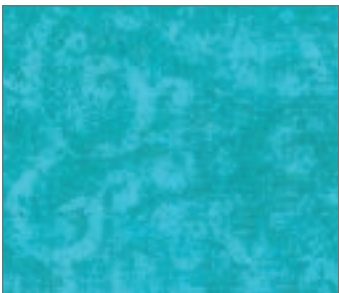
B (Ocean)



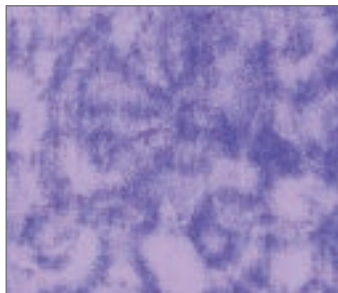
QY (Lapis)



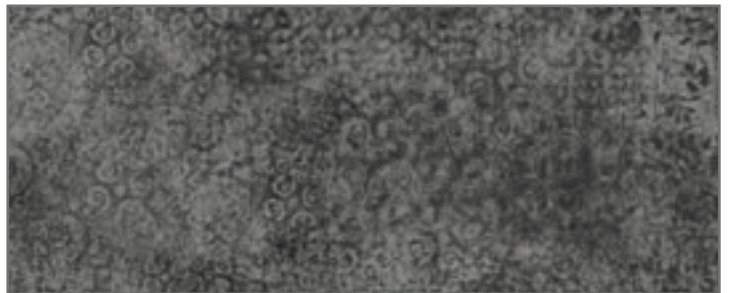
BY (Bluebell)



QZ (Aqua)



VL (Hyacinth)



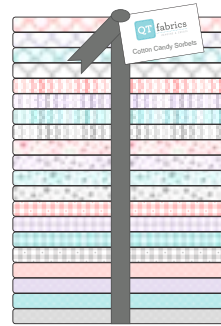
Full repeat shown of 24362 K at 15% - Repeat measures approx. 24" x 44" from selvage to selvage

Sorbets

100% Cotton. 43/44"
60 x 60. D/R approx. 12 yds.



**(20) 2½" Strips
Sorbets**
Cotton Candy
STRIPS SORBCC 12PACK



**(20) Fat Quarters
Sorbets**
Cotton Candy
FATQUAR SORBCC 3PACK

Carnation Pink



23688 P Geo

Lavender



23688 L Geo

Aqua

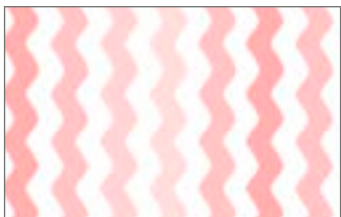


23688 Q Geo

Yellow



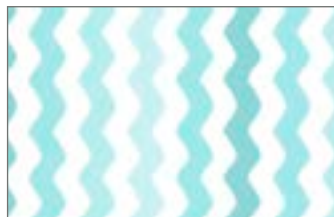
23688 S Geo



23689 P Rick Rac



23689 L Rick Rac



23689 Q Rick Rac



23689 S Rick Rac



23690 P Dots



23690 L Dots



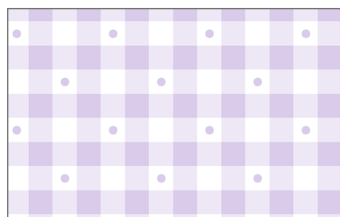
23690 Q Dots



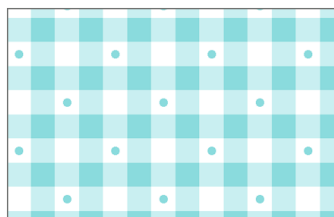
23690 S Dots



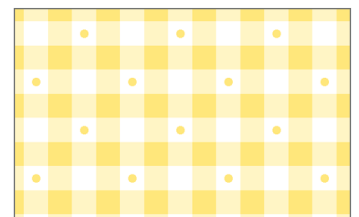
23691 P Gingham



23691 L Gingham



23691 Q Gingham



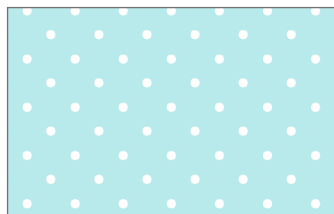
23691 S Gingham



23692 P Mini Dot



23692 L Mini Dot



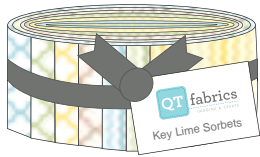
23692 Q Mini Dot



23692 S Mini Dot

All designs shown at 100%

In-Stock Fabrics



(20) 2½" Strips
Sorbets
Key Lime
STRIPS SORBKL 12PACK



(20) Fat Quarters
Sorbets
Key Lime
FATQUAR SORBKL 3PACK

Light Fern Green



23688 H Geo

Cloud Blue



23688 B Geo

Light Taupe



23688 A Geo

Soft Gray



23688 K Geo



23689 H Rick Rac



23689 B Rick Rac



23689 A Rick Rac



23689 K Rick Rac



23690 H Dots



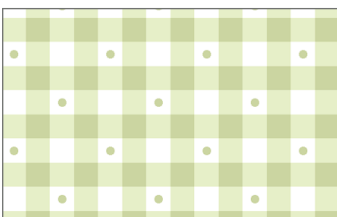
23690 B Dots



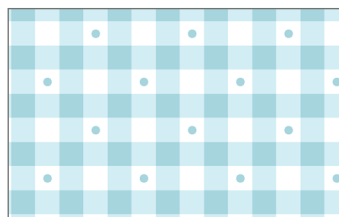
23690 A Dots



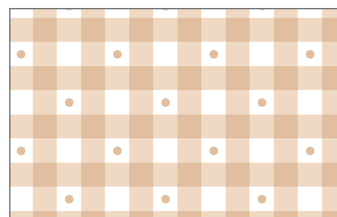
23690 K Dots



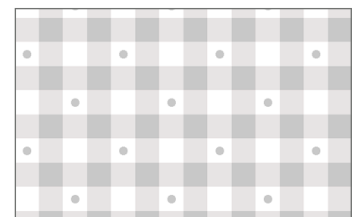
23691 H Gingham



23691 B Gingham



23691 A Gingham



23691 K Gingham



23692 H Mini Dot



23692 B Mini Dot



23692 A Mini Dot



23692 K Mini Dot

Sorbet Essentials

100% Cotton. 43/44"
60 x 60. D/R approx. 12 yds.

Red



23688 R Geo

Orange



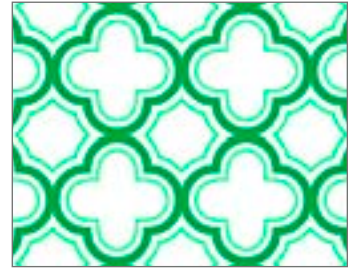
23688 O Geo

Yellow



23688 SZ Geo

Green



23688 G Geo



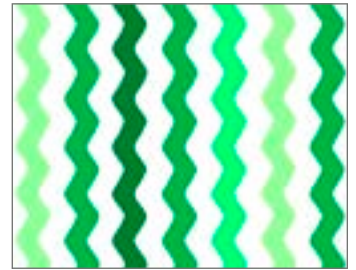
23689 R Rick Rac



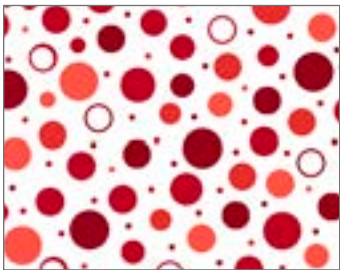
23689 O Rick Rac



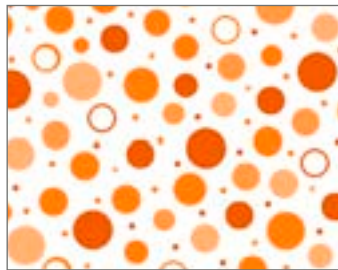
23689 SZ Rick Rac



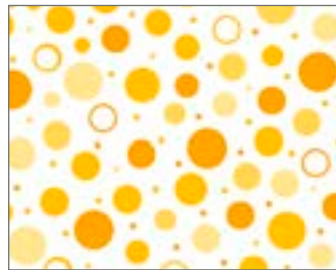
23689 G Rick Rac



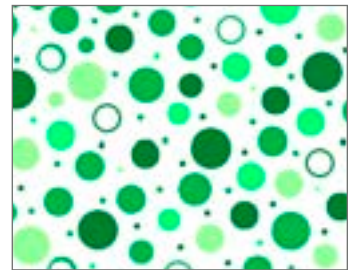
23690 R Dots



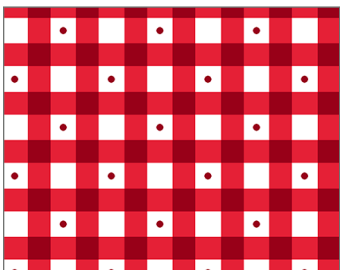
23690 O Dots



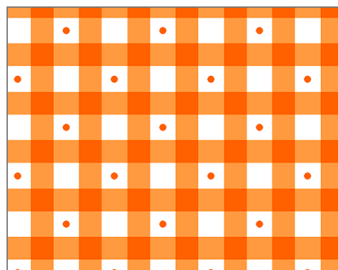
23690 SZ Dots



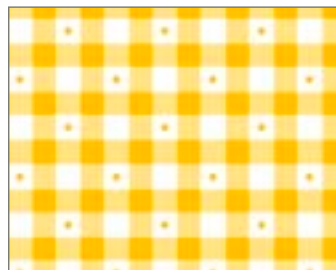
23690 G Dots



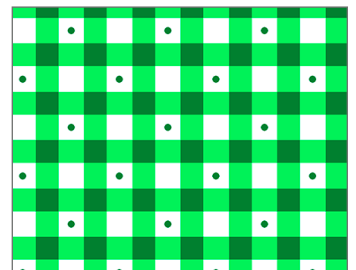
23691 R Gingham



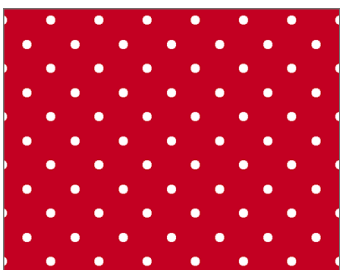
23691 O Gingham



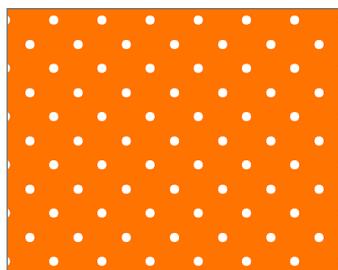
23691 SZ Gingham



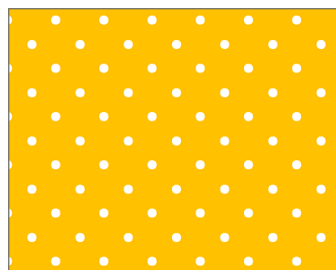
23691 G Gingham



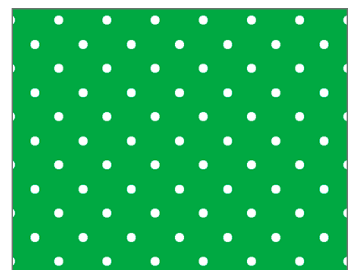
23692 R Mini Dot



23692 O Mini Dot



23692 SZ Mini Dot



23692 G Mini Dot

All designs shown at 100%

In-Stock Fabrics

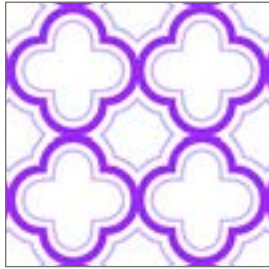


Royal



23688 Y Geo

Purple



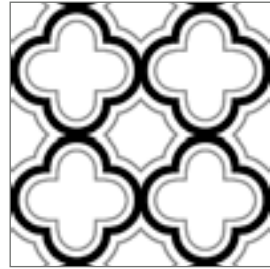
23688 V Geo

Navy



23688 N Geo

Black



23688 J Geo



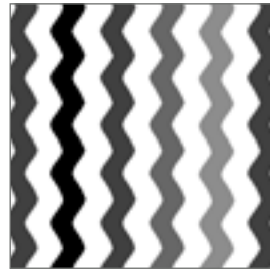
23689 Y Rick Rac



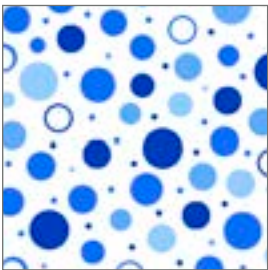
23689 V Rick Rac



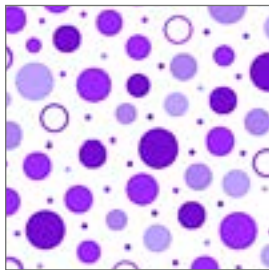
23689 N Rick Rac



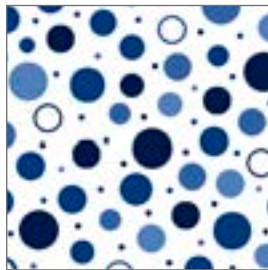
23689 J Rick Rac



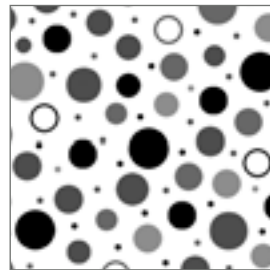
23690 Y Dots



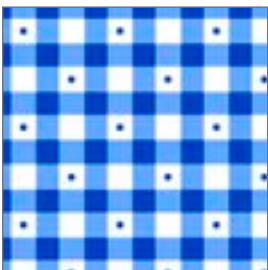
23690 V Dots



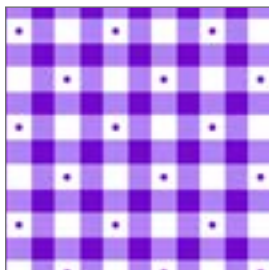
23690 N Dots



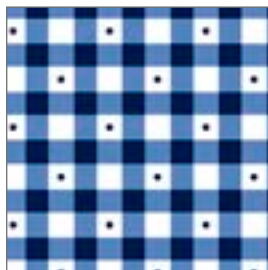
23690 J Dots



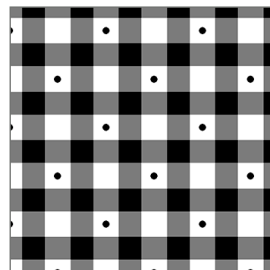
23691 Y Gingham



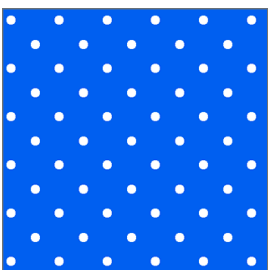
23691 V Gingham



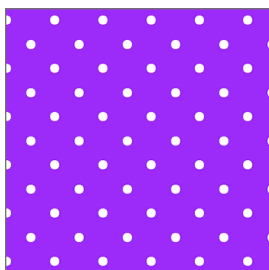
23691 N Gingham



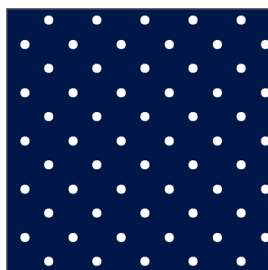
23691 J Gingham



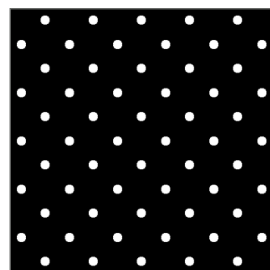
23692 Y Mini Dot



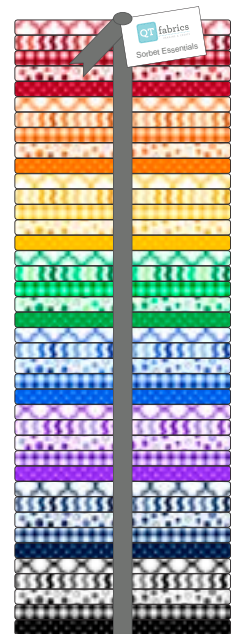
23692 V Mini Dot



23692 N Mini Dot



23692 J Mini Dot



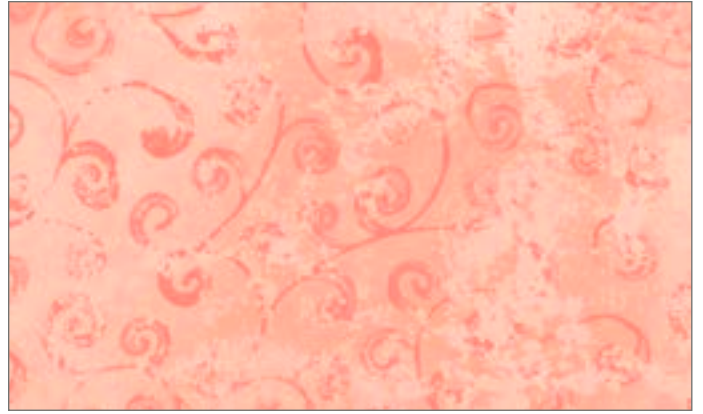
(40) Fat Quarters
Sorbet Essentials
FATQUAR SORBES 3PACK

Temptations
SKU 22542

100% Cotton. 43/44"
60 x 60. D/R approx. 12 yds.



GF (Shamrock)



CZ (Shrimp)



QH (Aqua)



HE (Avocado)



F (Forest)



QK (Viridian)



BK (Chambray)



FG (Olive)



PZ (Powder Pink)



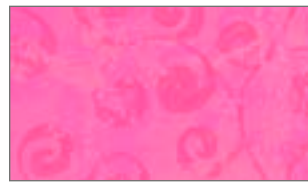
PX (Carnation)



AE (Toffee)



BZ (Powder Blue)



P (Bubblegum)



PV (Azalea)



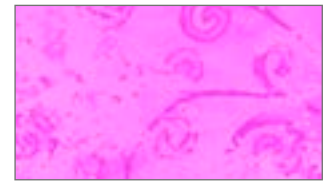
R (Red)



AK (Driftwood)



L (Lilac)



VD (Plum Pink)



M (Crimson)



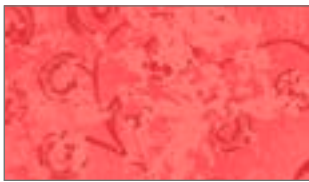
MV (Merlot)



AU (Bark)



AT (Chestnut)



PC (Strawberry)



C (Melon)



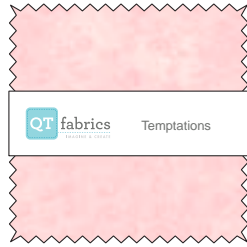
TK (Marsala)



A (Root Beer)

All designs shown at 100%

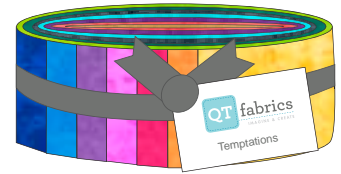
In-Stock Fabrics



(50) 5" Squares
Temptations
5"SQ TEMNEW 12 PACK



Fat Quarter Box
(50) Fat Quarters
Temptations
PRODUCT BASICS TEMPT



(50) 2½" Strips
Temptations
STRIPS TEMNEW 6PACK



SA (Marigold)



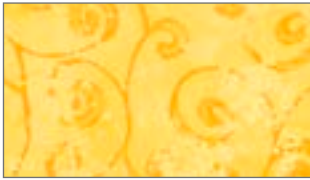
OZ (Clementine)



O (Carrot)



T (Terracotta)



S (Canary)



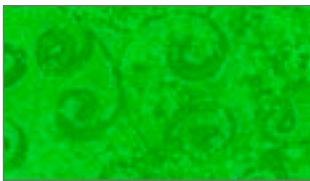
SZ (Lemon Sorbet)



H (Green Mist)



HS (Lime)



G (Kelly)



W (Slate Blue)



BN (Midnight Blue)



B (Pacific Blue)



Q (Caribbean)



QZ (Turquoise)



VZ (Wisteria)



VP (Pansy)



KE (Putty)



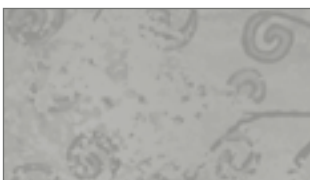
EA (Straw)



E (Vanilla Cream)



V (Grape)



KZ (Smoke)



K (Steel)

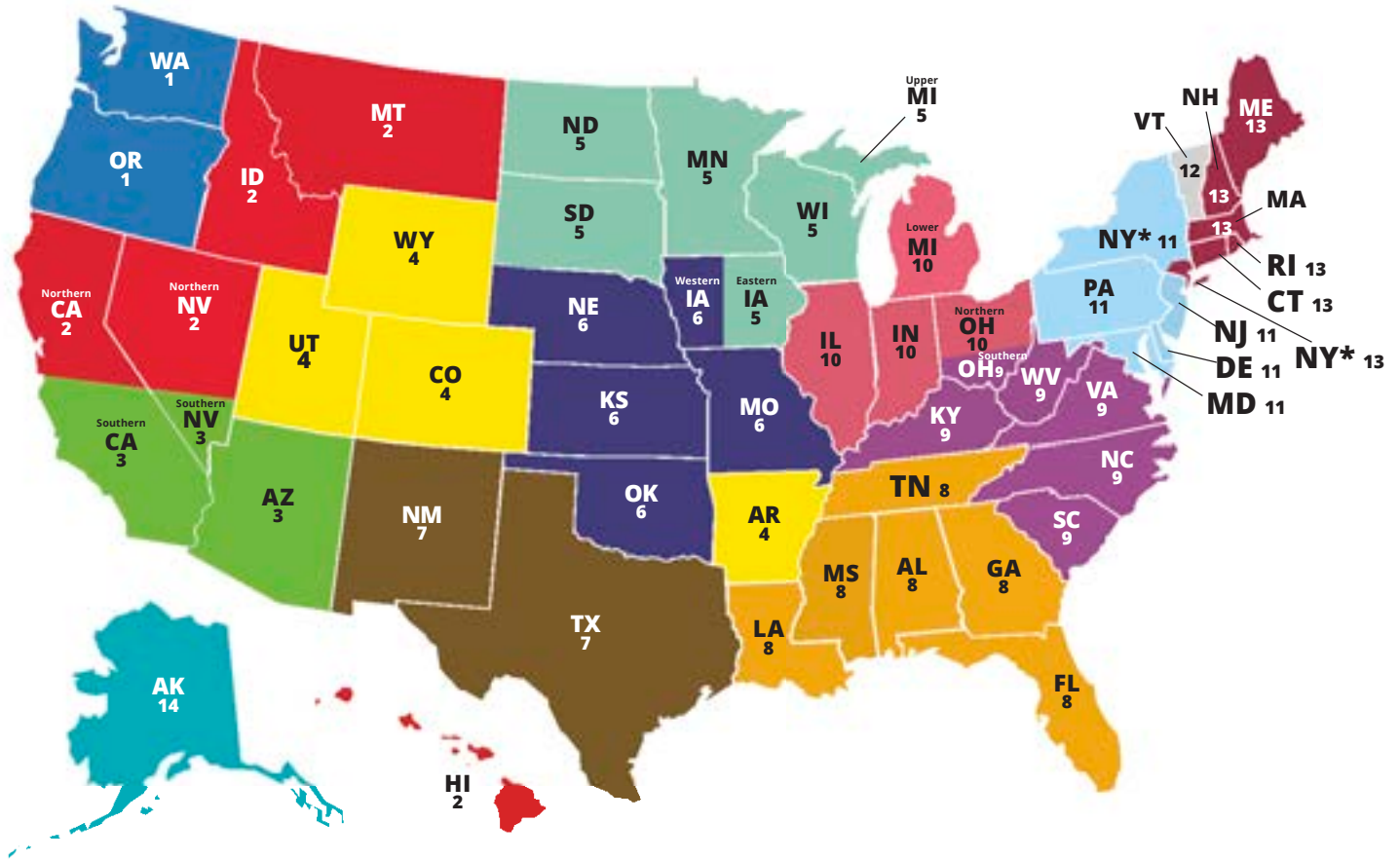


KA (Iron)



JK (Onyx)

REGIONAL SALES MANAGERS



OR, WA

Regional Sales Manager
Martha Manning-Jurey
 Portland, OR
 Cell: 904.226.8020
 Fax: 800.540.7063
 Email: mjurey@cpw.com



1

Northern CA, HI, ID, MT, Northern NV

Regional Sales Manager
Ann Haley
 San Ramon, CA
 Cell: 925.785.8117
 Fax: 800.540.7063
 Email: ahaley@cpw.com



2

AZ, Southern CA, Southern NV

Regional Sales Manager
Barbara Wing
 Hawthorne, CA
 Cell: 310.339.4515
 Fax: 800.540.7063
 Email: bwing@cpw.com



3

AR, CO, UT, WY

Regional Sales Manager
Debra Coffman
 Denver, CO
 Cell: 303.907.8624
 Fax: 800.540.7063
 Email: dcoffman@cpw.com



4

Eastern IA, Upper MI, MN, ND, SD, WI

Regional Sales Manager
Kay Peterson
 Owatonna, MN
 Cell: 507.475.2529
 Fax: 800.540.7063
 Email: kpeterson@cpw.com



5

Western IA, KS, MO, OK, NE

Regional Sales Manager
Coby J. McComas
 Lee's Summit, MO
 Cell: 816.803.8195
 Fax: 800.540.7063
 Email: cmccomas@cpw.com



6

NM, TX

Regional Sales Manager
Tammie Randle
 Bedford, TX
 Cell: 817.946.2975
 Fax: 800.540.7063
 Email: trandle@cpw.com



7

AL, FL, GA, LA, MS, TN

Regional Sales Manager
Mike Flynn
 Atlanta, GA
 Cell: 205.478.7679
 Fax: 800.540.7063
 Email: mflynn@cpw.com



8

DC, KY, NC, Southern OH, SC, VA, WV

Regional Sales Manager
Mark Economy
 Chesterfield, VA
 Cell: 804.304.9016
 Fax: 800.540.7063
 Email: meconomy@cpw.com



9

IL, IN, Lower MI, Northern OH

Regional Sales Manager
Jayne Clark
 Danville, IN
 Cell: 317.509.1312
 Fax: 800.540.7063
 Email: jclark@cpw.com



10

DE, MD, NJ, NY*, PA

Regional Sales Manager
Kevin Driscoll
 Aberdeen, NJ
 Cell: 732.310.0145
 Fax: 800.540.7063
 Email: kdriscoll@cpw.com
 *excluding south & east of Route 287



11

VT

Regional Sales Manager
Ken Gamache
 Cranston, RI
 Cell: 508.948.8119
 Fax: 800.540.7063
 Email: kgamache@cpw.com



12

CT, MA, ME, NH, NY*, RI

Sales Manager
Jesus Montero
 New York, NY
 Cell: 347.968.4427
 Fax: 800.540.7063
 Email: jmontero@cpw.com
 *defined as south & east of Route 287



13

AK

Independent Rep
Janai Comer
 Valdez, Alaska
 Cell: 907.831.1055
 Fax: 800.540.7063
 Email: seiscsafe@cvineternet.net

14

INTERNATIONAL DISTRIBUTORS

If you are a potential wholesale customer and do not see your country or region listed, please contact our International Sales Manager.

EUROPE

International Sales Manager, Europe

Mode-Meter AG
PO Box 317
Baselstrasse 22 B
CH-4125

Riehen/Basel
Dieter Roesch
Marie Roesch



Tel: +41-61-643-0560
Mobile: +49-171-731-2958
Fax: +41-61-643-0561
Email: Mode-Meter@mode-meter.ch

AUSTRALIA

XLN Fabrics
2/21 Binney Rd.
Kings Park
NSW 2148
Australia

Tel: +61-2-9621-3066
Fax: +61-2-9622-3074
Email: allanmurphy@xln.com.au

BRAZIL

Fernando Maluhy CIA Ltda
Rua Cav. Basilio Jafet, 38
8,0 Andar Sala 804
Sao Paulo, SP Brazil 0122020

Mr. Fernando Maluhy
Tel: +5511-3325-2015
Fax: +5511-3325-2015
Email: bernardo@fernandomaluhy.com.br
Email: fernandomaluhy@fernandomaluhy.com.br

CANADA

International Textiles Ltd.
8811 Beckwith Rd.
Richmond, B.C.
Canada V6X 1V4

Tel: +604-270-7593
Fax: +604-270-7598
Email: intex.sales@shawbiz.ca

CHILE

Comercial Golf SpA
Independencia 369 local 13
Independencia 8380000
Santiago, Chile

Ester Benquis
Tel: +56-2-6966996
Email: ebenquis@gmail.com

COLOMBIA

Bodega Decorativa, DECORModa Textiles
Carrera 81 No. 32-330
Medellin, Antioquia
Colombia

Tel: +57-4-576-0570
Fax: +57-4-250-7617
www.decormoda.com.co
E-mail: decormoda@decormoda.com.co
Contact: Juan Daniel Orrego Pizano

Arte y Manualidades
Calle 6A #47-79
Cali, Colombia

America Rivas
Tel: +57-2-552-3957
Fax: +572-405-4966
Email: america362@yahoo.com

Telas y Tonos
Calle 125 No 21a-39
Bogota, Colombia

Raphael Ochoa
Tel: +57-1-215-1555
Email: administracion125@telasytonos.com

COSTA RICA

El Costurero
1314-2150 San Jose
Costa Rica
Maria Teresa Arteaga
Rocio Flaqué
Tel: +506-2225-9534
Fax: +506-2225-0526
Email: elcosturero@racsa.co.cr

CYPRUS

K. Didonian Textiles
16 Constantinou
Kava Fl Street P. code 30,76
Limassol, Cyprus
Mr. Richard Didonian
Tel: +357 25 331 739
Fax: +357 25 387 476
Email: dingdong@cytanet.com.cy

CZECH REPUBLIC

Cotton Kingdom
Patchwork & Quilting Fabrics Wholesale
Svambovee 354
760 01 Zlin
Czech Republic
Mr. Libor Kos
Tel: +420 603235078
Email: cotton-kingdom@seznam.cz

Siti Niti
Ochoz u Brna 624E
66402
Czech Republic
Eva Maresova
Email: info@sitiniti.cz
Web: www.sitiniti.cz

FRANCE/BELGIUM

PASCAL et BEATRIX
48 rue Gustave Eiffel
ZA Albitech
81000 Albi
Mr Geoffrey Davi
Tel: +33-05-63-45-22-44
Mobile: +33-06-80-65-40-11
Fax: +33-05-63-54-29-66
Email: contact@pascalbeatrice.com

GERMANY & AUSTRIA

Zweigart & Sawitzki
Fronackerstrasse 50
D-71063 Sindelfingen
Germany
Mrs. Klotz
Mr. Michael Georgii
Tel: +49-70-31-795414
Fax: +49-70-31-795476
Email: fbaudouin@zweigart.de

GUATEMALA

Casa Decora & CIA Ltda
Primera calle 18-83
Zona 15
Local 23 Vista Hermosa II
Guatemala, Guatemala
Miriam De Palacios
Tel: +502-2369-6477

HONG KONG

Modes Group Ltd.
RM J/F Universal IND Centre
19-25 Shan Mei St.
Fo Tan, Hong Kong
Sandra Bach
Managing Director / Geschäftsführerin
Tel: +852-317-216-30
Fax: +852-212-417-59
Email: sandra@modes4u.com

HUNGARY

Siti Niti
Látkovna.cz
Ochoz u Brna 624E, Czech Republic
66402
Eva Maresova
Tel: +420 775 507 410
Web: www.latkovna.cz
Email: obchod@latkovna.cz

ITALY

HFT SRL
Viale Piave 60
24022 Alzano Lombardo (BG)
Italy
Tamara Morzenti
Tel: +39 035 512 450
Fax: +39 035 515 466
Web: www.hft.it

JAPAN

Kiyohara & Co., Ltd.
5-2 Minamikyuhoji
4-Chome, Chuo-Ku
Osaka, Japan
Kaz Fujii
Tel: +8166-252-4764
Fax: +8166-252-4377
Email: kazuo.fujii@kiyohara.co.jp

Lecien Corporation
7F Yotsubashi Grand Square,
1-28-3 Shinmachi,
Nishi-ku Osaka 550-0013
Mr. Fuminori Ito
Tel: +06-4390-5526
Fax: +06-4390-5516

MEXICO

Grupo Parisina
Venustiano Carranza No. 77
Col. Centro
Mexico City, Mexico 06060
Juan Jose Sierra Requejo
Tel: +525-55512-2353
Fax: +525-55521-2145

NETHERLANDS

Rinske Stevens Design B.V.
Costerweg 4C
4104 AJ CULEMBORG
Netherlands
Tel: +31-345788-999
Fax: +31-847360-013
Email: info@rinskestevensdesign.com

NEW ZEALAND

Tiffanies Treasures
PO Box 300-194
Albany, Auckland
New Zealand
Mr. Pawan Kalsi
Tel: +64-9-477-0155
Fax: +64-9-476-7240
Email: info@tiffaniestreasures.co.nz

PUERTO RICO

Cabrera Marketing Co.
#95 Calle La Cambija Ste. 7
Bayamon, P.R. 00961
Noel Cabrera
Tel: +787-787-7890 or 778-7875
Fax: +787-269-6982
Email: cabreramarkpr@gmail.com

J. Pica & Co, Inc(Tiendas Capri)
Calle A. Esq. Escorial
Urb. Industrial Mario Julia
Puerto Nuevo, PR 00920
Jose Acosta
Tel: +787-793-7575
Fax: +787-793-0668
Email: jacosta@jpica.com

RUSSIA

Gela LTD
141400, Vladenije 13B
Vashutinskoje shosse
Chimki, Moscow area
Russia
Anton Shcherbakov
Tel: +74 95 742 50 43
Fax: +74 95 742 80 70
Web: www.gela.ru
Email: anton@gela.ru

SCANDINAVIA

Adlico Textile Aps.
Merkurvej 2
7430 Ikast
Denmark
Mr. Thomas Eriksen
Mr. Jon Christensen
Tel: +45 978 625 25
Fax: +45 978 625 24
Mobile: +45 299 261 08
Handy: +49 151 616 048 71
Email: jon@adlico.dk
Web: <http://www.adlico.dk>

SINGAPORE

Sing Mui Heng (PTE) Ltd
315 Outram Road #05-09 Tan Boon Liat
Building
Singapore 169074
Sim Piah Hui
Tel: +65-6221-9209
Fax: +65-6223-4884
Email: mgt@singmuheng.com

SLOVAKIA

Daša Kozmárová - Bubuláková
Lužná 2320/6
Šafa 927 05
www.bubulakovo.sk
www.bubulakovo.hu

SPAIN/PORTUGAL

ALBA Patchwork S.L.
C. Orient, 12
E-43204 Reus
Tarragona, Spain
Sra. Victoria Alba
Tel: +34-977-77-20-21
Fax: +34-977-77-20-21
Email: albabatch@albabatch.com

SWITZERLAND

Mode-Meter AG
PO Box 317
Baselstrasse 22 B
CH-4125
Riehen/Basel
Dieter Roesch
Tel: +41-61-643-0560
Mobile: +49-171-731-2958
Fax: +41-61-643-0561
Email: Mode-Meter@mode-meter.ch

Cotton & Color
Inzlingerstrasse 279
CH4125 Riehen
Astrid Oberhauser
Tel: +41-61-641-9770
Email: info@cotton&color.com

J. GASSER & CO. AG
Industriestrasse 4
CH - 4658 Däniken
Toni Peier
Tel: +41 62 288 90 82
Fax: +41 62 288 90 85
Web: <http://www.gasser-daeniken.ch>

TAIWAN

Taiwan Cheer Champ Co., Ltd
11th Fl., Universal Center No. 175, Sec. 1
Tatung Rd.,
Hsi Chih, New Taipei City 221, Taiwan
(R.O.C)
Joyce Yen
Tel: +886-2-26498555#372
Fax: +886-2-26498897
Email: joyce@cces.com.tw

Wood & Cloth
93 Nantien St.
Kaoshiung City, Taiwan
R.O.C.
Elaine Liu
Tel: +886-7-3303718
Fax: +886-7-5317916
Email: woodandcloth@gmail.com

UNITED KINGDOM & IRELAND

Behrens Fabrics
Centrepoint
Marshall Stevens Way
Trafford Park
Manchester
M17 1PP
Mr. Duncan Hough
Tel: +44-161-872-1444
Fax: +44-161-872-8002
Mob: 07808 786 060
Email: dthough@behrens.co.uk

← INK & ARROW →
FOR QT FABRICS



QTfabrics.com | 800.876.2756
an employee-owned company

