



New  
collections for  
Spring 2021

**makower uk**

Concord Fabrics UK Ltd

[www.makoweruk.com](http://www.makoweruk.com)



# Beside the Sea

makower uk  
Concord Fabrics UK Ltd



2338-1

Harbour



2339-Y

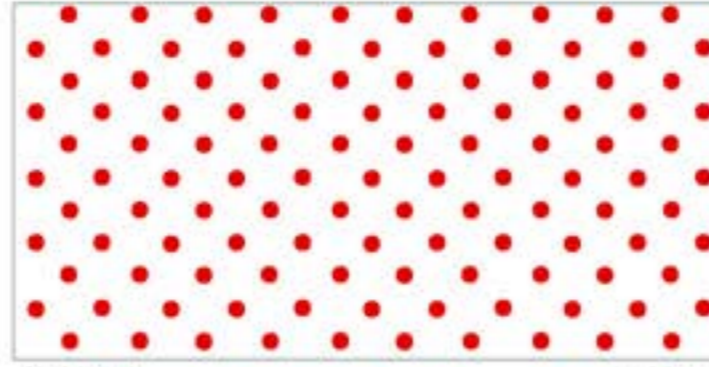
Icon Scatter



2339-B

Icon Scatter

## Spot co ords

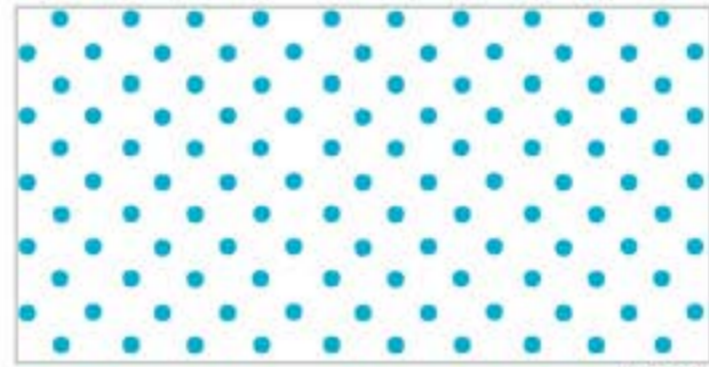


830-WR

\*NEW

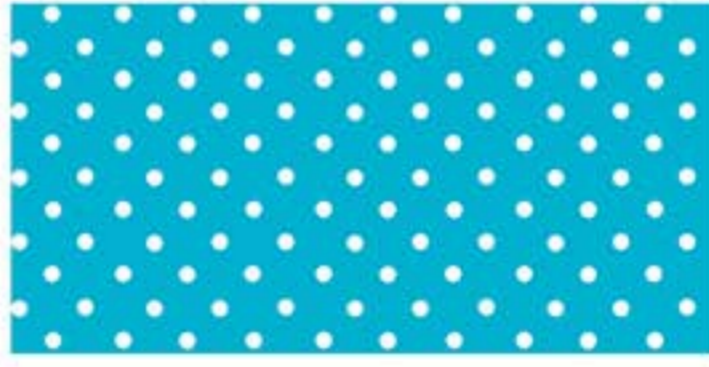


830-R



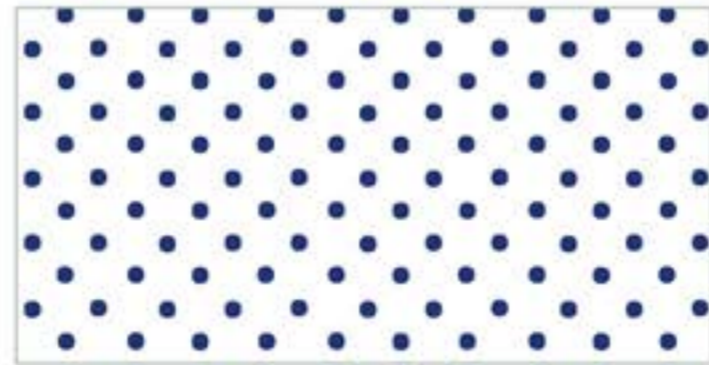
830-WT

\*NEW



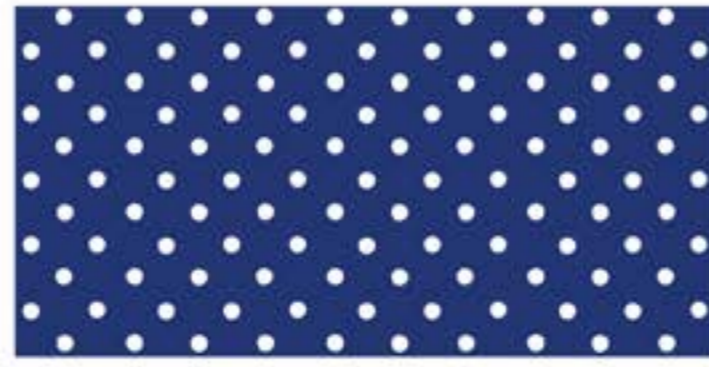
830-T5

\*NEW



830-WB9

\*NEW



830-B9

\*NEW



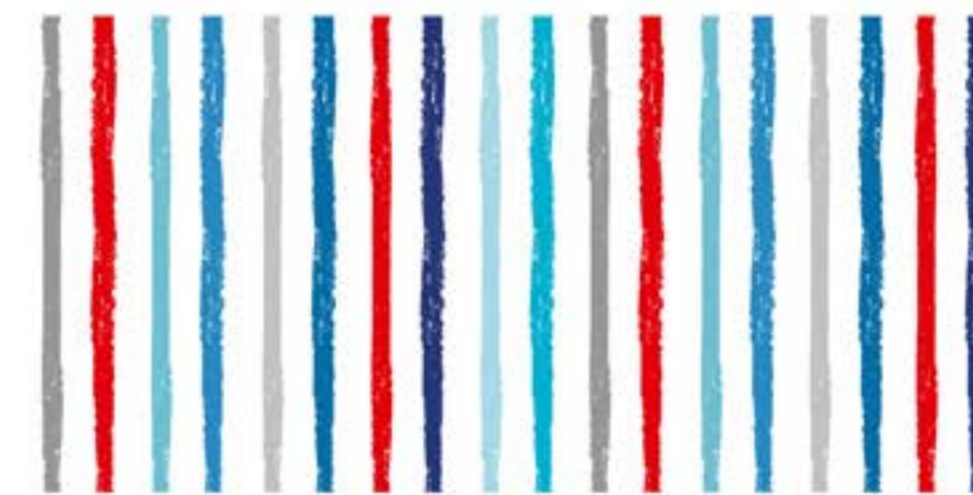
2340-B8

Sailboats



2340-B4

Sailboats



2347-WB

Chalky Stripe



2347-BB

Chalky Stripe



2345-W

Set Beach Huts



2345-B

Set Beach Huts

# Beside



2346-1

# the Sea Double Border



Reduced scale actual size of repeat 24" x 44" (60 x 112cm)

15 Sku's + 1 Panel  
Delivery Feb 21



2344-1

Clouds



2341-1

Beach Hut Scene



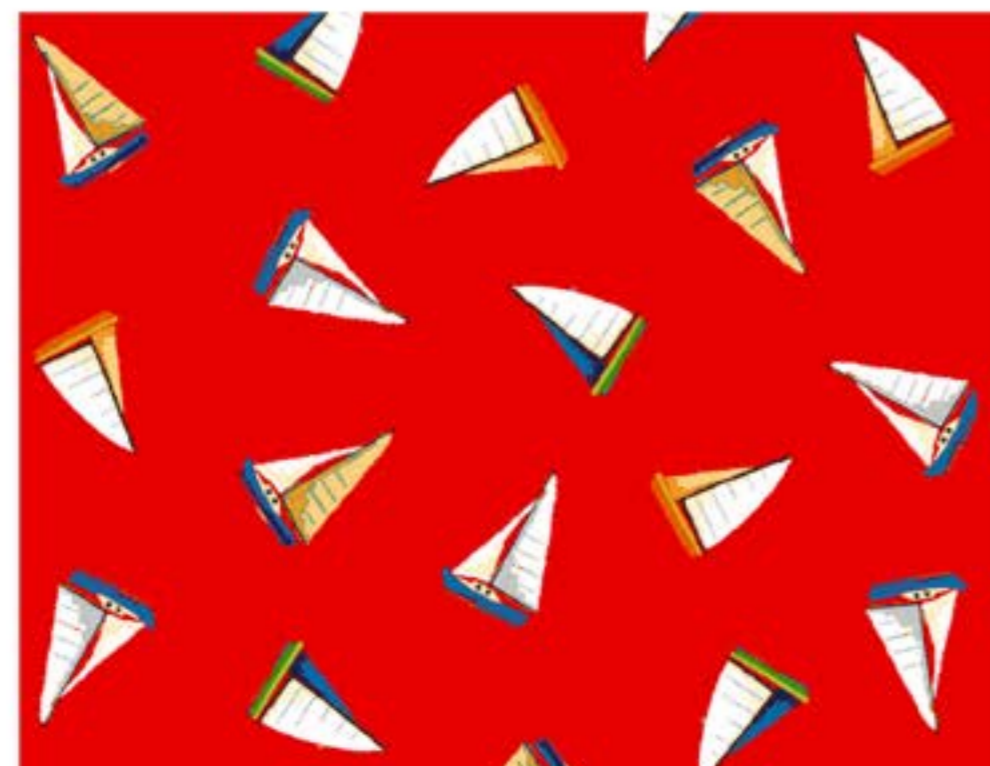
2342-W

Anchors



2342-B

Anchors



2343-R

Mini Boats



2343-S

Mini Boats

**makower uk**  
Concord Fabrics UK Ltd



View A

Messenger Bag

View B



View A

Everyday Patchwork Bag

View B



Dorothy Dress



Rosie Dress



Lillia Rae Dress

Email:contact@makoweruk.com

Visit:www.makoweruk.com

# Beside The Sea

Delivery February 2021

Please visit [www.makoweruk.com](http://www.makoweruk.com) for details of fabric collections.  
Full instructions for projects available February 2021.  
Please do not kit from fabric requirements

## Beach Bag and Coordinating Pouch Instructions

Designed by Janet Goddard [www.patchworkpatterns.co.uk](http://www.patchworkpatterns.co.uk)  
Finished Bag Size 22" x 18" x 5" (56cm x 46cm x 13cm) excluding handles  
Finished Zipped Pouch Size 7" x 5" (18cm x 14cm)

### Fabric Requirements

Fabric	Design	Useage	Amount
Fabric One	2346/1 Border	Outer bag and fabric handles	90cms / 1yd
Fabric Two	2342/B Anchor	Outer Bag Base	25cm / 10"
Fabric Three	2339/B Icon Scatter	Lining and Pouch Strap	75cms / 30"
Fabric Four	2345/B Set Beach Huts	Pouch and Tag	Fat 1/4 th
Fabric Five	2347/BB Chalky Syripe	Pouch Lining	Fat 1/4 th

## Messenger Bag Free Download

Designed by Janet Goddard [www.patchworkpatterns.co.uk](http://www.patchworkpatterns.co.uk)  
Finished Size 12" x 12" x 3" (30cm x 30cm x 7.5cm) excluding strap

### Fabric Requirements

Fabric	Useage	View A	View B	Amount
Fabric One	Outer bag,	2345/B	2345/W	45cms (18")
Fabric Two	Flap	2340/B4	2340/B8	Fat 1/4
Fabric Three	Bag lining and pocket	830/R	830/R	65cms (25")
Fabric Four	Strap loops and strap	2347/BB	830/B9	20cms (8")

## Every Day Patchwork Bag Free Download

Designed by Janet Goddard [www.patchworkpatterns.co.uk](http://www.patchworkpatterns.co.uk)  
Finished Size 12" x 12" x 3 1/2" (30cm x 30cm x 9cm) excluding handle

### Fabric Requirements

Fabric	Useage	View A	View B	Amount
Fabric One	Patchwork	2343/S	2343/R	25cms (10")
Fabric Two	Patchwork	2342/B	2342/W	25cms (10")
Fabric Three	Outer Bag base	2347/BB	2347/WB	Fat 1/4
Fabric Four	Lining and inside pocket	830/R	830/B9	50cms (20")
Fabric Five	Strap loops and strap	830/B9	830/R	20cms (8")

## Girls Dresses up to 12yrs by Bobbins & Buttons

For wholesale pricelist and information on how to become a stockist please contact: Julia Claridge:  
Bobbins & Buttons : 07791 966917  
Email: [julia@bobbinsnbuttons.co.uk](mailto:julia@bobbinsnbuttons.co.uk)

### Fabric Requirements

Style	Fabric	Amount
Dorothy Dress	2346/1 Border	1.5m
Dorothy Sash	2347/WB Chalky Stripe	0.5m
Rosie Dress	2341/1 Beach Huts	1m
Rosie Reverse	2343/R Mini Boats	1m
Lillia Rae Dress	2339/B Icon Scatter	1m

Call:+44(0)1628 509640

# Katie's Cats



2348-Q Cats Allover



2349-B Scattered Cats



2351-Q Ditzzy Flower



2347-Q \*No metallic Chalky Stripe



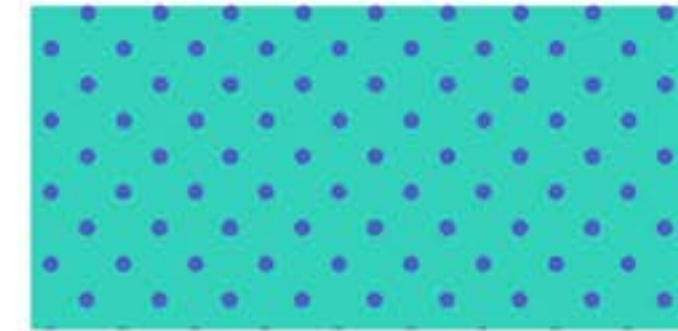
2350-Q Hearts

# Katie's Cat Panel



2352-1 Reduced scale actual size 24" x 44" (60 x 112cm)

# New Colour Sp



830-TB



830-YN



830-NY



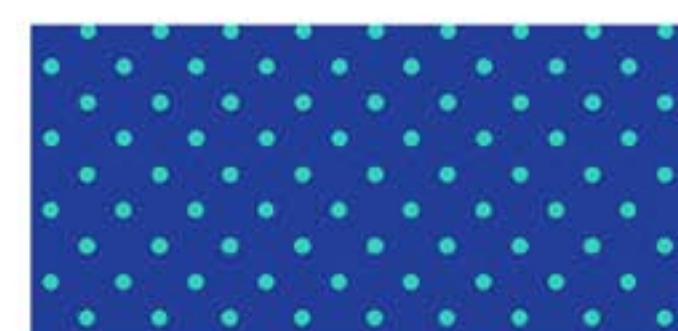
830-GY



830-PL



830-LP



830-BT

ot

All with metallic gold\*

11 Sku's + 1 Panel  
Delivery Feb 21

**makower uk**  
Concord Fabrics UK Ltd

# Katie's Cats

## Delivery February 2021

Please visit [www.makoweruk.com](http://www.makoweruk.com) for details of fabric collections.  
Full instructions for projects available February 21.  
Please do not kit from fabric requirements

Quilt will feature in British P&Q and PW Magazin Germany Spring 21



### Quilt Free Download

Finished size 60" x 60" (152cm x 152cm)  
by Lynne Goldsworthy of [lilysquilts.blogspot.com](http://lilysquilts.blogspot.com)

Fabric Requirements

Design	Useage	Amount
830/GY Spot	Blocks	60cm / 24"
830/LP Spot	Blocks	30cm / 12"
830/NY Spot	Blocks	40cm / 15"
830/PL Spot	Blocks	FQ
830/TB Spot	Blocks	75cms / ¾ yd
2347/S Chalk Stripe	Binding	50cms / ½ yd
2348/Q Cats Allover	Blocks Backing	40cm / 15" 3.5m / 3 ¾ yds
2348/S Cats Allover	Blocks	FQ
2349/B Scattered Cats	Blocks	30cm / 12"
2349/Q Scattered Cats	Blocks	FQ
2349/Y Scattered Cats	Blocks	40cm / 15"
2350/Q Hearts	Blocks	40cm / 15"
2352/1 Panel	Blocks	One panel
2000/W01 Spectrum	Background (BKG)	1.75 m / 2yds

### Messenger Bag Free Download

Designed by Janet Goddard [www.patchworkpatterns.co.uk](http://www.patchworkpatterns.co.uk)  
Finished Size 12" x 12" x 3" (30cm x 30cm x 7.5cm) excluding strap

Fabric Requirements

Fabric	Useage	Design	Amount
Fabric One	Outer bag,	2351/S	45cms (18")
Fabric Two	Flap	2348/S	Fat ¼
Fabric Three	Bag lining and pocket	2350/S	65cms (25")
Fabric Four	Strap loops and strap	2347/S	20cms (8")

### Every Day Patchwork Bag Free Download

Designed by Janet Goddard [www.patchworkpatterns.co.uk](http://www.patchworkpatterns.co.uk)  
Finished Size 12" x 12" x 3 ½" (30cm x 30cm x 9cm) excluding handle

Fabric Requirements

Fabric	Useage	Design	Amount
Fabric One	Patchwork	2349/B	25cms (10")
Fabric Two	Patchwork	2349/Q	25cms (10")
Fabric Three	Outer Bag base	2348/Q	Fat 1/4
Fabric Four	Lining and inside pocket	2347/Q	50cms (20")
Fabric Five	Strap loops and strap	830/BT	20cms (8")

### Girls Dresses up to 12yrs by Bobbins & Buttons

For wholesale pricelist and information on how to become a stockist and please contact:  
Julia Claridge: Bobbins & Buttons : 07791 966917  
Email: [julia@bobbinsbuttons.co.uk](mailto:julia@bobbinsbuttons.co.uk)

Fabric Requirements

Style	Dress	Approx Amount
Dorothy Dress	2348/Q Cats Allover	1.5m
Dorothy Sash	2347/Q Chalky Stripe	0.5m
Rosie Dress	2349/Y Scattered Cats	1m
Rosie Reverse	2350/Q Hearts	1m
Lillia Rae Dress	2351/Q Ditzy Flowers	1m



2348-S Cats Allover



2349-Y Scattered Cats



2347-S \*No metallic Chalky Stripe



2350-S Hearts



2351-S Ditzy Flowers



2349-Q Scattered Cats



Messenger Bag



Everyday Patchwork Bag



Dorothy Dress



Rosie Dress



Lillia Rae Dress

Email: [contact@makoweruk.com](mailto:contact@makoweruk.com)

Visit: [www.makoweruk.com](http://www.makoweruk.com)

Call: +44(0)1628 509640

## Michiko Panel



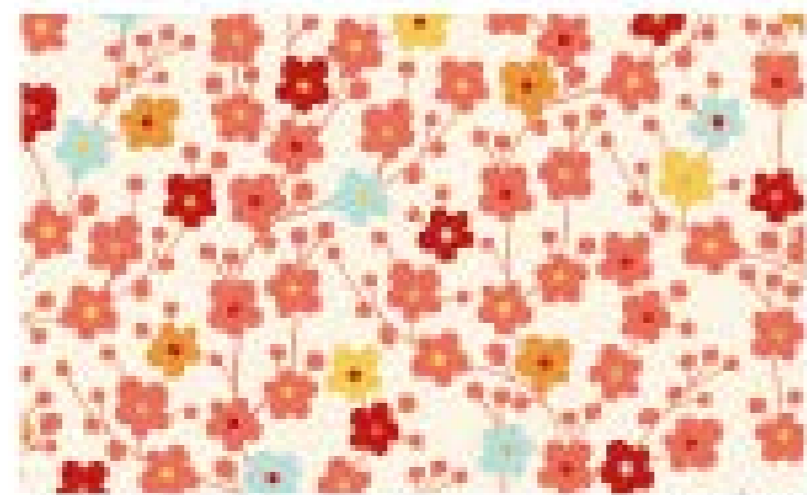
2330-B Large Floral



2331-R Cranes



2333-T Foliage



2335-Q Blossom



2337-1 Actual Panel size 24" x 44" (60 x 112 cm)

All with metallic gold



2332-B Koi



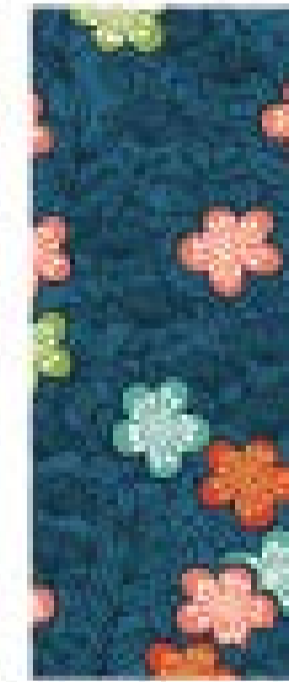
2332-Q



2336-R Bushclover



2336-Q Bushclover



2336-B



2334-Q Butterflies



2334-B

# Linen Texture



Koi



1473-T24 \*NEW



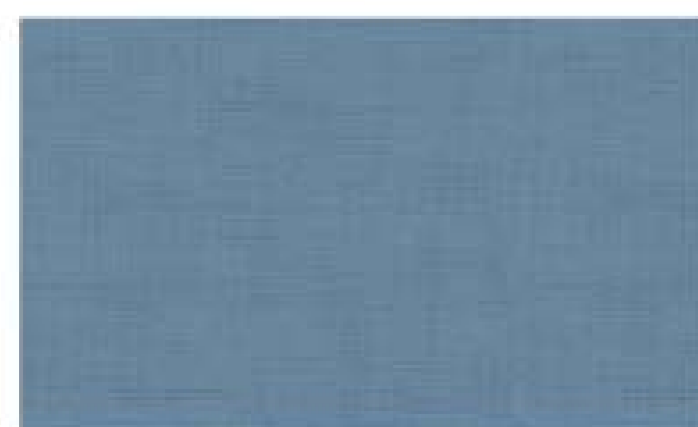
1473-Y22 \*NEW



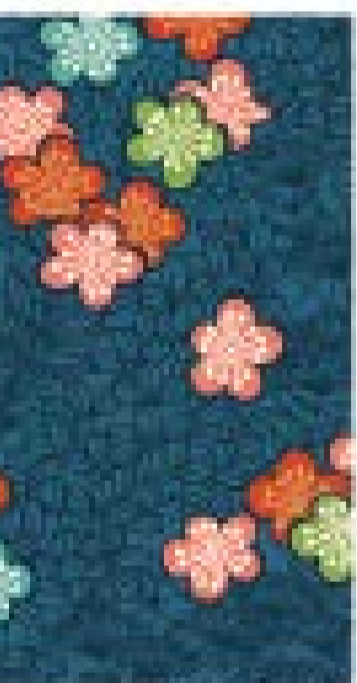
1473-P23 \*NEW



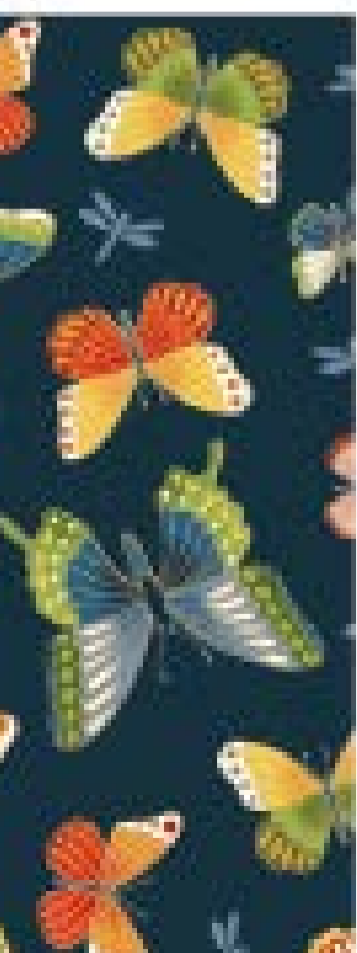
1473-C25 \*NEW



1473-B26 \*NEW



Bushclover



Butterflies



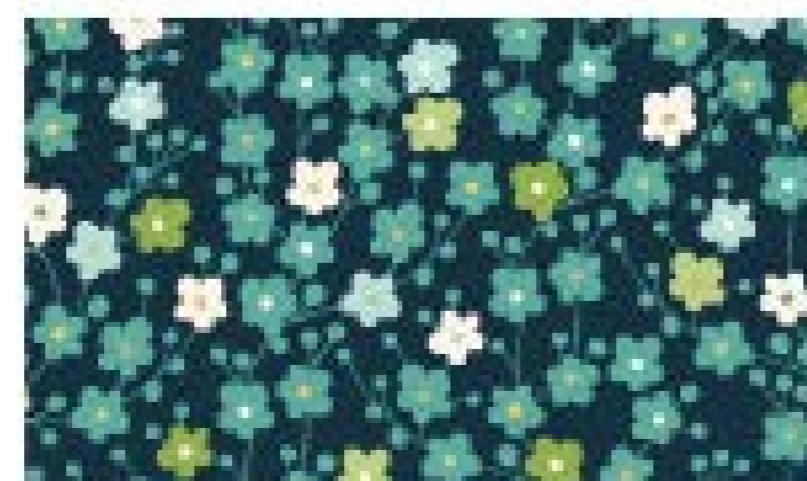
2330-T

Large Floral



2333-P

Foliage



2335-B

Blossom



2331-T

Cranes

15 Skus + 1 Panel  
Delivery Feb 21

# makower uk

Concord Fabrics UK Ltd

Quilt will feature in British P&Q Spring 2021



# Michiko

Delivery February 2021

Please visit [www.makoweruk.com](http://www.makoweruk.com) for details of fabric collections.  
Full instructions for projects available February 2021.  
Please do not kit from fabric requirements

## Quilt Free Download

Finished size 72" x 72" (183cm x 183cm)  
by Lynne Goldsworthy of [lilysquilts.blogspot.com](http://lilysquilts.blogspot.com)

Design	Useage	Amount
1473/B8 Linen Texture	Fan Bases	60cm / 24"
1473/B26 Linen Texture	Fans	F8th
1473/T24 Linen Texture	Background (BKG)	4.75 m / 5 1/4 yds
2330/ B & T Large Floral	Fans	FQ
2331/R Cranes	Fans Backing	FQ 4.5m / 4 1/2 yds
2331/T Cranes	Fans	40cm / 15"
2332/B Koi	Fans	FQ
2332/Q Koi	Fans	F8th
2333/P Foliage	Fans	F8th
2334/B Butterflies	Fans	FQ
2334/Q Butterflies	Fans	F8th
2335/B Blossom	Fans	F8th
2335/Q Blossom	Fans	FQ
2336/B Bushclover	Fans	FQ
2336/Q Bushclover	Fans	F8th
2336/R Bushclover	Fans Binding	FQ 50cm / 1/2 yd

## Messenger Bag Free Download

Designed by Janet Goddard [www.patchworkpatterns.co.uk](http://www.patchworkpatterns.co.uk)  
Finished Size 12" x 12" x 3" (30cm x 30cm x 7.5cm) excluding strap

Fabric	Useage	Design	Amount
Fabric One	Outer bag,	2331/T	45cms (18")
Fabric Two	Flap	2330/B	Fat 1/4
Fabric Three	Bag lining and pocket	2336/R	65cms (25")
Fabric Four	Strap loops and strap	2335/B	20cms (8")

## Every Day Patchwork Bag Free Download

Designed by Janet Goddard [www.patchworkpatterns.co.uk](http://www.patchworkpatterns.co.uk)  
Finished Size 12" x 12" x 3 1/2" (30cm x 30cm x 9cm) excluding handle

Fabric	Useage	Design	Amount
Fabric One	Patchwork	2336/B	25cms (10")
Fabric Two	Patchwork	2333/P	25cms (10")
Fabric Three	Outer Bag base	2334/B	Fat 1/4
Fabric Four	Lining and inside pocket	2335/Q	50cms (20")
Fabric Five	Strap loops and strap	2336/R	20cms (8")



Messenger Bag



Everyday Patchwork Bag

## Pamper Blocks

All with metallic gold



2309-1

Shopfronts



Actual scale of blocks



2318-1

Reduced to show full width repeat, actual size 44" x 24" (112 x 60cm)

Pamper Blocks



2316-W

Handbags



2316-S

Handbags



2311-P

Shoes



2312-W

Lips



2313-S

Floral



2316-R

Hearts



2315-W

Hearts



2314-P

Makeup



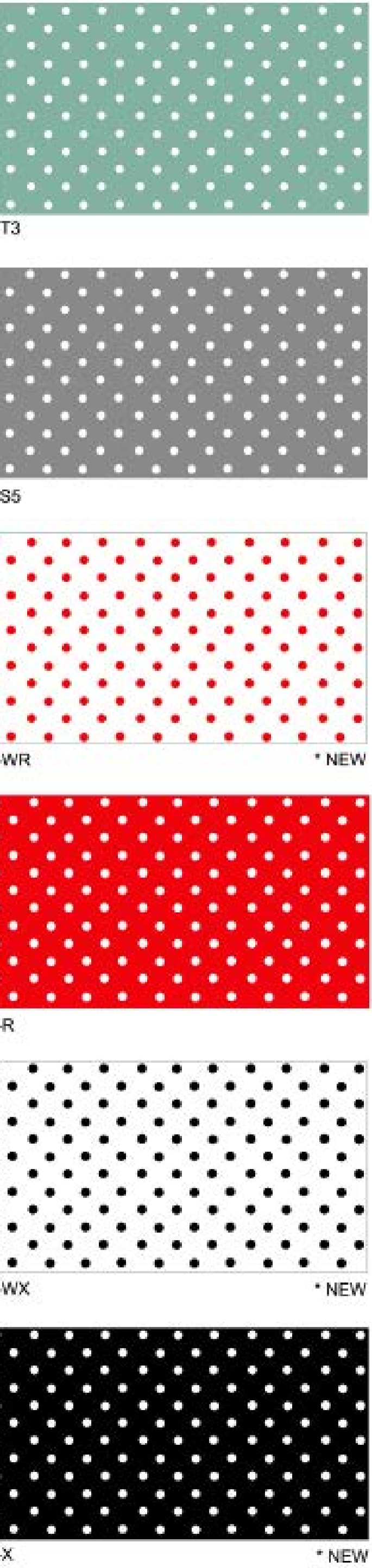
2314-S

Makeup





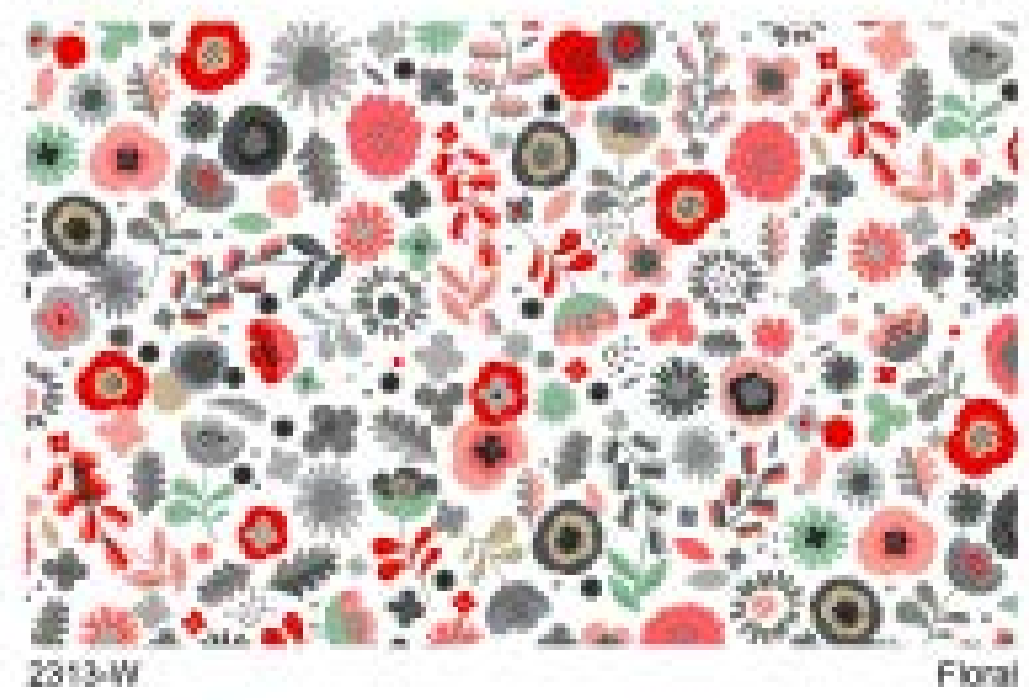
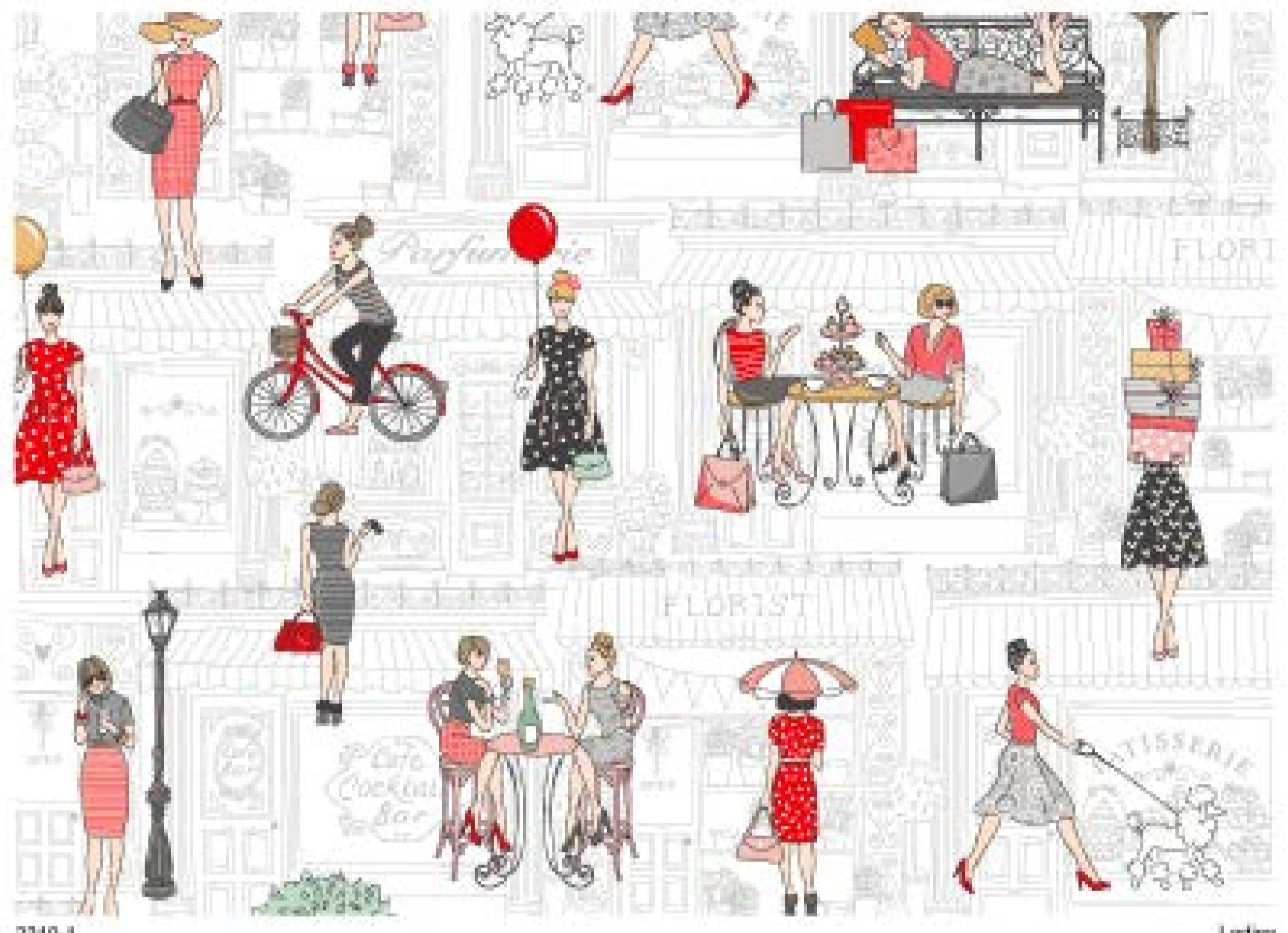
Spot co ordinates



Pamper Double Border



14 Sku's + 2 Panels  
Delivery Feb 21



makower uk  
Concord Fabrics UK Ltd



Pamper  
Delivery February 2021

Please visit [www.makoweruk.com](http://www.makoweruk.com) for details of fabric collections. Full instructions for projects available February 2021. Please do not kit from fabric requirements

Quilt Free Download

Finished size 68" x 68" (173cm x 173cm)  
by Lynne Goldsworthy of [lilysquits.blogspot.com](http://lilysquits.blogspot.com)

Fabric Requirements

Design	Usage	Amount
830/WX Spot	Diamonds	75 cm / ¾ yd
830/X Spot	Binding	50cms / ½ yd
2310/1 Ladies	Backing	4m / 4 ¼ yds
2311/P Shoes	Diamonds	60cms / 24"
2312/W Lips	Diamonds	60cms / 24"
2313/S Floral	Diamonds	75cm / ¾ yd
2314/S Make Up	Diamonds	60cms / 24"
2315/R Hearts	Diamonds	60cms / 24"
2315/W Hearts	Diamonds	75cm / ¾ yd
2316/S Handbags	Diamonds	75cm / ¾ yd
2318/1 Blocks Panel	Diamonds	60cms / 24"

Beach Bag and Coordinating Pouch Instructions

Designed by Janet Goddard [www.patchworkpatterns.co.uk](http://www.patchworkpatterns.co.uk)  
Finished Bag Size 22" x 18" x 5" (56cm x 46cm x 13cm) excluding handles  
Finished Zipped Pouch Size 7" x 5" (18cm x 14cm)

Fabric Requirements

Fabric	Design	Usage	Amount
Fabric One	2317/1 Border	Outer bag and fabric handles	90cms / 1yd
Fabric Two	2313/S Floral	Outer Bag Base	25cm / 10"
Fabric Three	2316/W Handbags	Lining and Pouch Strap	75cms / 30"
Fabric Four	2315/R Hearts	Pouch and Tag	Fat ¼ th
Fabric Five	2312/W Lips	Pouch Lining	Fat ¼ th



Beach Bag and Pouch



Dorothy Dress

Rosie Dress

Lillia Rae Dress

Girls Dresses up to 12yrs by Bobbins & Buttons

For wholesale price list and information on how to become a stockist please contact: Julia Claridge: Bobbins & Buttons : 07791 966917 Email: [julia@bobbinsnbuttons.co.uk](mailto:julia@bobbinsnbuttons.co.uk)

Fabric Requirements

Style	Design	Approx Amount
Dorothy Dress	2317/1 Border	1.5m
Dorothy Sash	2315/R Hearts	0.5m
Rosie Dress	2309/1 Shop Fronts	1m
Rosie Reverse	2315/R Hearts	1m
Lillia Rae Dress	2313/W Floral	1m

Email: [contact@makoweruk.com](mailto:contact@makoweruk.com)

Visit: [www.makoweruk.com](http://www.makoweruk.com)

Call: +44(0)1628 509640

# Summer Garden

makower uk

Concord Fabrics UK Ltd



Rose Bouquet

2320-R



Packed Rose

2321-P



Rose Bud

2322-R



Packed Rose

2321-R



Daffodil

2324-I



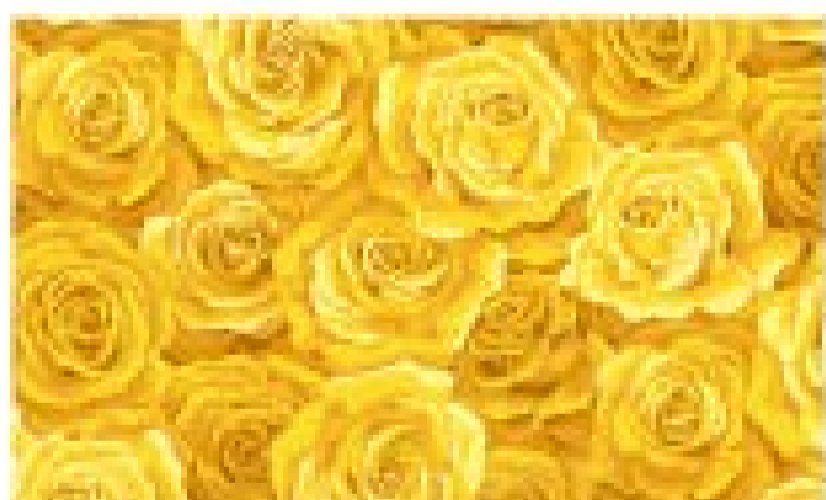
Daisy



Daisy



Daisy



Packed Rose

2321-Y



Rose Bud

2322-Y



Rose Bouquet

2320-Y



Pansy

2325-L



Pansy

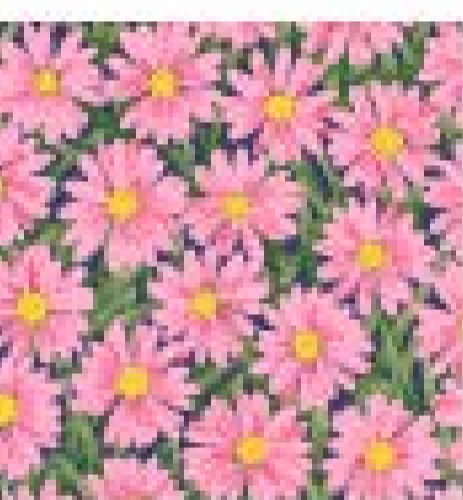
# Spraytime co ords



2326-W



2326-L



2326-P



2325-B



2800-P31



2800-L84



2800-B15



2800-P54

\*New



2800-P87



2800-Y08



2800-G46



Petunia

2327-P



Petunia

2327-B



Blossom

2328-W



Blossom

2328-B



Blossom

2328-P



Tulip

2329-Y



Tulip

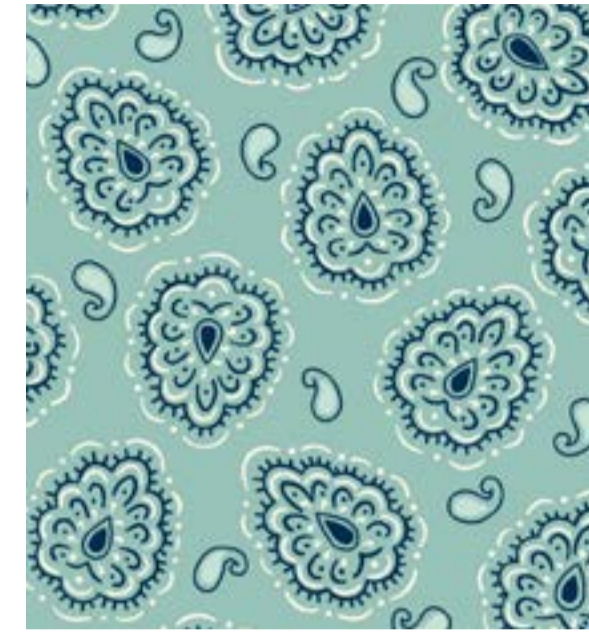
2329-P



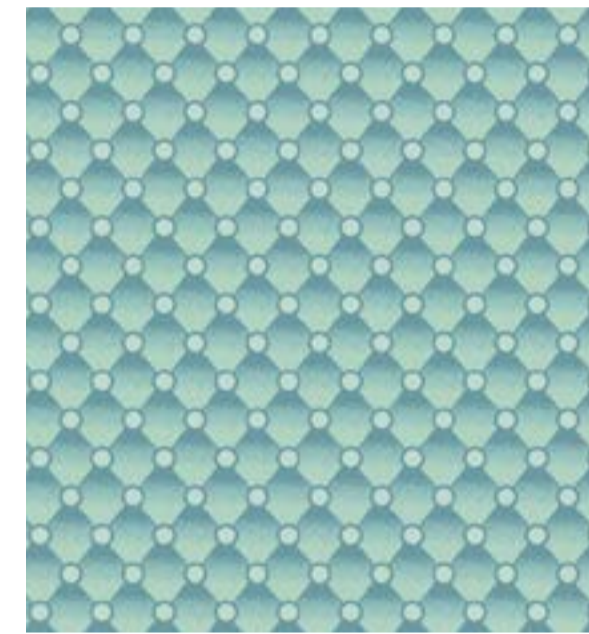
9716 T



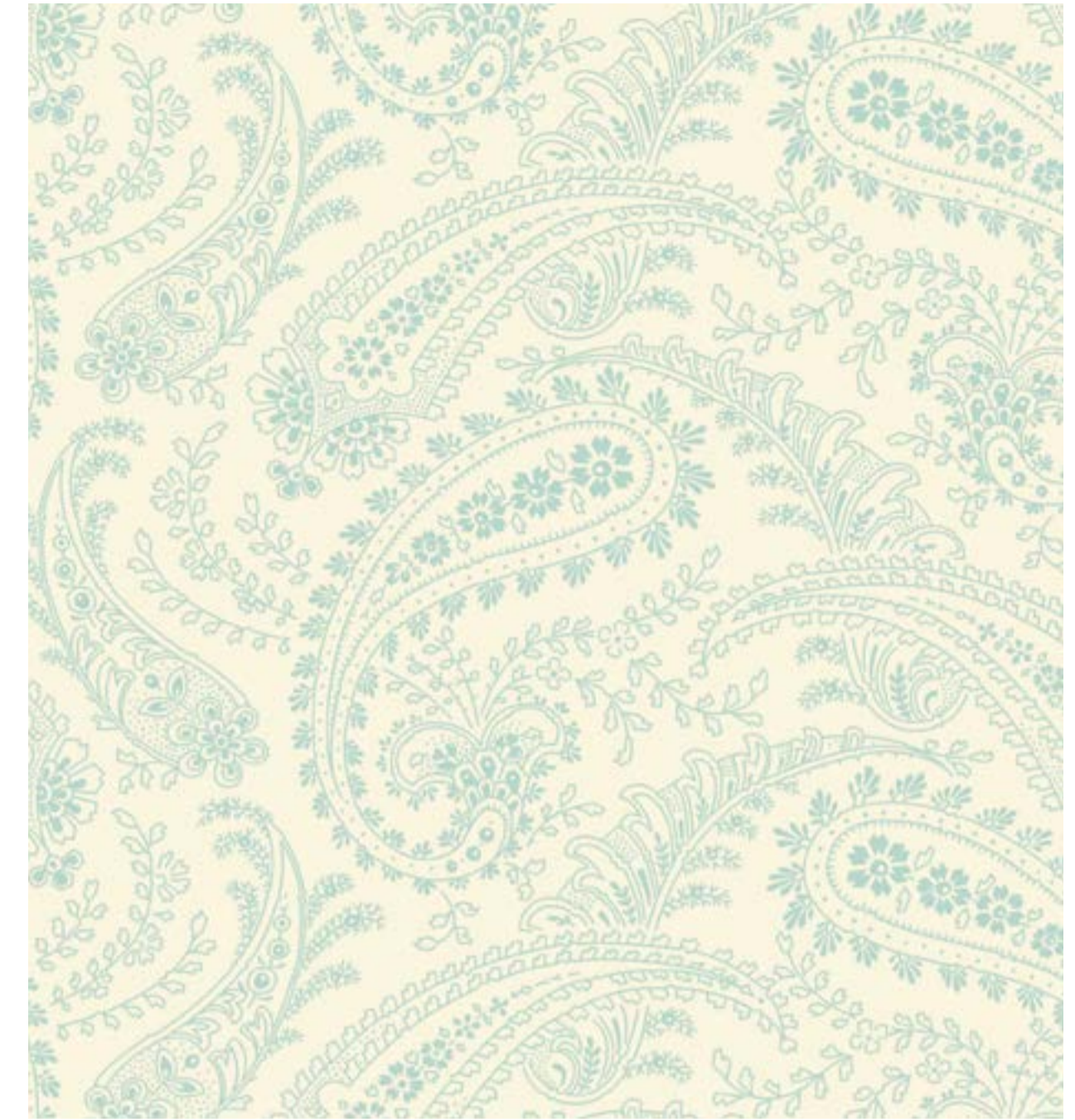
9717 T



9719 T



9724 T



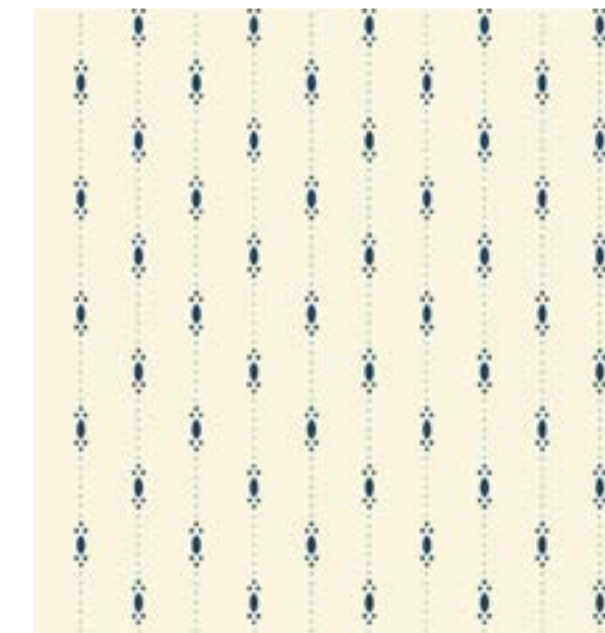
9720 L



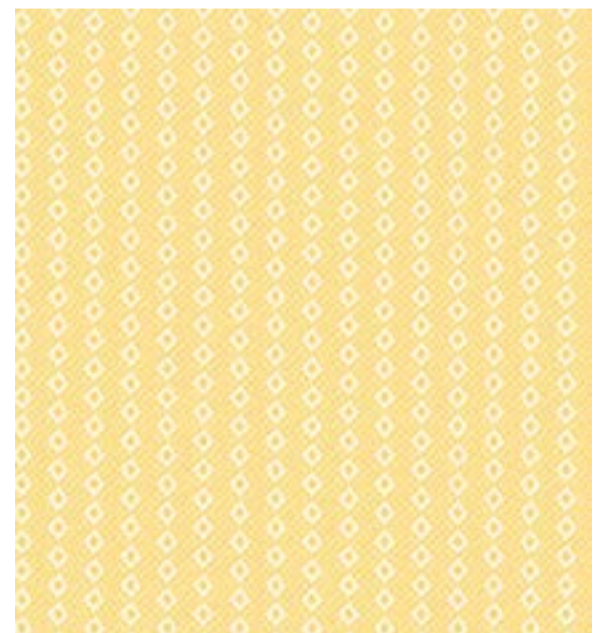
9723 T



9718 T



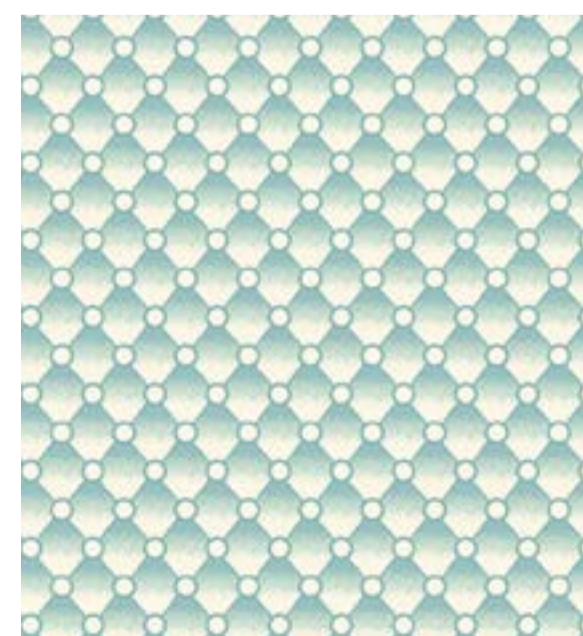
9725 L



9727 Y



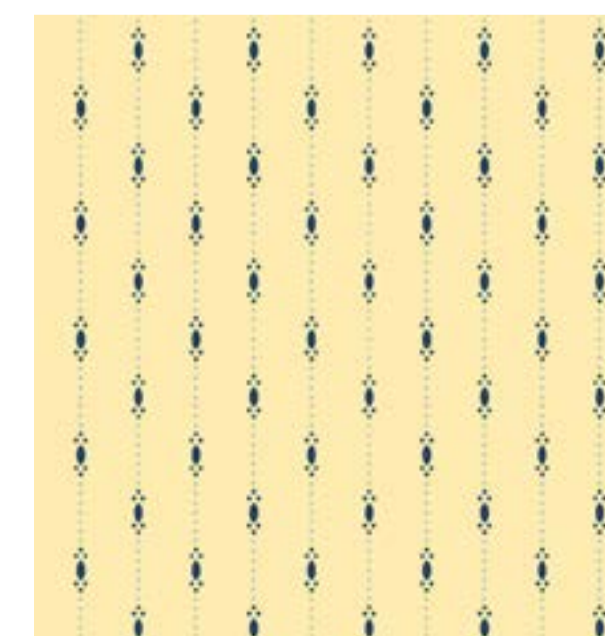
9718 T1



9724 L



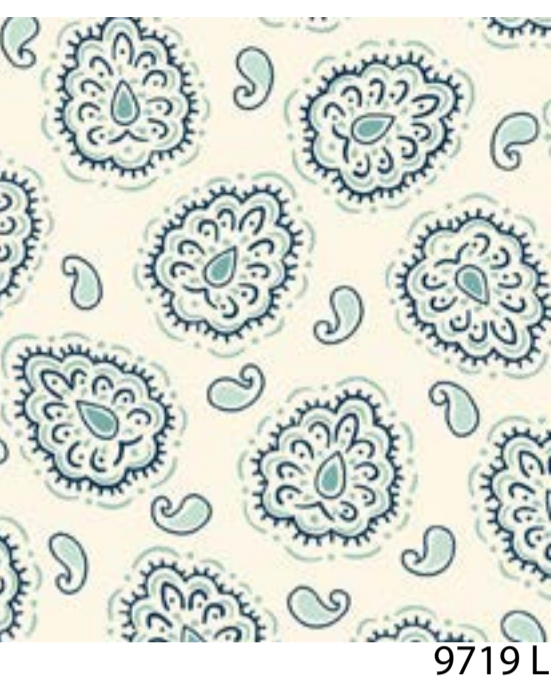
9723 L



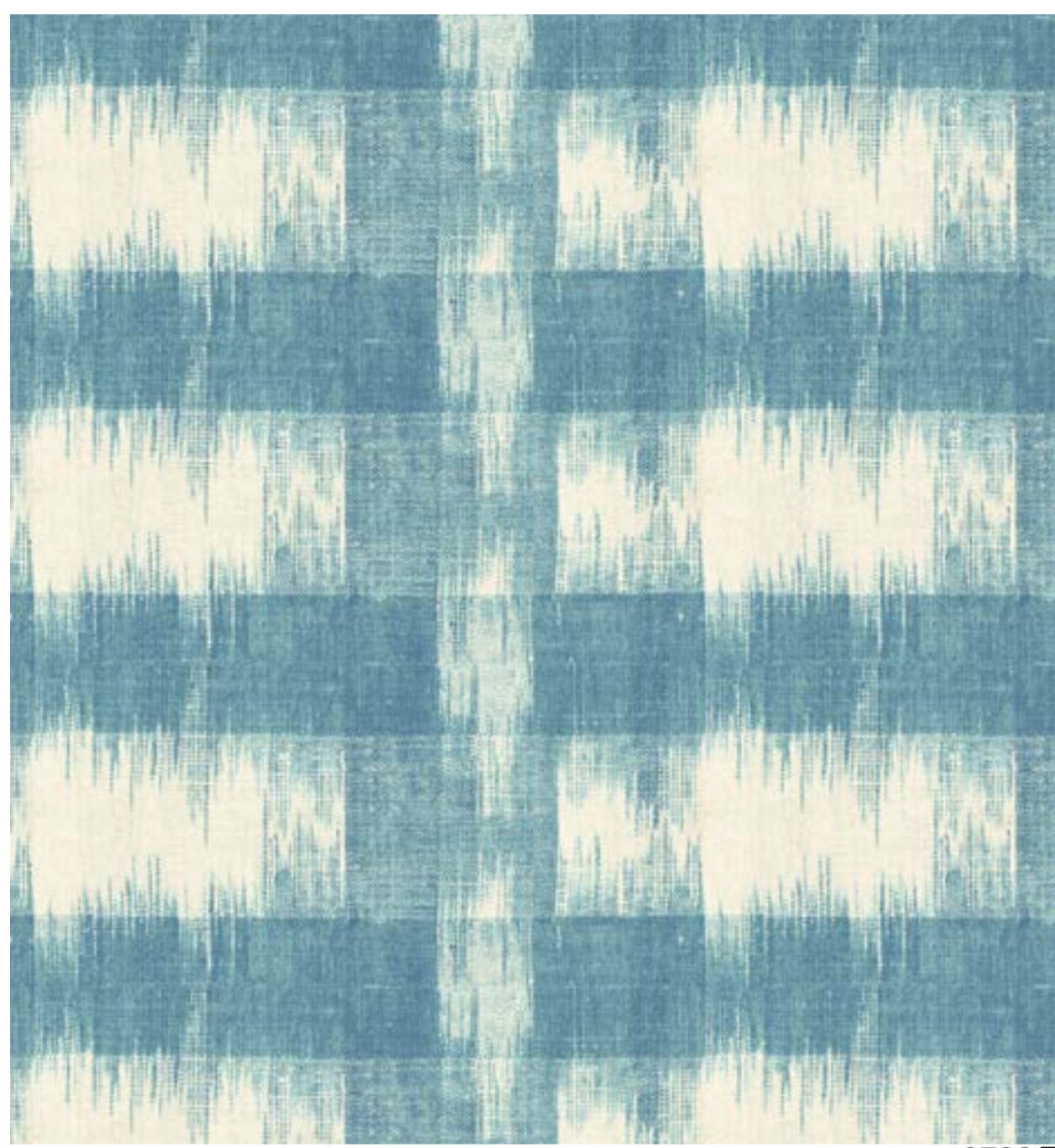
9725 Y



Love



9719 L



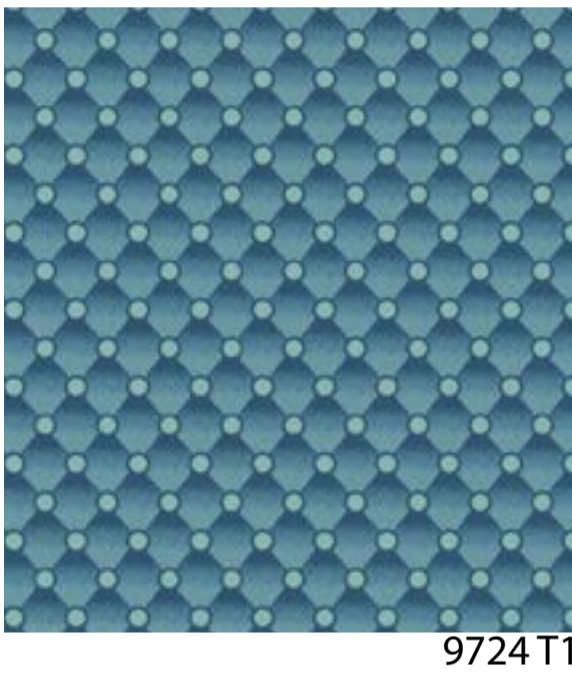
9722 T



9717 L



9721 L



9724 T1



9726 Y



9720 T



9721 B



9718 B



9717 Y



9723 B



9726 B



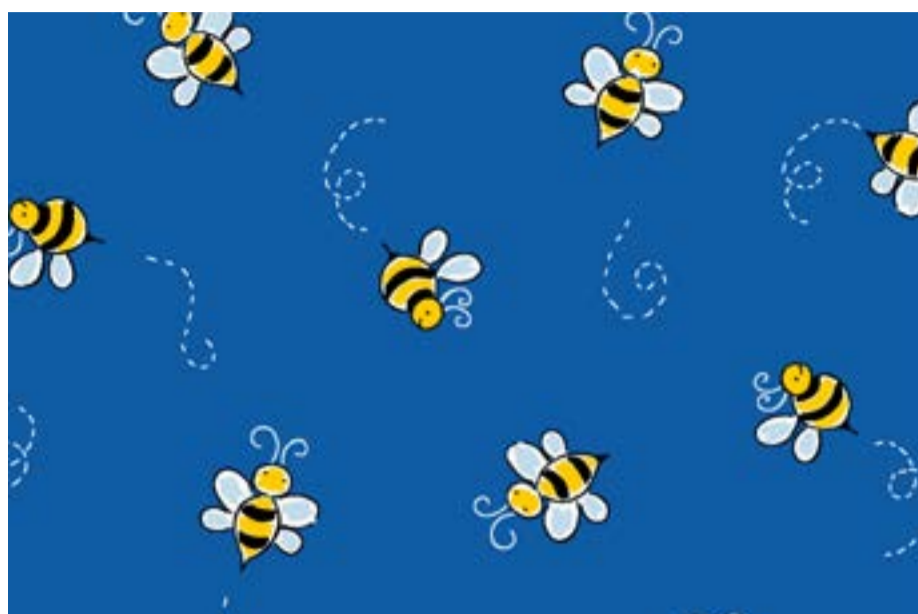
9727 B



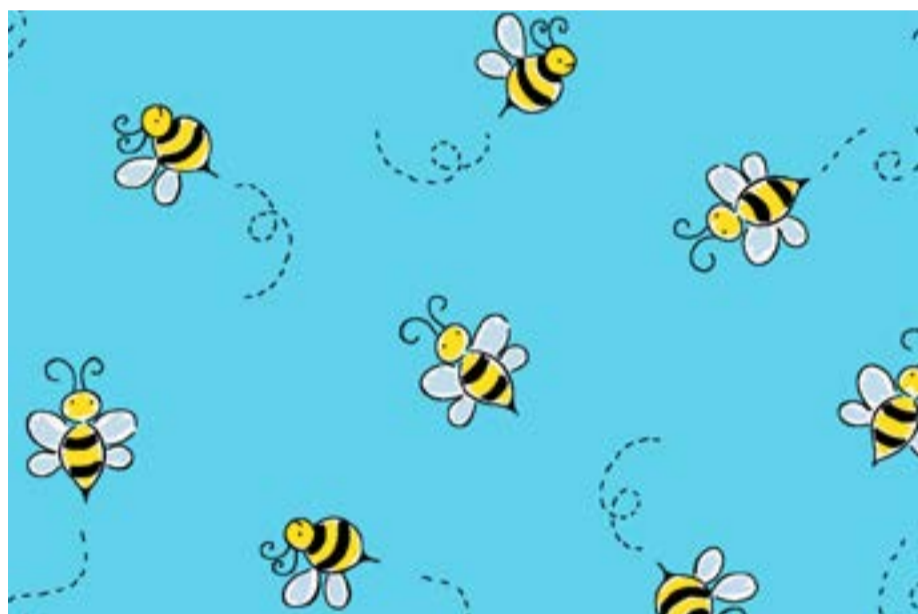
9722 B



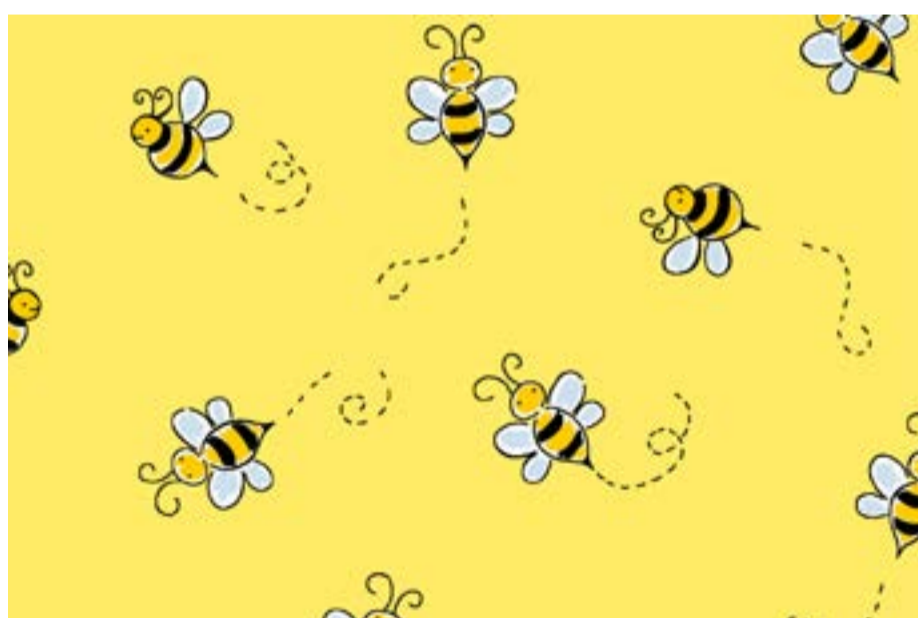
9716 B



B



T



Y



R

# le Bee

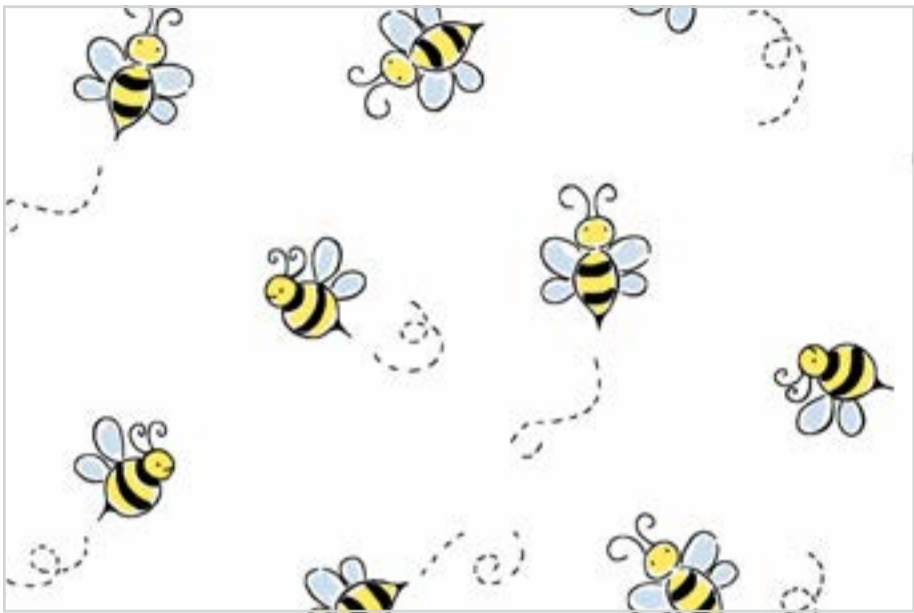
r Fabrics

umber: 9715

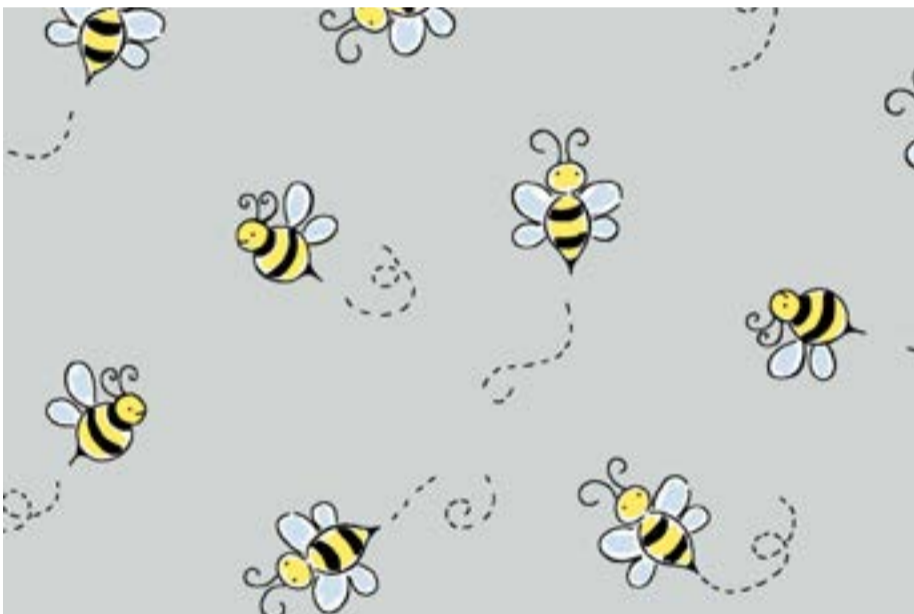
January 2021

8 SKUs

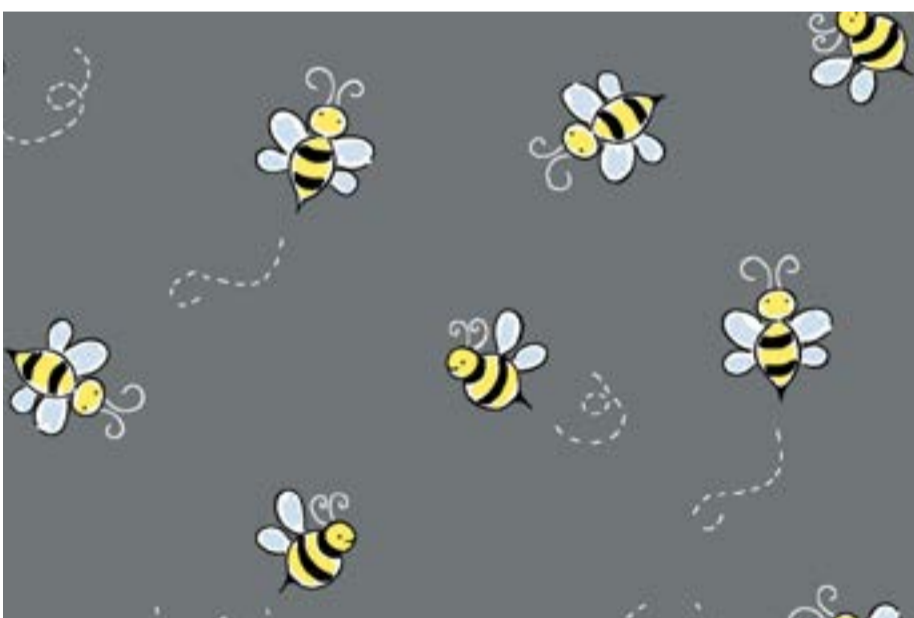
10m pieces only



L



C1



C



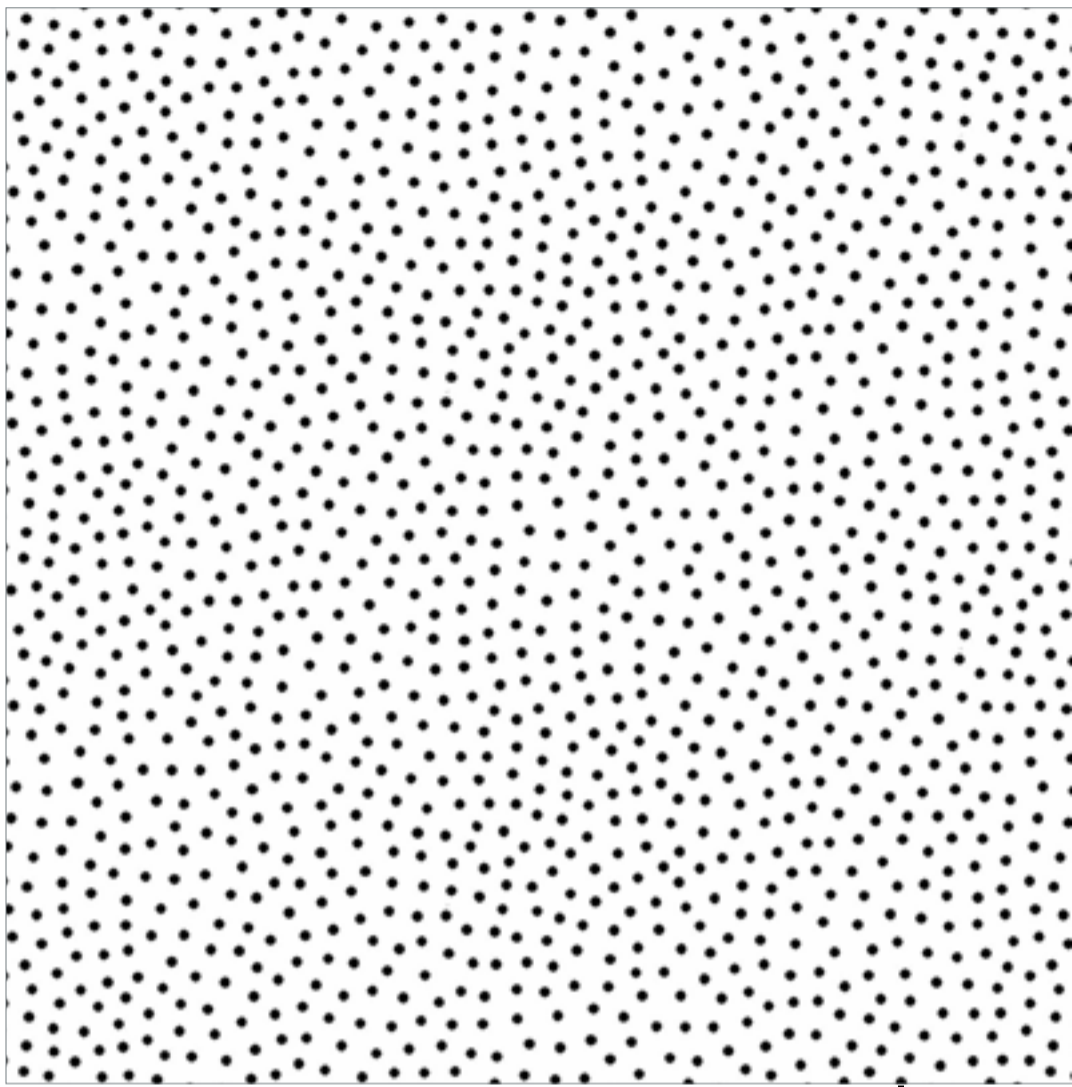
K



100 years

Freckle

Andover



Style Num



R



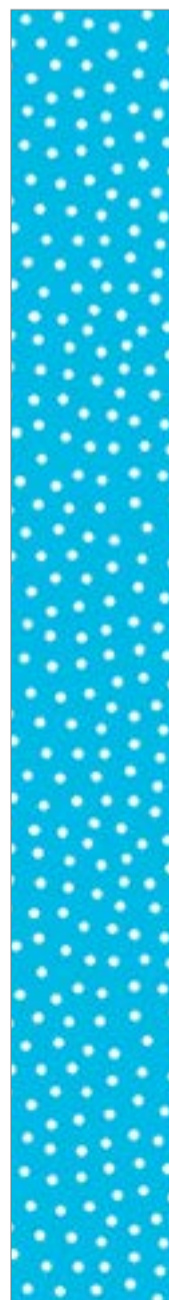
E



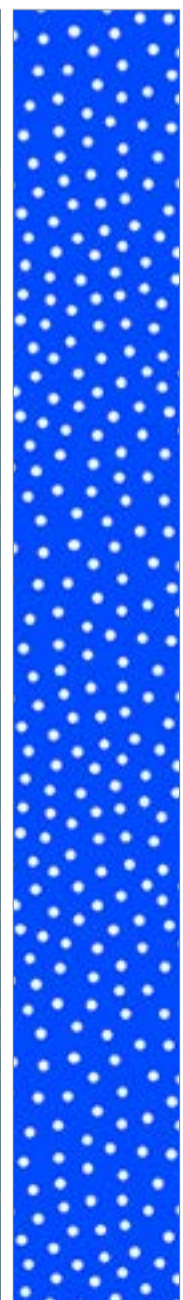
Y



T1



T



B1



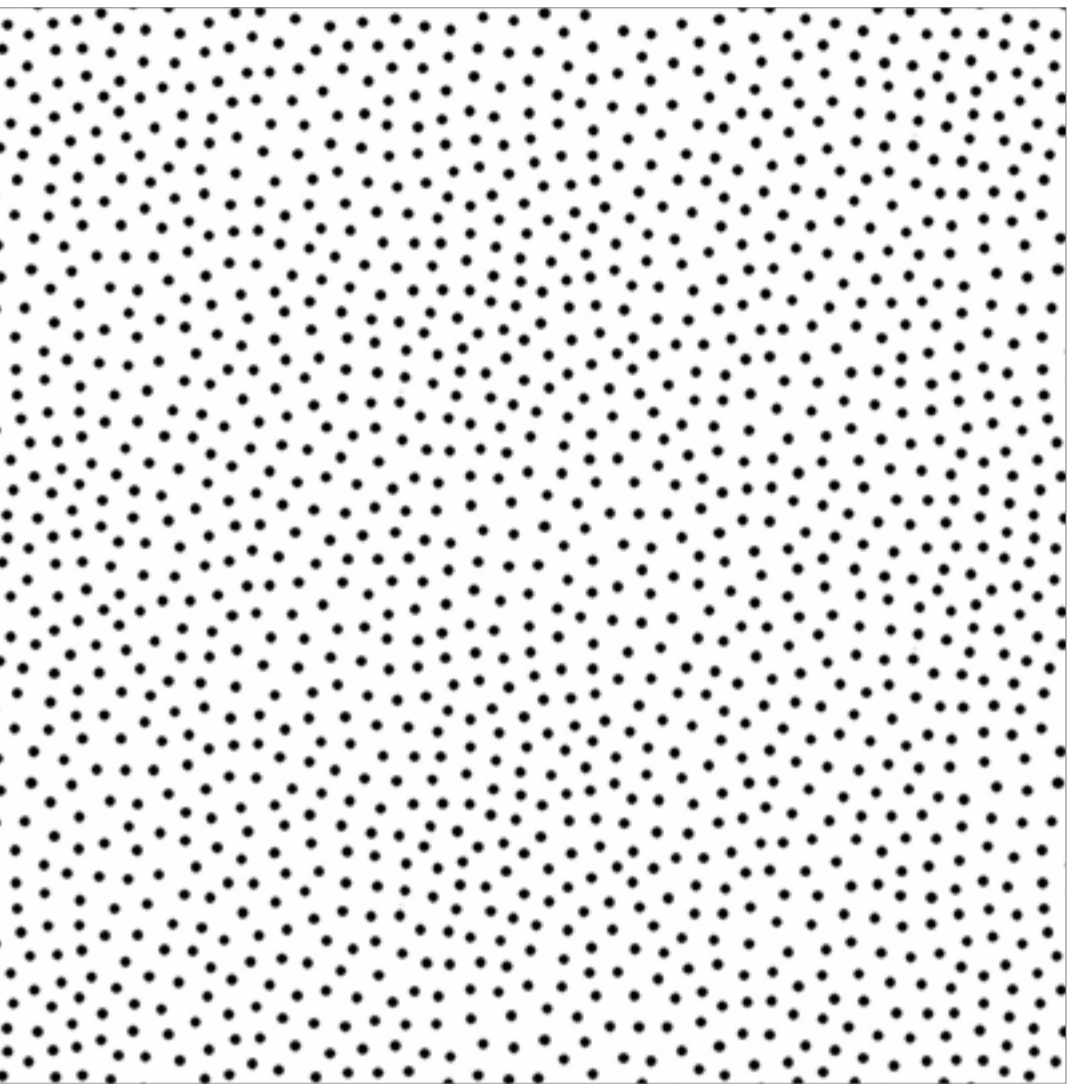
# le Dot

r Fabrics

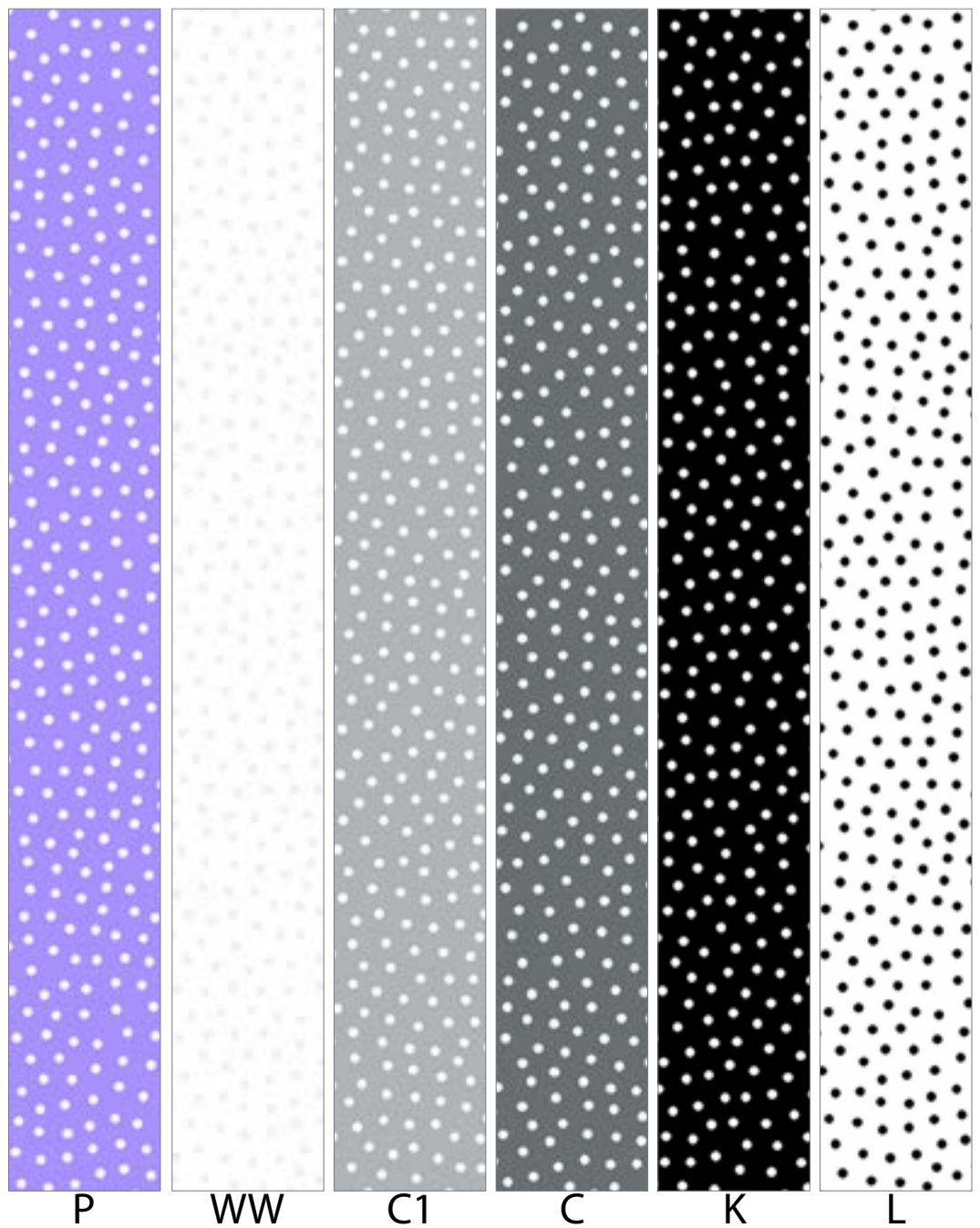
January 2021

8 SKUs

10m pieces only



Number: 9436



P

WW

C1

C

K

L

# French Chateau and Bee

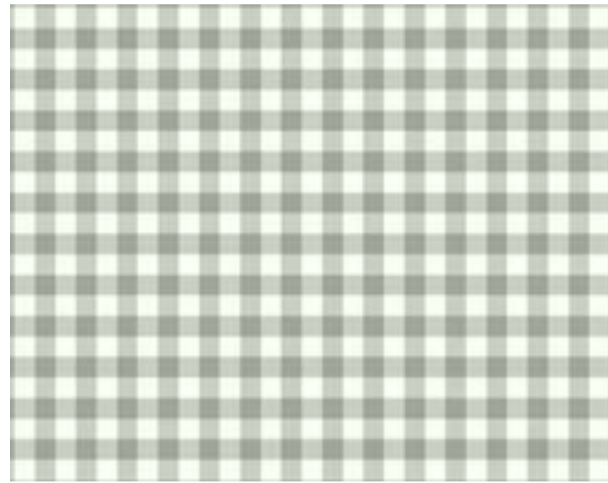
Renee Nanneman of Need'I Love



9084/LC1 Bees Wisp



9084/C1 Bees Pewter



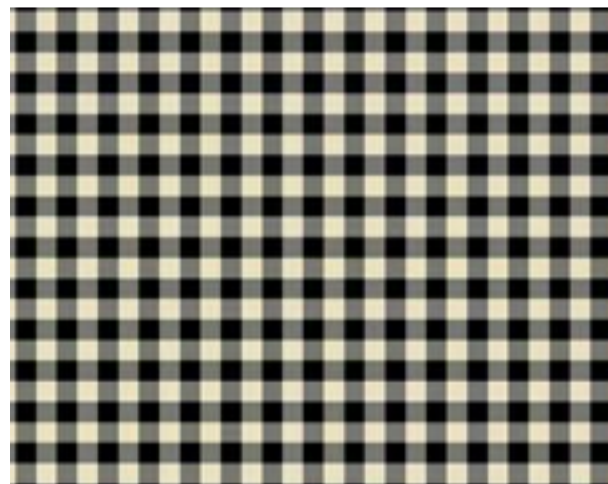
9092/C1 Gingham Smoke



9085/C1 Paisley Cloud



9084/K2 Bees Ink



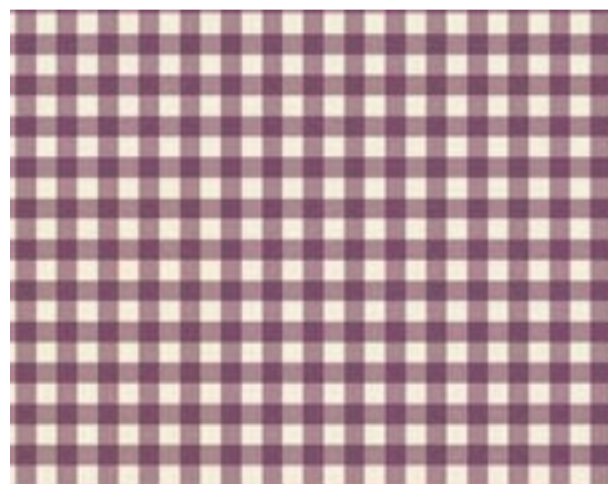
9092/K1 Gingham Raven



9085/LK1 Paisley Ebony & Ivory



9084/P2 Bees Ripe Plum



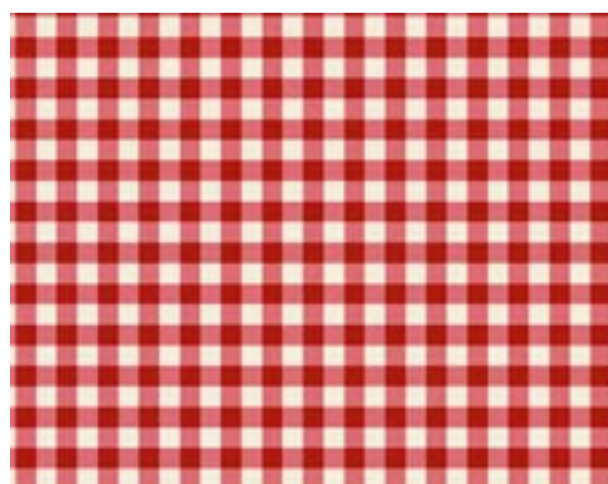
9092/P1 Gingham Heather



9085/P1 Paisley Imperial



9084/R2 Bees Cranberry



9092/R2 Gingham Cherry



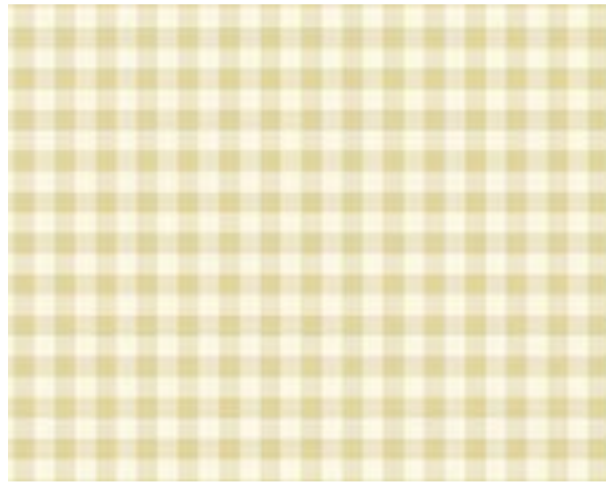
9085/RL Paisley Crimson Lace



9084/LN1 Bees Alabaster



9084/N3 Bees Biscotti



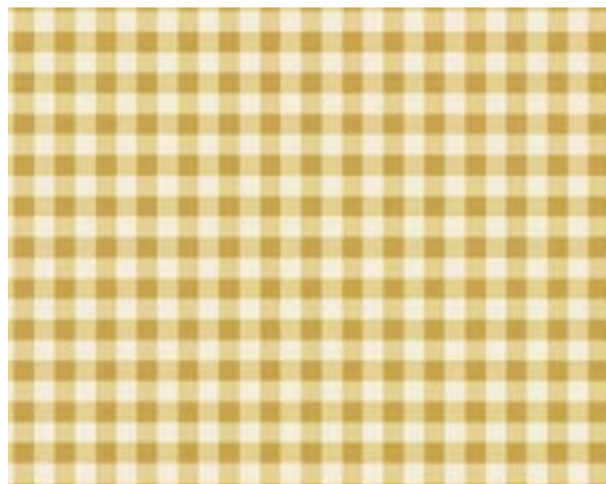
9092/N3 Gingham Sugar Cookie



9085/L3 Paisley Sand Dollar



9084/Y3 Bees Saffron



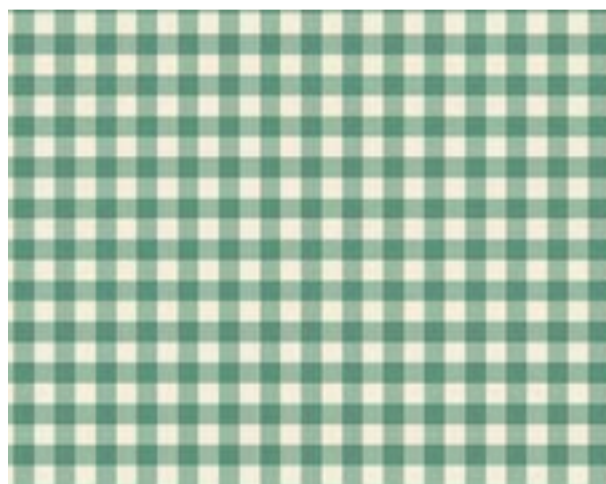
9092/Y1 Gingham Yarrow



9085/Y1 Paisley Golden



9084/G3 Bees Coastal



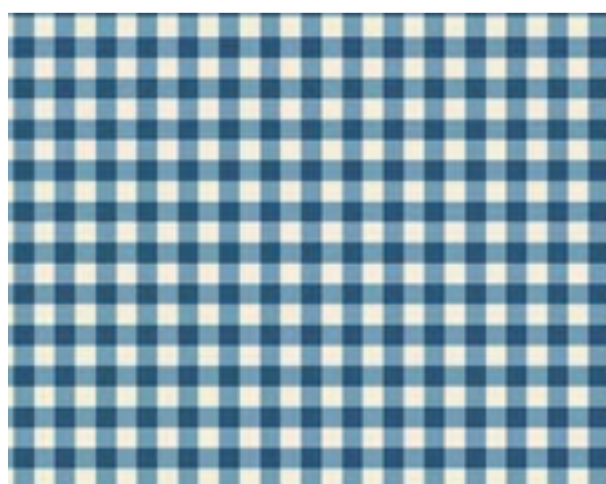
9092/G2 Gingham Aruba



9085/G2 Paisley Sea Spray



9084/B3 Bees Indigo



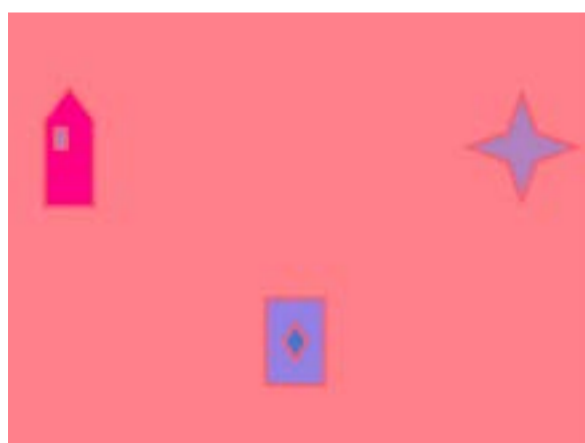
9092/B2 Gingham Sky



9085/B1 Paisley Lake



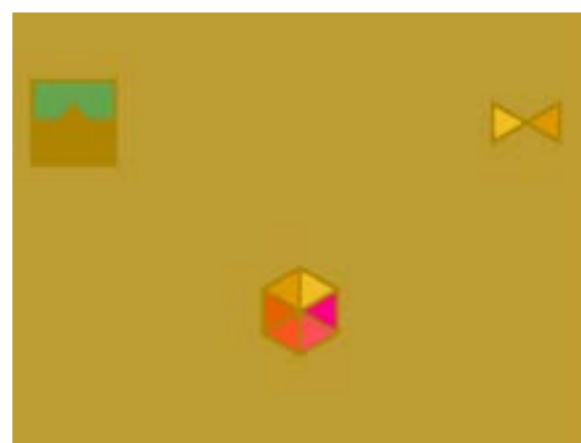
Trinket



A 9730 E



A 9730 O



A 9730 Y



A 9730 G



A 9730 T



A 9253 E1



A 9253 O



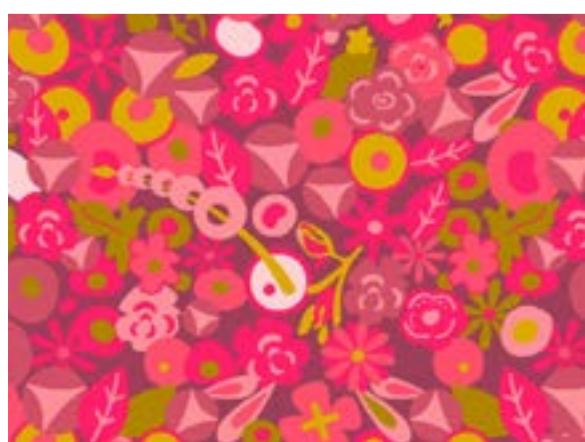
A 9253 Y



A 9253 G



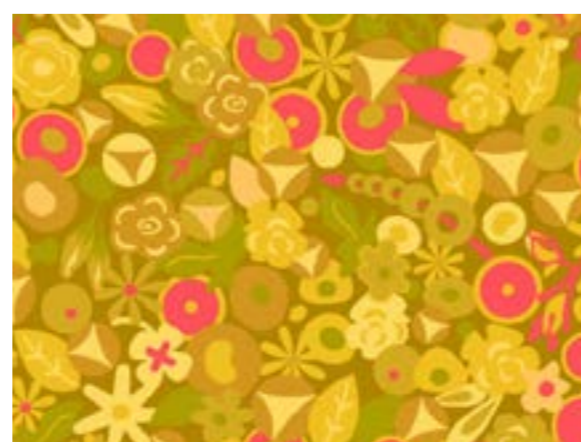
A 9253 T



A 8902 E1



A 8902 O



A 8902 Y



A 8902 G



A 8902 T1

February 2021  
27 SKUs

Coordinating  
Linen Textures



Crochet



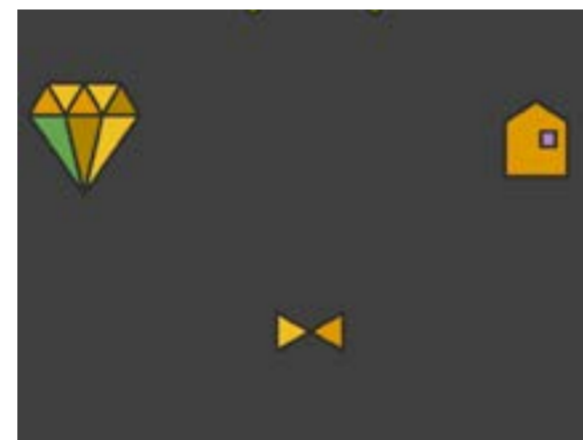
Tuesday



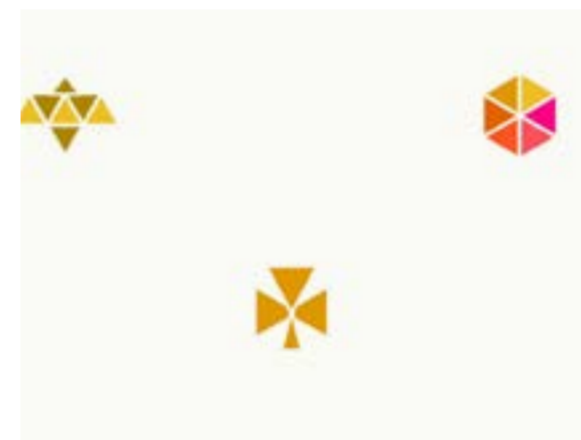
A 9730 B



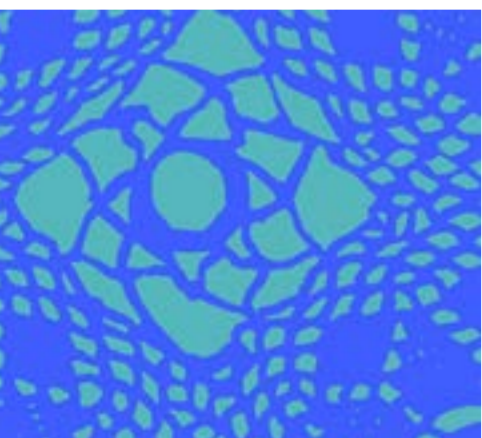
A 9730 P



A 9730 C



A 9730 L



A 9253 B



A 9253 P1



A 9253 C



A 9253 L1



A 8902 B1



A 8902 P



A 8902 C



A 8902 L



1473 R4 Old Rose Linen Texture



1473 N4 Orange Linen Texture



1473 Y5 Sunshine Linen Texture



1473 Y7 Gold Linen Texture



1473 G1 Lime Linen Texture



1473 G6 Moss Linen Texture



1473 T3 Aquamarine Linen Texture



1473 T5 Turquoise Linen Texture



1473 T4 Peacock Linen Texture



1473 B11 Ultramarine Linen Texture



1473 P5 Azalea Linen Texture



1473 L4 Hyacinth Linen Texture



1473 S8 Slate Linen Texture



1473 S9 Charcoal Linen Texture