

# Alice FOREVER

VIDEO ANIMATION



*Alice is the Stamperia flagship Collection since many years now, loved by all our customers and fans. In this catalogue you find the updated version with all our newest items: Ephemera, Rub on, Fabric and many more. Enter the world of Alice and discover the new items to play with!*





# RUB ON

TRANSFER FILM FOR DECORATION

CM 10.16x21.6

With Rub on you can transfer images on any kind of smooth surface, as if they were printed on it. Very suitable for Journaling and for decoration. Best on light colour surfaces.



DFLRB23



DFLRB24



# EPHEMERA

ADHESIVE PAPER CUT OUTS

CM 12x16.5

GR 300

Adhesive paper cut outs, suitable for Journaling, Card making and scrapbooking.



DFLCT15

56 pcs

300 grs

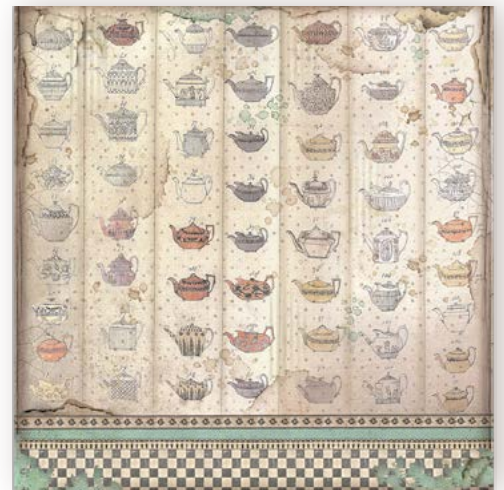
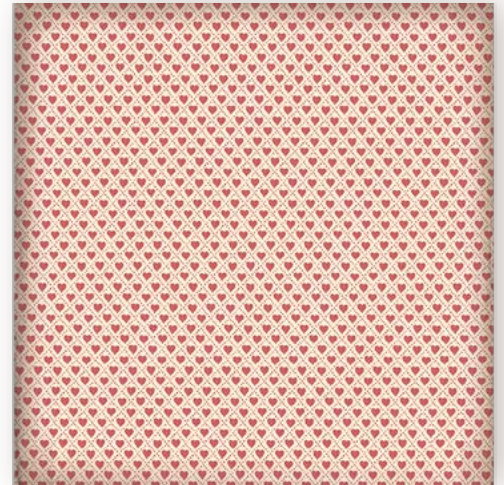




# FABRIC

CM 30x30  
4 POLYESTERFABRICS

The Fabric can be sewn by hand or by machine, can be glued with Craft Glue. and washed by hand in cold water.



DC31  
ML 80

SBPLT12





# Rice Paper SELECTION

6 PRINTED RICE PAPER A4  
CM 21x29.7 - GR 28

NEW



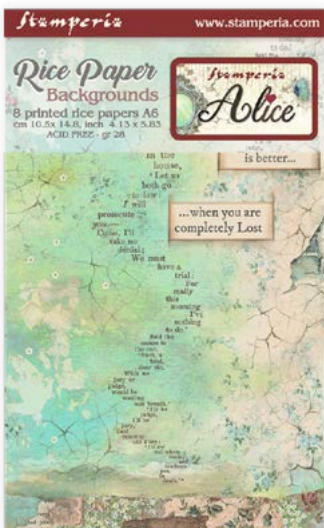
DFSA4XAL



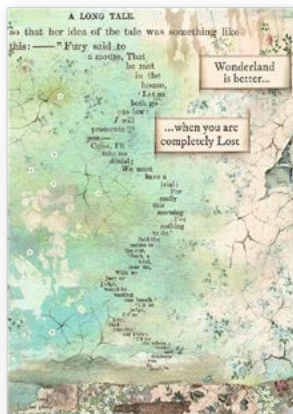
# Rice Paper Backgrounds

8 PRINTED RICE PAPER A6  
CM 10.5x14.8 - GR 28

NEW



DFSAK6003





# Rice Paper

A4 - CM 21x29.7  
GR 28



NEW

DFSA4765



NEW

DFSA4766



DFSA4605



DFSA4604



DFSA4603



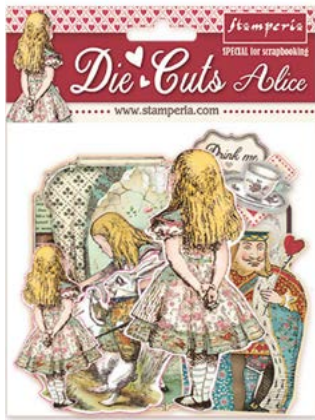
DFSA4382



DFSA4349

## Die Cuts

PRINTED ON CARDBOARD  
GR 800



DFLDC07 - 62 pcs



DFLDC76 - 67 pcs

NEW

## Clear Die Cuts

PRINTED ON ACETATE  
FULL COLOR GR 800



DFLDCP18 - 57 pcs



# Kit pop up

CM 30.5x30.5



SBPOP01



SBPOP04

# WOODEN SHAPE

A5 - CM 14.8x21



KLSP104



KLSP105

# Chipboard

CM 15x30



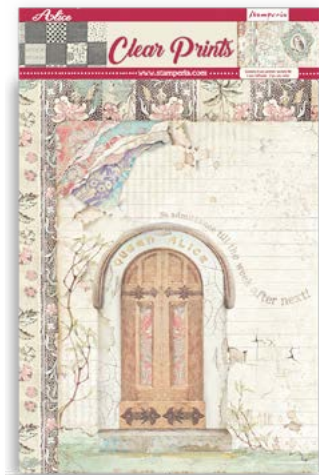
DFLCB38



DFLCB39

# Clear Prints

6 SHEETS  
A4 - CM 21x29.7



SBA412

# STAMPS

CM 14x18



WTKCC185



WTKCC203

# Cards collection

13 CARDS  
CM 15x22 - GR 200



SBCARD01



SBCARD02

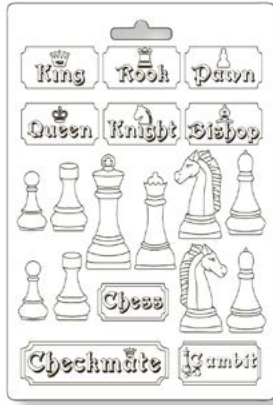


# MOULD A4

CM 21x29.7



K3PTA4506



K3PTA4507



K3PTA543



K3PTA588



K3PTA589



K3PTA590

# STENCILS

CM 20x25  
THICKNESS CM 0.5



KSTD088



KSTD089



KSTD090



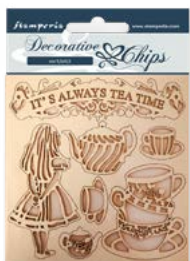
KSTD091



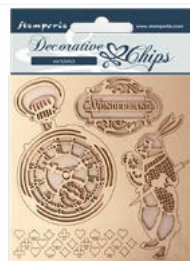
KSTD092

# Decorative Chips

CM 14x14



SCB49



SCB50



SCB74



SCB75



SCB76



SCB77



SCB78



# SCRAPBOOKING PADS

EXTRA LARGE

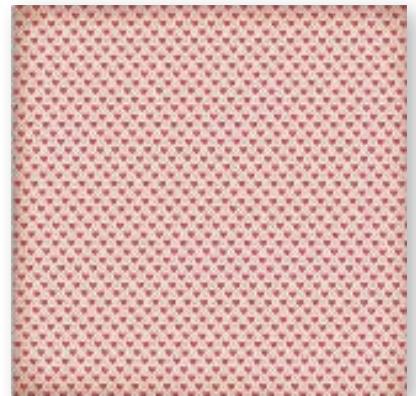
**SBBXLB08G**

Block 22 Sheets

Single Face

cm 30.5x30.5 (12"x12")

# GOLD PRINTED





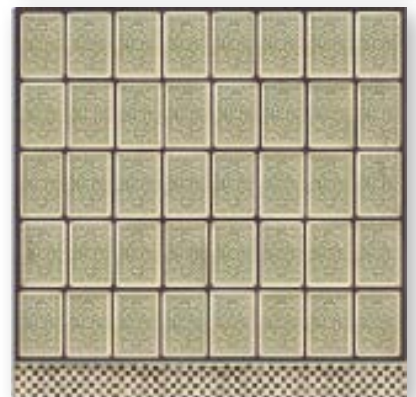
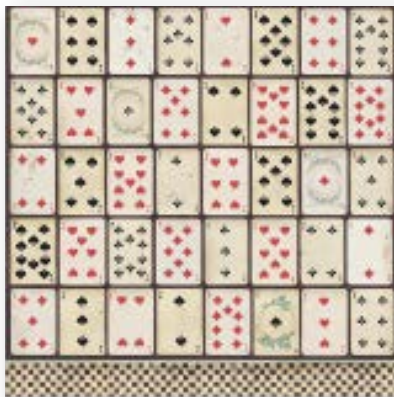
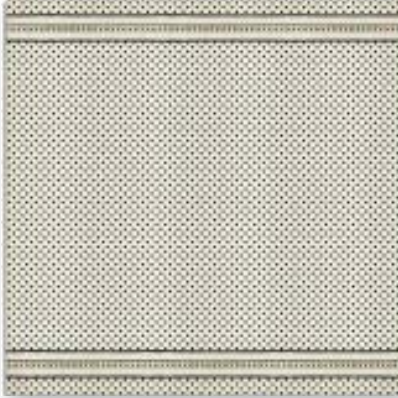
# SCRAPBOOKING PADS

EXTRA LARGE

**SBBXLB08G**

Block 22 Sheets  
Single Face  
cm 30.5x30.5 (12"x12")

# GOLD PRINTED





# SCRAPBOOKING PADS

LARGE

**SBBL52**

Block 10 Sheets  
Double face  
cm 30.5x30.5 (12"x12")

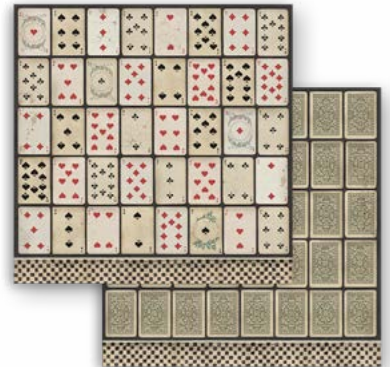
SMALL

**SBBS01**

Block 10 Sheets  
Double face  
cm 20.3x20.3 (8"x8")



BACK  
COVERS





# SCRAPBOOKING PADS

EXTRA LARGE

**SBBXL12**

Block 22 Sheets  
Double face  
cm 30.5x30.5 (12"x12")



LARGE

**SBBL93**

Block 10 Sheets  
Double face  
cm 30.5x30.5 (12"x12")



SMALL

**SBBS42**

Block 10 Sheets  
Double face  
cm 20.3x20.3 (8"x8")





# SCRAPBOOKING PADS

## BACKGROUNDS Selection

Stamperia backgrounds are known for their unique style. Here is a pad of backgrounds that can be combined with the Collectables subjects to create original compositions.

SMALL

**SBBS46**

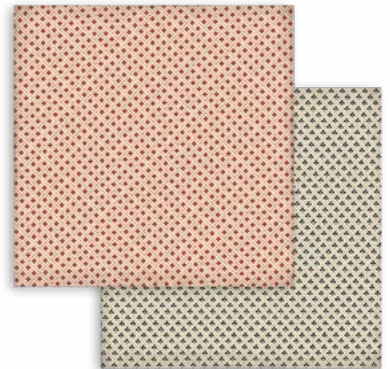
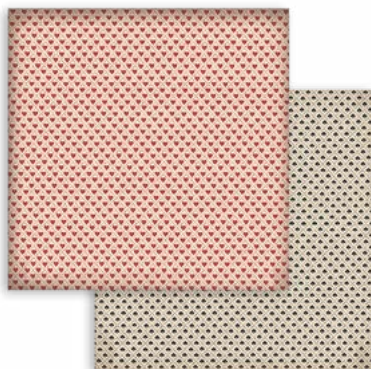
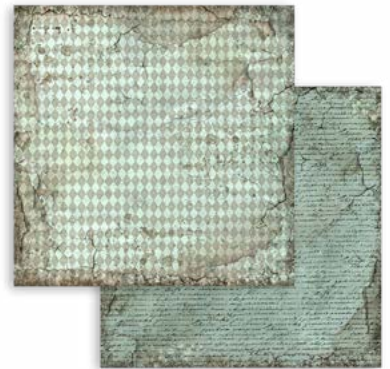
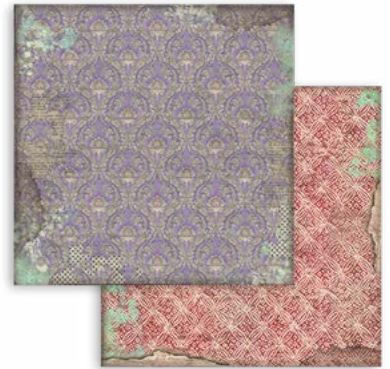
Block 10 Sheets

Double face

cm 20.3x20.3 (8"x8")



BACK  
COVERS





LOOSE

**SBB**

8 Sheets

Double face

cm 30.5x31.5 (12"x12")



**SBB582**



**SBB583**



**SBB815**



**SBB816**



**SBB817**



**SBB818**



**SBB819**



**SBB820**



# QUEEN ALICE ALBUM



- |                          |          |
|--------------------------|----------|
| CLASSIC SCRAPBOOKING PAD | SBBL93   |
| EPHEMERA                 | DFLCT15  |
| CLEAR DIE CUTS           | DFLDCP18 |
| DIE CUTS                 | DFLDC07  |
| CHIPBOARD                | DFLCB38  |
| CLEAR PRINTS             | SBA412   |
| DECORATIVE CHIPS         | SCB50    |
| DECORATIVE CHIPS         | SCB74    |
| DECORATIVE CHIPS         | SCB76    |
| DECORATIVE CHIPS         | SCB77    |
| DECORATIVE CHIPS         | SCB78    |
| DYE INK PAD TURQUOISE    | WKPR12   |





## ALTERED ALICE TAG



SCRAPBOOKING LOOSE  
MOULD A5  
STAMP  
DIE CUT  
WOODEN SHAPE  
WOODEN SHAPE  
MIXED MEDIA GLUE  
CRACKLE PASTE WHITE  
VINTAGE ANTIQUING PASTE  
ALLEGRO POWDER BLUSH  
SOFT CLAY

SBB582  
K3PTA589  
WTKCC185  
DFLDC07  
KLSP104  
KLSP105  
DC28M  
K3P37  
KAOLBR  
KAL44  
K3P58





TEA TIME JOURNAL



SCRAPBOOKING PAD  
SCRAPBOOKING PAD  
EPHEMERA  
RUB ON  
STAMP

SBBL93  
SBBS42  
DFLCT15  
DFLRB23  
WTKCC185





# ALICE FOREVER TAG



- |                          |          |
|--------------------------|----------|
| EPHEMERA                 | DFLCT15  |
| RUB ON                   | DFLRB23  |
| MOULD A4                 | K3PTA496 |
| CERAMIC POWDER           | FC04     |
| RICE PAPER A4            | DFSA4349 |
| STAMP                    | WTKCC185 |
| DYE INK PAD BLACK SHADOW | WKPR01   |
| PATINA SHADOW            | K3P16M   |
| ALLEGRO PETROLEUM GREEN  | KAL87    |
| ALLEGRO ORANGE           | KAL08    |
| ALLEGRO CORN             | KAL36    |
| ALLEGRO IVORY            | KAL12    |





# Selection

## MixMediAart SELECTION

A selection of 3 small jars - 50ml. Containing the most popular Stamperia products : Craklé Paste, Volume Paste and Glossy Gel. All you need for your Mixed Media projects.

K3PXMM  
ML 50



CRACKLÉ  
PASTE

VOLUME  
PASTE

GLOSSY  
GEL

## Mix media Journal

Journals made out of special paper suitable for mixed media techniques. The pages are thick and you can work on both sides.



JCH01A5  
A5 - CM 21X15

## Stone paper

Special paper made of natural fibers, extra strong. Versatile for all decorations! You can pierce, cut, sew, die-cut it and even decorate it with rice paper, stencil, acrylic colours.



DFPCA4  
WHITE - A4

## Velo glue

Glue for Napkins and rice paper. Delicate and transparent, it is ideal for all surfaces.



DC29M  
ML 80

## Mix media glue

Universal glue - water based. Suitable for all materials and surfaces.



DC28M  
ML 150

## Craklé Paste

Cracklé Paste water-based, is suitable for every porous surface. Required Primer on smooth surfaces. Once it is dried it becomes transparent. You can color it with acrylic colors, Acquacolor and Mystik ink. Can be dried with the hair dryer.



K3P50  
TRANSPARENT - ML 150

