

2024



The Home of Happy Stitching!

2024 Seasonal Collections

Enjoy brand new kits, designed and released in 2024, all fabulous additions to our current brochure!

Spring Collection 2024



Brand new designs from the ever popular artist Lucy Pittaway!



Butterflies And Babies
ref XLP10
26 x 26cm

All stitched on
14hpi white Aida.



Ladybird In The Meadow
ref XLP11
26 x 26cm



Life's Simple Pleasures
ref XLP12
18 x 12cm

UK's most
popular
published artist
2022!



Counted Cross Stitch

We step into 2024 with two more
Shoe Art designs by Sally King...



Posy

ref XSK18

22 x 26cm

16hpi white Aida

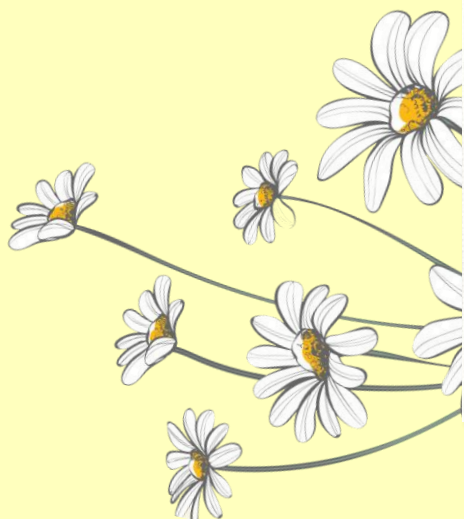


Strawberries And Cream

ref XSK19

29 x 21cm

14hpi white Aida



Counted Cross Stitch

We're looking forward to seeing lambs in the fields again with artwork from Hannah Dale of Wrendale Designs...



Green Pastures

ref XHD132

28 x 31cm

With exclusive 16hpi printed
'Pastures' Aida



Feathers And Thistles

ref XHD133

26 x 26cm

With exclusive 16hpi
speckle printed Aida



Sleeping On The Job

ref XHD134

34 x 28cm

With exclusive 16hpi
speckle printed Aida.

Counted Cross Stitch

Send your loved ones a heartfelt greetings card, with designs from Hannah Dale...

Worked on our exclusive 16hpi speckle printed Aida, finished size 10 x 16cm.



The Birds And The Bees
ref XGC43



Hammy Anniversary
ref XGC44



Hammy Anniversary
Needle Minder
ref XA28 3.5 x 4cm

Check out
the matching
needle
minder...

...and a furry friend from The Margaret Sherry Collection...

finished size 10 x 10cm.



Thank you!
ref XGC45
16hpi ice blue Aida



Seeds Of Love
ref XGC46
16hpi white Aida

All our greetings cards include an aperture card & envelope

Counted Cross Stitch

Introducing the Full Moons collection by brand new Bothy artist Lizzie Spikes of Driftwood Designs.

On 14hpi white Aida, finished size 18 x 27cm.

Budding Moon ref XDD1



Flower Moon ref XDD2



Hunter's Moon ref XDD3



Snow Moon ref XDD4



Felt Embroidery

Following on from the successful launch of our felt embroidery kits in 2023...



These Bothy original designs are worked on full colour printed calico and include a 6 inch hoop for working and framing.



Morning Chorus

ref EFE4

Finished size 15cm diam

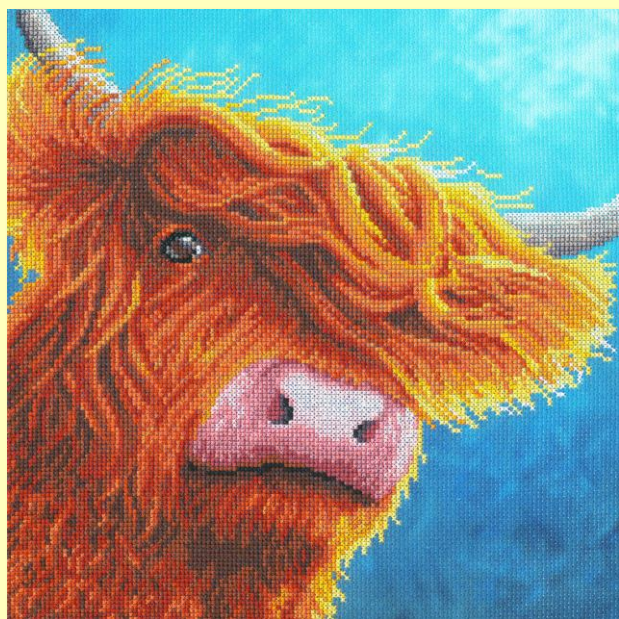


Host Of Golden Daffodils

ref EFE5

Finished size 15cm diam

Another stunning addition to The Menagerie collection by Rachel Froud!



Highlander

ref XRF8 26 x 26cm

Full colour printed 14hpi Aida

Keep your needle safe...



Imagine Needle Minder

ref XA27 4cm diam

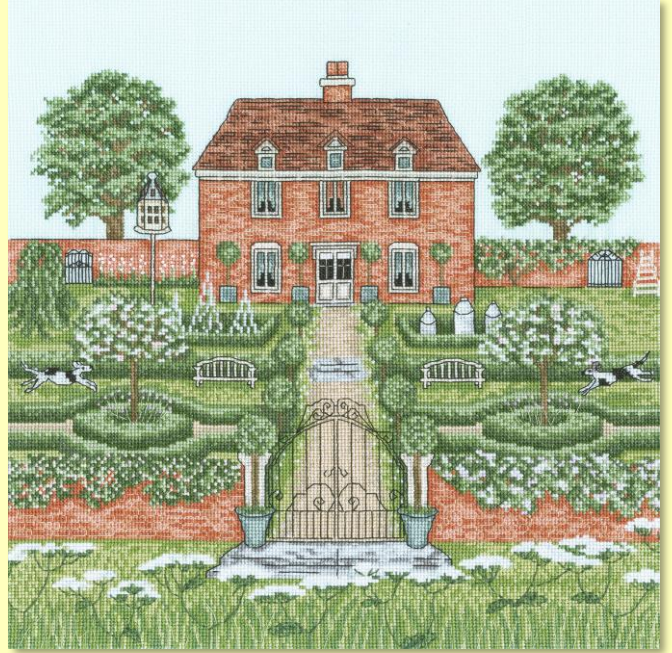
Counted Cross Stitch

We have two additions to Sally Swannell's Country Estate collection.

Both designs are worked on 16hpi ice blue Aida.



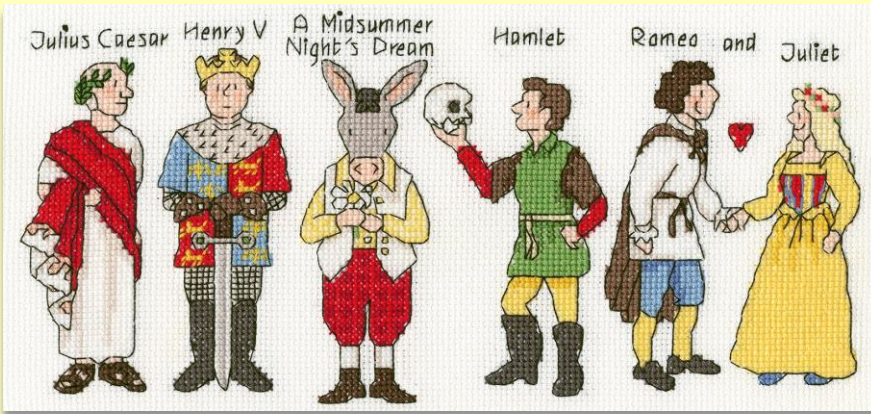
Dovecote
 ref XSS22 26 x 26cm



Manor House
 ref XSS23 30 x 30cm

We celebrate some of our literary greats with artist Alison Gardiner.

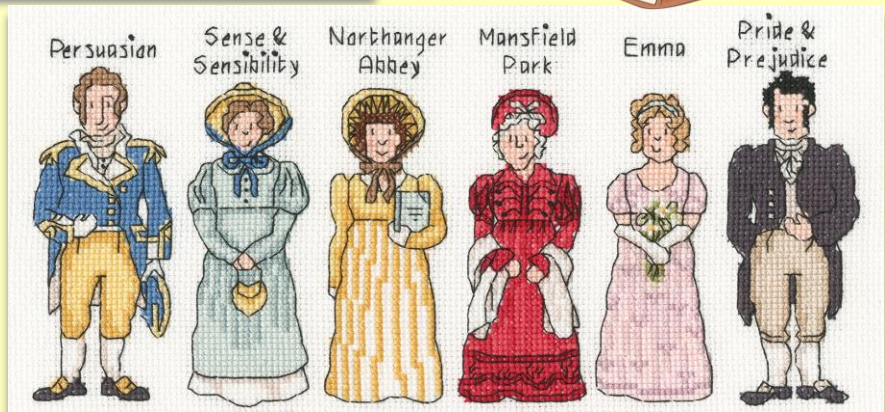
Both designs are worked on 14hpi white Aida, finished design size 28 x 13cm.



All The World's A Stage
 ref XAG3



No Enjoyment Like Reading
 ref XAG4



Counted Cross Stitch

Anita Jeram's new designs are as cute as ever!

Worked on 14hpi cream Aida, with 27hpi Linda available on request.



From the
illustrator of
*Guess How Much
I Love You*

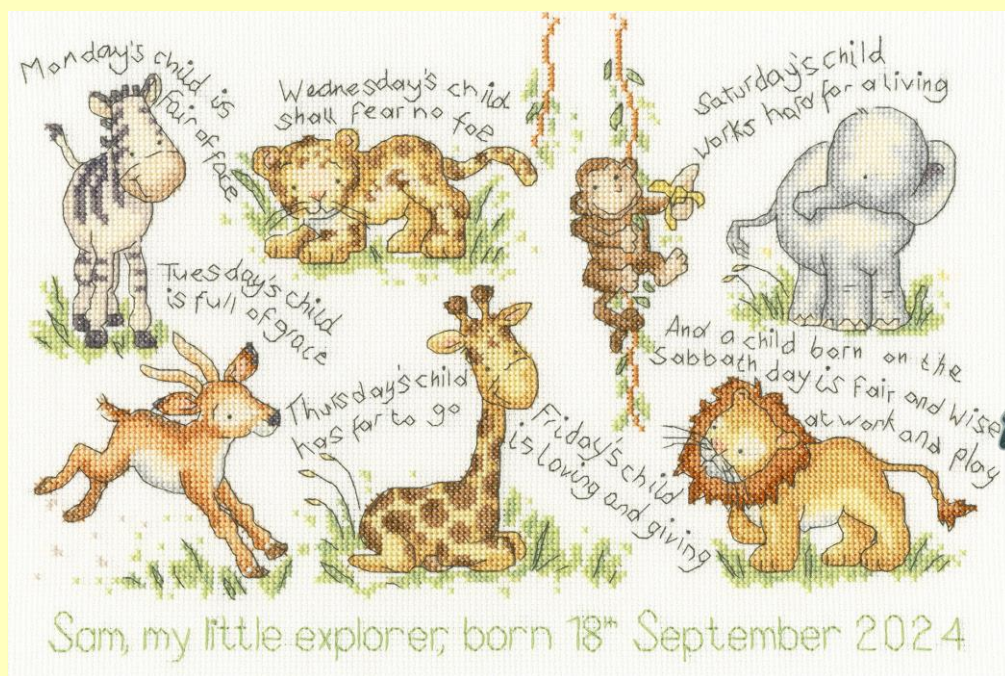


Love is forever
ref XAJ27 14 x 17cm



Storytime
ref XAJ28 19 x 18cm

We have another wonderfully wild birth sampler from Kate Garrett,
with a matching Leo the Lion needle minder...



Monday's Child
ref XKG13 33 x 22cm
14hpi white Aida



**Leo The Lion
Needle Minder**
ref XA26 4 x 3cm

Counted Cross Stitch

And don't forget these fabulous new designs from popular returning Bothy artists...



A Baby Brings by Amanda Loveseed

ref XAL12 33 x 34cm

16hpi white Aida

Och Aye by Beryl Cook

ref XBC12 20 x 24cm

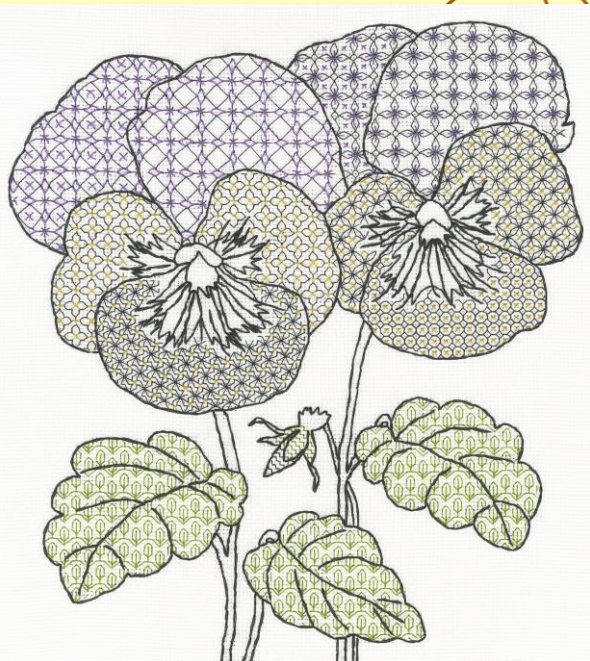
14hpi white Aida



Blackwork Pansies by Eleanor Friston

ref XBW9 28 x 31cm

14hpi white Aida



The Demise Of King Harold

ref XBT5 30 x 26cm

14hpi cream Aida



Tapestry

We finish our Spring 2024 collection with three seaside inspired tapestry designs by new Bothy artist Victoria Whitlam.

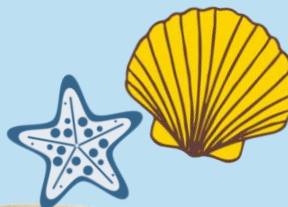


All worked on 10hpi twist interlock canvas, finished size 14 x 14 inches square.



Plain Sailing
ref TVW1

Velvet backing kits available



Land Ho
ref TVW2



Guiding Light
ref TVW3





The Home of Happy Stitching!

Use your smart phone to scan these QR codes and find out more about Bothy Threads!

Visit our website to view all of our designs...

We're here to help...



Check out our top tips!



www.bothythreads.com

Join our community...



Check out our socials!

Order online at
www.bothythreads.com
Or call us in the office on
+44 (0)1900 828844

