

Six new designs by Hannah Dale on 14hpi Aida  
 custom printed with brown speckles!

Chitter Chatter

ref XHD77 26x26cm



Mother Duck

ref XHD81 38x18cm



Hand-Picked For You  
 ref XHD79 26x26cm



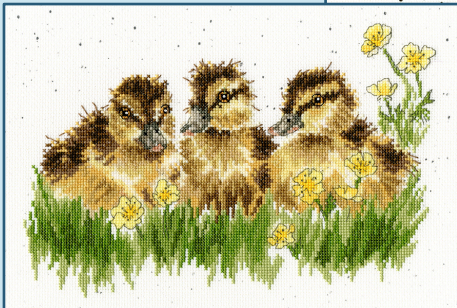
Daisy Mouse

ref XHD80 26x26cm



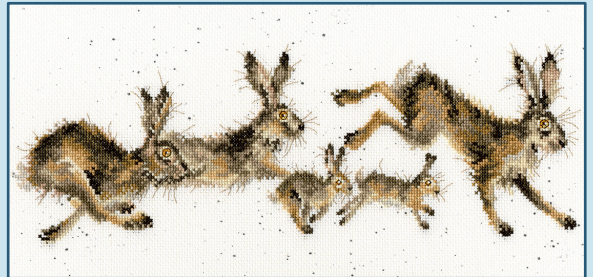
Buttercup

ref XHD78 30x20cm



Spring In Your Step

ref XHD82 38x18cm



////// Tapestry ////

Two new tapestry kits on 10hpi full colour printed canvas.

Daisy Coo  
 ref THD42  
 36x36cm  
 (14x14 inches)



Mother Hen  
 ref THD50  
 36x36cm  
 (14x14 inches)



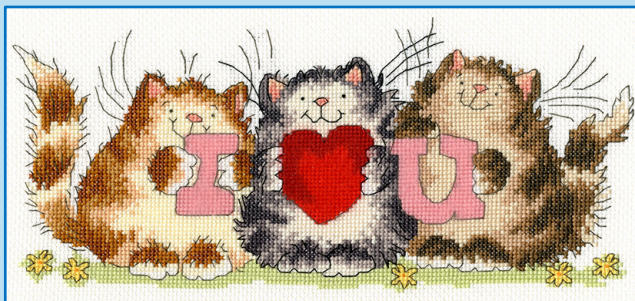


XXXXX Counted Cross Stitch XXXXX

# Spring Collection 2021



More of Margaret Sherry's cute creatures!  
The larger pictures are on 14hpi and the cards on 16hpi Aida.



I ♥ U

ref XMS25 28x13cm



The Cat That Got The Cream

ref XMS26 36x25cm



Threads included  
for Boy or Girl!

Hello Baby!

ref XGC21 10x10cm



Sprinkles On Top

ref XGC22 10x10cm



Birthday Balloons

ref XGC23 10x10cm



Number One Dad

ref XGC24 10x10cm





XXXXX Counted Cross Stitch XXXXX

# Spring Collection 2021

New seasons designs by Amanda Loveseed.

Stitched on 14hpi Aida with Organza overlay. Autumn and Winter to follow!

Spring Time  
ref XAL3 24x24cm

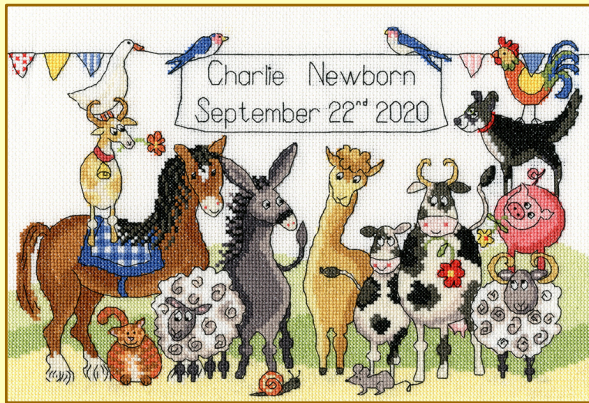


Summer Time  
ref XAL4 24x24cm



## New Baby Samplers

Stitched on 14hpi Aida



Something To Crow About

ref XNB6 31x21cm

by Julia Rigby



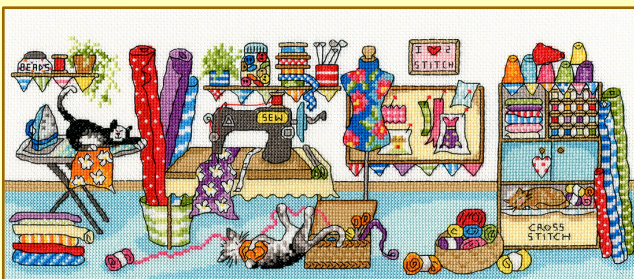
Rainbow Baby

ref XNB7 33x23cm

by June Armstrong

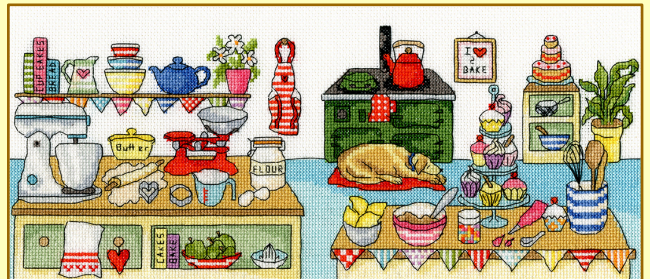
## New Fun designs by Julia Rigby

Stitched on 14hpi Aida



Sewing Fun

ref XJR38 37x16cm



Baking Fun

ref XJR39 37x16cm



XXXXX Counted Cross Stitch XXXXX

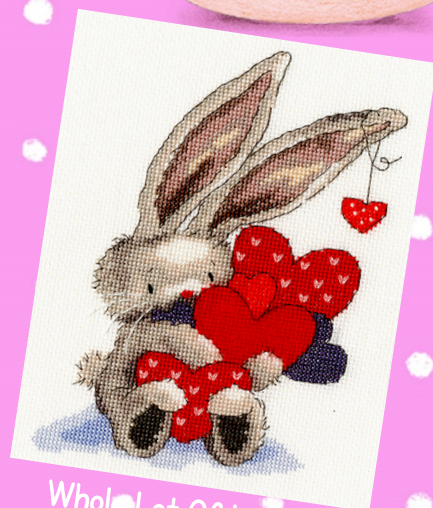
# Spring Collection 2021



New Bebunni designs  
on 14hpi Aida.



**BABY**  
ref XBB20 15x19cm



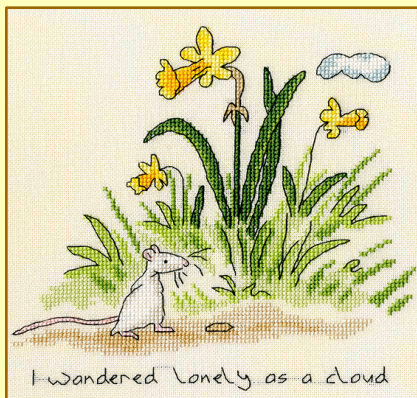
**Whole Lot Of Love**  
ref XBB21 16x20cm

## Three more adorable animals by Anita Jeram.

Supplied with 14hpi Aida, available on request with 27hpi evenweave.



**Collecting Kisses**  
ref XAJ9 15x19cm



**Lonely as a Cloud**  
ref XAJ10 19x18cm



**Blossom**  
ref XAJ11 15x19cm

## ////// Tapestry ////

## Two new kits based on William Morris' Forest Tapestry, 1887.

12hpi full colour printed canvas.

**Dove And Rose**  
ref TAC12  
36x36cm  
(14x14 inches)



**Bren Rabbit**  
ref TAC13  
36x36cm  
(14x14 inches)

