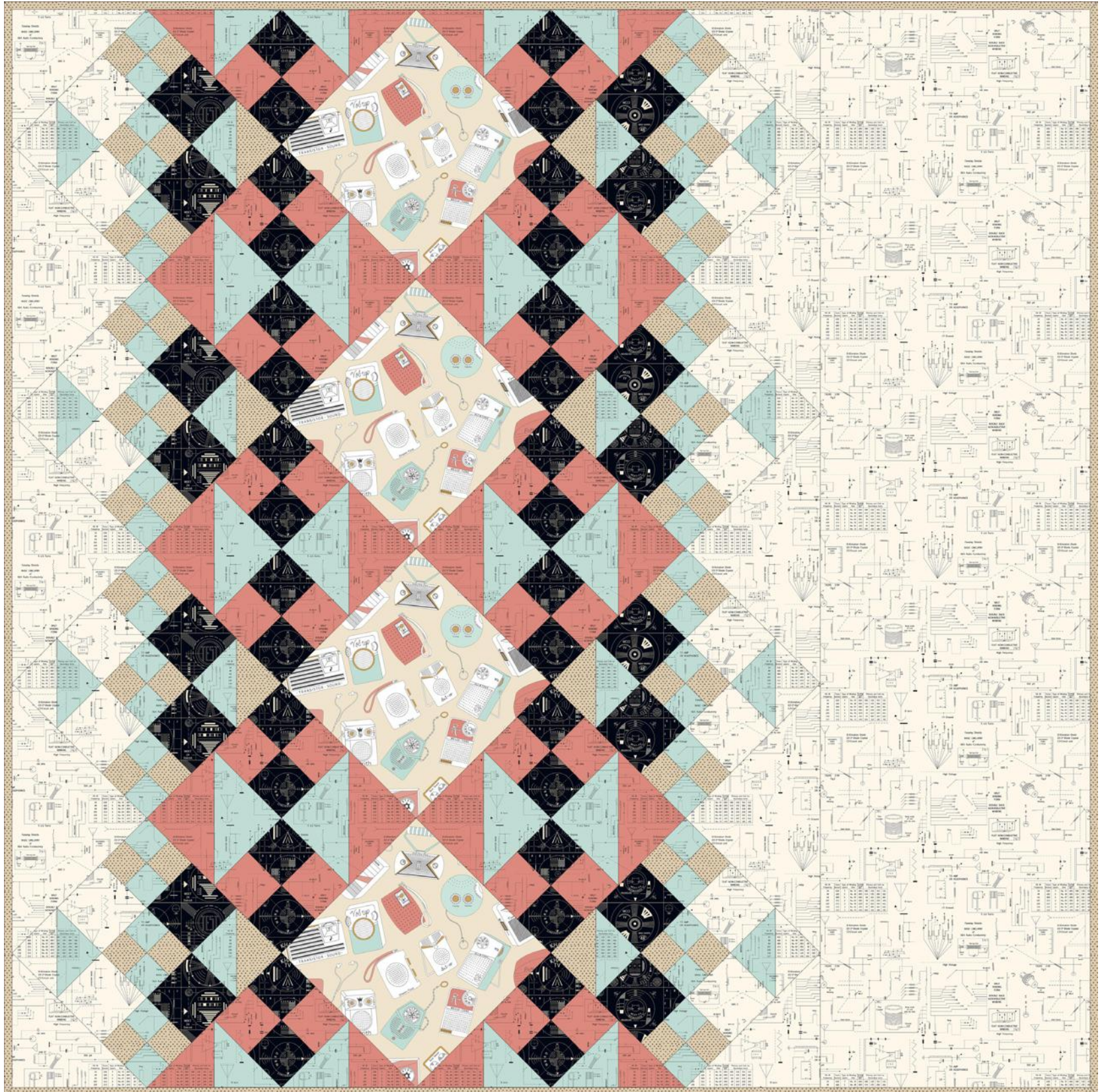




emilio



Designed by: The Stitch TV Show
Quilt Size: 69" x 69"

Wholesale and retail patterns available at:
Quilt Exchange
info@quiltexchange.com · 270.534.5475

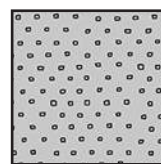
Pattern Name: Emilio
Pattern # 978-1-68419-947-1
Wholesale Price: \$5.00

FOR SALE PATTRN 3659A



KIT CALCULATIONS			
EMILIO		12 KITS	
Size: 69" x 69" SKU: P3659A ALL	YARDS	BOLTS	
24299 AE *Pixie Dots (inc. binding)	1	1	
26508 J	1	1	
26509 Q	1	1	
26509 E	2	2	
26507 E	7/8	1	
26509 C	7/8	1	
26507 E (Backing only)	4 1/4	4	
Approx. TOTAL YARDS IN QUILT: 7 (Total yardage does not include suggested backing)			

Custom pattern covers are not available
No minimum for wholesale orders.



24299 AE
Pixie Dots
also binding



26508 J



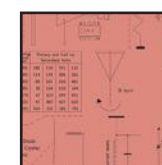
26509 Q



26509 E



26507 E
also backing

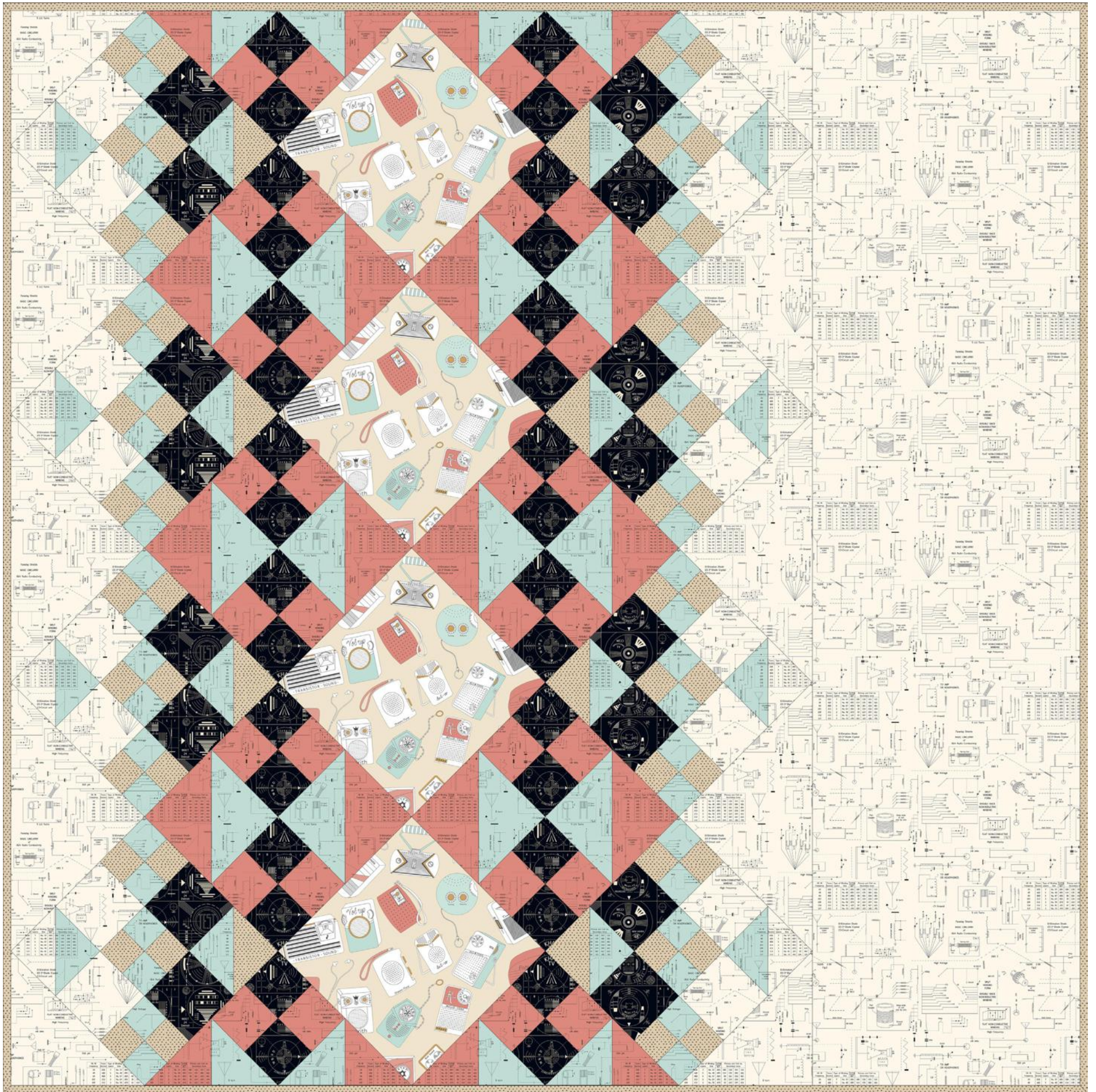


26509 C

Frequency complete Collection includes 6 Prints / 7 Bolts



critic



Designed by: The Stitch TV Show
Quilt Size: 69" x 69"



Designed by: Sassafras Lane Designs
Quilt Size: 56" x 72"

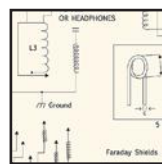
Wholesale and retail patterns available at:
Sassafras Lane
303.549.9021 • contact@sassafras-lane.com
Also available at: Checker Distributors

Pattern Name: SASSLN0014
Wholesale Price: \$4.75
FOR SALE PATTRN 3659B



Custom Pattern Covers are not available.
12 minimum for wholesale orders.

KIT CALCULATIONS		
EUCLID AVENUE		12 KITS
Size: 56" x 72"	YARDS	BOLTS
SKU: P3659B ALL 		
26509 E	1	1
26508 X	1	1
26508 J	1 1/3	2
26507 J	1 1/3	2
24299 P *Pixie Dots	3/4	1
26509 C	3/4	1
24299 QH *Pixie Dots	1/2	1
26509 Q	1/2	1
24299 J *Pixie Dots (Binding Only)	1/2	1
26507 J (Backing only)	3 1/2	3
Approx. TOTAL YARDS IN QUILT: 8 (Total yardage does not include suggested backing)		



26509 E



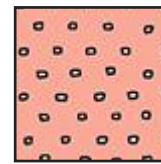
26508 X



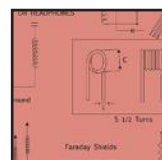
26508 J



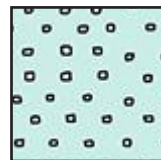
26507 J
also backing



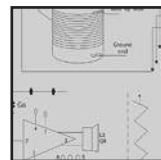
24299 P
Pixie Dots



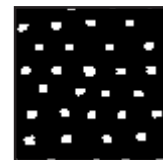
26509 C



24299 QH
Pixie Dots



26509 Q



24299 J
Pixie Dots
binding only



Frequency complete Collection includes 9 Prints / 11 Bolts

Judy Gauthier

musical overture



Designed by: Sassafras Lane Designs
Quilt Size: 56" x 72"

Jacqueline

Miranda day bag/bendy bag



Inner Pocket

Designed by: Lazy Girl Designs


Miranda Bag
Finished Size: 12" x 10" x 6"



Bendy Bag
Finished Size: 3" x 6" x 6"

Wholesale and retail patterns available at: Lazy Girl Designs
patterns@lazygirldesigns.com

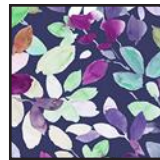
Also available at: Brewer & Checker Distributors

KIT CALCULATIONS		
MIRANDA BAG		
Size: 12" x 10" x 6" SKU: P3649A ALL 	YARDS	BOLTS
26558 PV Cover main part of bag	1/3	1
26559 V Cover bottom of bag, Handles, Flap	2/3	1
26560 W Lining	1/2	1
26561 W Pockets	2/3	1
Approx. TOTAL YARDS: 2.5		

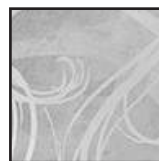
Jacqueline complete Collection
includes 4 Prints / 4 Bolts



26558 PV




26559 V



26560 W



26561 W

KIT CALCULATIONS	
BENDY BAG	
Size: 3" x 6" x 6" SKU: P3649B ALL 	YARDS
26559 V Cover	1/4
26561 W Lining	1/4
Approx. TOTAL YARDS: 1/2	

Bendy Bag:

- 1 pkg Dreamy Fusible Fleece SLG1061 (or 1/4 yd from bolt) by Lazy Girl.
- Zipper 14" or longer, polyester all-purpose only.

Miranda Day Bag:

- 3/4 yd Dreamy Fusible Fleece SLG106 by Lazy Girl.
- 1 1/2 yds Face-It Firm med/heavy fusible interfacing SLG104 by Lazy Girl.
- 2" Velcro sew-in or 'Fusion'.
- Bag-E-Bottom bag support Size D LGD503 by Lazy Girl.

Special Instructions:

- Rotary cut projects, no pattern pieces provided.

Pattern Name: Miranda Bag / Bendy Bag

Pattern Number: LGD123 / LGD134

Wholesale Price: \$5.00 / \$5.00

FOR SALE PATTRN 3649A FOR SALE PATTRN 3649B



**Custom Pattern Covers are not available.
12 patterns minimum for wholesale orders.**

Jacqueline

Miranda day bag/bendy bag



Inner Pocket

Miranda Bag
Finished Size:
Approximately 12" x 10" x 6"



Bendy Bag
Finished Size:
Approximately 3" x 6" x 6"

Designed by: Lazy Girl Designs

Jacqueline

Bargello Star Quilt



Quilt Size: 95" x 107"

Designed by: Sue Harvey & Sandy Boobar of Pine Tree Country Quilts

Wholesale and retail patterns available at: **Pine Tree Country Quilts**

207.827.3876 • susanharvey135@gmail.com

Also available at: Checker Distributors

Pattern Name: Jacqueline Bargello Star


Pattern Number: PT1648

Wholesale Price: \$4.75

FOR SALE PATTRN 3649C

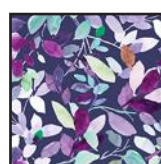


Pattern Covers will feature these fabrics.
3 patterns minimum for wholesale orders.
above sku orders 12 patterns

KIT CALCULATIONS		
Jacqueline Bargello Star QUILT	12 KITS	
Size: 95" x 107" SKU: P3649C ALL 	YARDS	BOLTS
26557 W	1½	2
26558 V	1⅛	1
26558 W	1⅓	2
26559 V	1⅞	2
26559 W	½	1
26560 W	¾	1
26560 VP (includes binding)	2¼	2
26561 P	¾	1
26561 W	4	4
26312 W * Avalon 108" (backing)	3⅓	2
*based on 18 yard bolts Approx. TOTAL YARDS IN QUILT: 13.3 (Total yardage does not include suggested backing)		



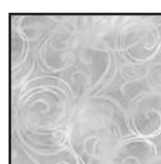
26557 W



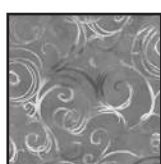
26559 V



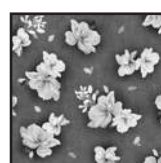
26559 W



26560 W



26560 VP
inc. binding



26558 V



26558 W



26561 P



26561 W



26312 W
Avalon 108"
backing

Project
includes 9 Prints / 15 Bolts



See reverse side

Jacqueline

Bargello Star

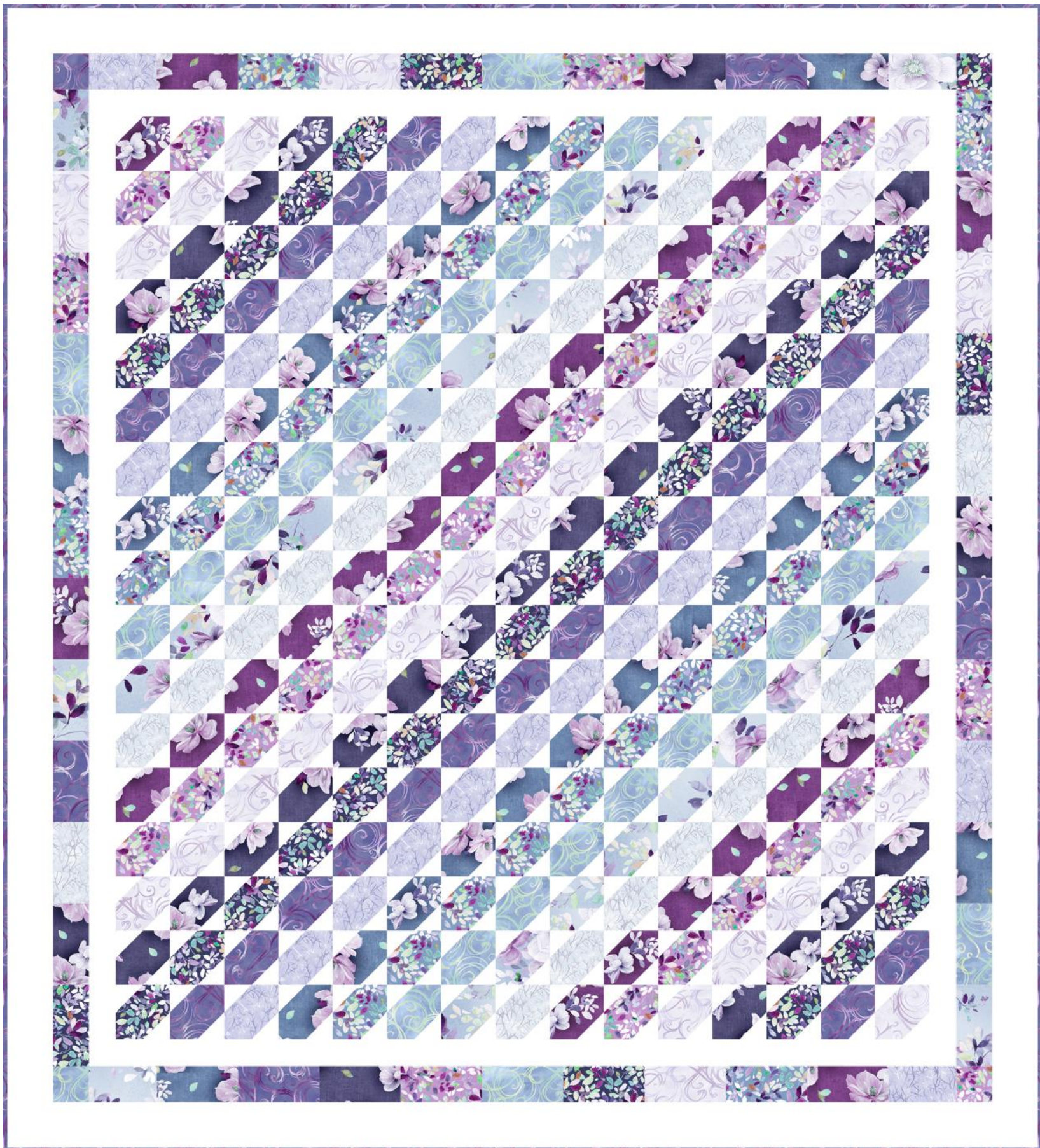


Quilt Size: 95" x107"
Designed by: Sue Harvey & Sandy Boobar of Pine Tree Country Quilts

See reverse side

Jacqueline

Fat Quarter Flow



Quilt Size: 57" x 63"

Designed by: Sue Harvey & Sandy Boobar of Pine Tree Country Quilts

Wholesale and retail patterns available at: **Pine Tree Country Quilts**

207.827.3876 • susanharvey135@gmail.com

Also available at: Checker Distributors

Pattern Name: Fat Quarter Flow

Pattern Number: PT1650

Wholesale Price: \$4.75

FOR SALE PATTRN 3649D

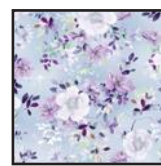


Pattern Covers will feature these fabrics.
3 patterns minimum for wholesale orders.
above sku orders 12 patterns

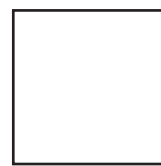
KIT CALCULATIONS		
Fat Quarter Flow QUILT		12 KITS
Size: 57" x 63" SKU: P3649D ALL 	YARDS	BOLTS
FATQUAR JACQLN 3PACK	1 bundle	4 units
26560 VP (binding only)	5/8	1
21520 Z *Illusions	2 1/2	3
26557 W (backing only)	3 3/4	3
*based on 12 yard bolts Approx. TOTAL YARDS IN QUILT: 13.3 (Total yardage does not include suggested backing)		



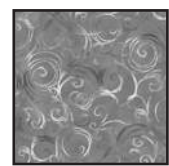
FATQUAR JACQLN 3PACK



26557 W
backing



21520 Z
Illusions



26560 VP
binding

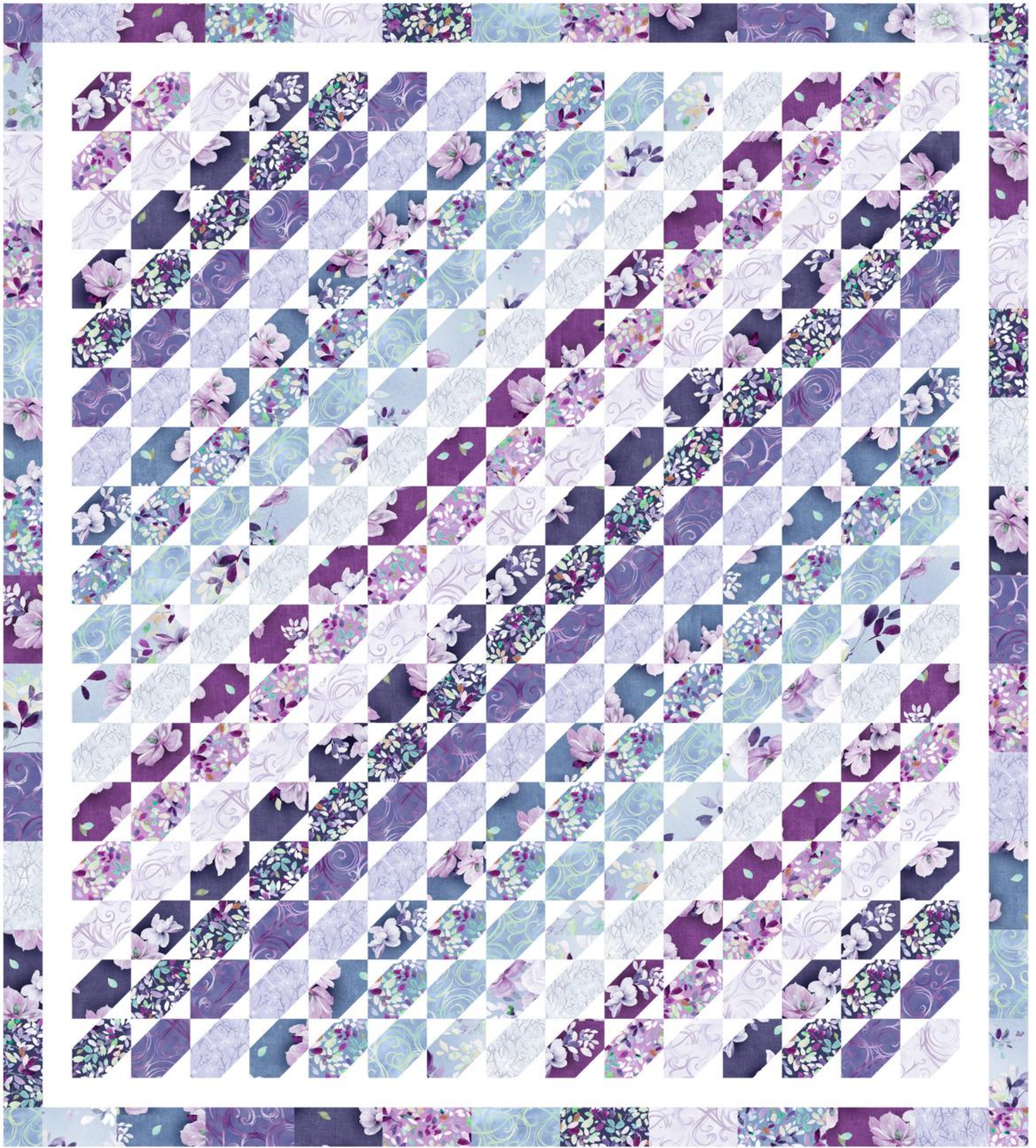


See reverse side

FOR SALE PATTERN
Ships April - Winter 2018

Jacqueline

Fat Quarter Flow



Quilt Size: 57" x 63"


Designed by: Sue Harvey & Sandy Boobar of Pine Tree Country Quilts

ROUND 'EM UP

Quilt



Quilt Size: 61" x 78"

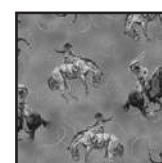
KIT CALCULATIONS		
ROUND 'EM UP Quilt		12 KITS
Size: 61" x 78" SKU: P3651A ALL 	YARDS	BOLTS
26603 E	7/8	1
26604 B	7/8	1
26605 B	1	1
23528 AT *Color Blends II	3/8	1
23528 TC *Color Blends II	3/8	1
23528 AC *Color Blends II	3/8	1
26606 S	3/8	1
26606 E	3/8	1
23528 ES *Color Blends II	1	1
23528 S *Color Blends II (Includes Binding)	1	1
26606 B	3/8	1
26603 E (Backing)	5	4
*Based on 12 yd bolts		
Approx. TOTAL YARDS IN QUILT: 7 (Total yardage does not include suggested backing)		
Number of bolts is based on continuous cuts		



26603 E
also backing



26604 B



26605 B



23528 AT
Color Blends II



23528 TC
Color Blends II



23528 AC
Color Blends II



26606 S



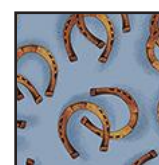
26606 E



23528 ES
Color Blends II



23528 S
Color Blends II
also binding



26606 B

Round 'Em Up complete project includes 11 Prints / 11 Bolts

Note: Yardage amounts shown are calculated based on standard editorial guidelines and feature commonly used cuts. Please refer to the cutting information for the exact size of each piece. You will want to base your kit fee on the piece cuts rather than the full yardage amount. As always, we recommend that you make a shop sample prior to creating any kit.

Please note that these yardage amounts are the designer's estimates only. Some changes may occur when the project instructions are written.

ROUND 'EM UP

Quilt



Quilt Size: 61" x 78"



Designed by: Joanne Hillestad, The Fat Quarter Gypsy
Quilt Size: 62" x 84"

Wholesale and retail patterns available at:
The Fat Quarter Gypsy
612.965.4396 • Info@thefatquartergypsy.com


Also available at: Checker Distributors

Pattern Name: FQG113
Wholesale Price: \$5.00

FOR SALE PATTRN 3656A



Pattern cover will reflect the image of this quilt.
12 patterns minimum for wholesale orders.

KIT CALCULATIONS		
CHOPPED		12 KITS
Size: 62" x 84" SKU: P3656A ALL 	YARDS	BOLTS
26583 Q	1 FQ	1
26582 S	1 FQ	1
26581 J	1 FQ	1
26585 Q	1 FQ	1
26585 E	1 FQ	1
26586 O	1 FQ	1
26583 J	1 FQ	1
26584 E	1 FQ	1
26580 E	1 5/8	2
26586 Q (Includes binding)	2 3/4	3
26580 S (Backing only)	5 1/4	6
Approx. TOTAL YARDS IN QUILT: (Total yardage does not include suggested backing)		



26583 Q



26582 S



26581 J



26585 Q



26585 E



26586 O



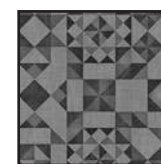
26583 J



26584 E



26580 E



26586 Q
includes binding

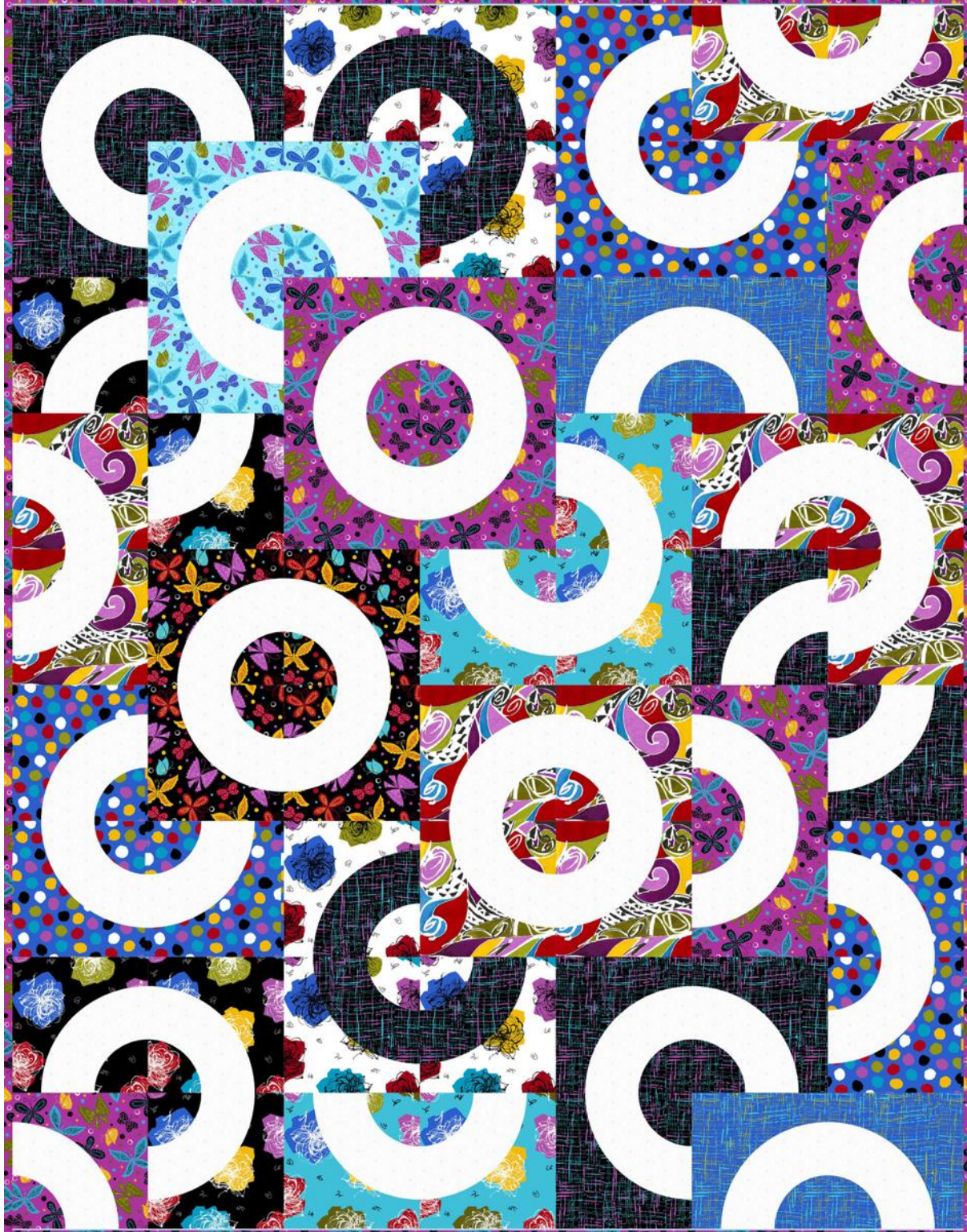


26580 S
backing only

Seamless complete Collection includes 10 Prints / 13 Bolts



Designed by: Joanne Hillestad, The Fat Quarter Gypsy
Quilt Size: 62" x 84"



Designed by: Jessica VanDenburgh of Sew Many Creations
Quilt Size: 49" x 63"

Wholesale and retail patterns available at:
Sew Many Creations
518.366.1299 • jessica@sewmanycreationsny.com

Pattern Name: SMC922

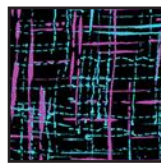
Wholesale Price: \$5.00

FOR SALE PATTRN 3665A



**Custom Pattern Covers are not available.
No minimum for wholesale orders.**

KIT CALCULATIONS		
ORBIT QUILT		12 KITS
Size: 49" x 63" SKU: P3665A ALL 	YARDS	BOLTS
26577 J	1	1
26574 Z	1	1
26576 Y	½	1
26573 R	¾	1
26575 Q	1 FQ	1
26575 V (includes binding)	1	1
26577 Y	1 FQ	1
26574 J	½	1
26575 J	1 FQ	1
26574 Q	½	1
22626 Z *Illusions	1½	2
26573 R (backing Only)	3½	3
<i>*illusions based on 12 yd bolts</i>		
Approx. TOTAL YARDS IN QUILT: 7 (Total yardage does not include suggested backing)		



26577 J



26574 Z



26576 Y



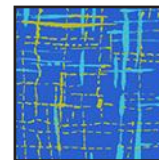
26573 R
also backing



26575 Q
Fat Quarter



26575 V
also binding



26577 Y
Fat Quarter



26574 J



26575 J
Fat Quarter



26574 Q



22626 Z
illusions



Tango complete project includes 11 Prints / 9 Bolts

TANGO

ORBIT



Designed by: Jessica VanDenburgh of Sew Many Creations
Quilt Size: 49" x 63"

Sarah Summers



Quilt Size: 41" x 56"

Designed by: Sue Harvey & Sandy Boobar of Pine Tree Country Quilts

Wholesale and retail patterns available at:

Pine Tree Country Quilts

207.827.3876 • susanharvey135@gmail.com

Also available at: Checker Distributors



Runner Size: 16" x 48"



Placemat Size: 19" x 14"

KIT CALCULATIONS

Woodland Dream Quilt Size: 41" x 56"		12 KITS	
SKU:	YARDS	BOLTS	
P3642A ALL			
26473 B (1 panel)	26473 A (1 panel)	2/3	1
26475 B	26475 A	3/4	1
26476 B	26476 A	1/2	1
26478 N	26478 A	2/3	1
26478 A (includes binding)	26478 R	1	1
23528 EK *Color Blends II	23528 EK	5/8	1
26476 B (Non-Directional Backing)	26476 A	2 7/8	3
26477 B (Directional Backing)	26477 A	3 2/3	3

*Color Blends based on 12 yd bolts
Approx. TOTAL YARDS IN QUILT: 7
(Total yardage does not include suggested backing)

Special Instructions:

Pattern includes instructions for the wall quilt and for the separate table set (runner and 4 placemats)

©Sarah Summers

Pattern Name: Woodland Dream PT1652

Wholesale Price: \$5.25
FOR SALE PATRN 3642A



Pattern Covers will feature these fabrics.

3 patterns minimum for wholesale orders.

above sku orders 12 patterns
Project includes 8 Prints / 14 Bolts



26473 A or B 26475 A or B 26476 A or B



26478 N, A, R 26477 A or B quilt backing only



23528 EK Color Blends II



KIT CALCULATIONS

Woodland Dream RUNNER & PLACEMATS Runner Size: 16" x 48"		12 KITS	
SKU:	YARDS	BOLTS	
P3642C ALL			
26474 N	26474 A	2/3	1
26476 B	26476 A	1/2	1
26478 N (includes binding for runner)	26478 A	1/2	1
26478 A (inc. binding for placemats)	26478 R	1 1/8	1
23528 EK *Color Blends II	23528 EK	5/8	1
26476 B Backing	26476 A	2 7/8	3

*Color Blends based on 12 yd bolts
Approx. TOTAL YARDS IN QUILT:
(Total yardage does not include suggested backing)



26474 N or A

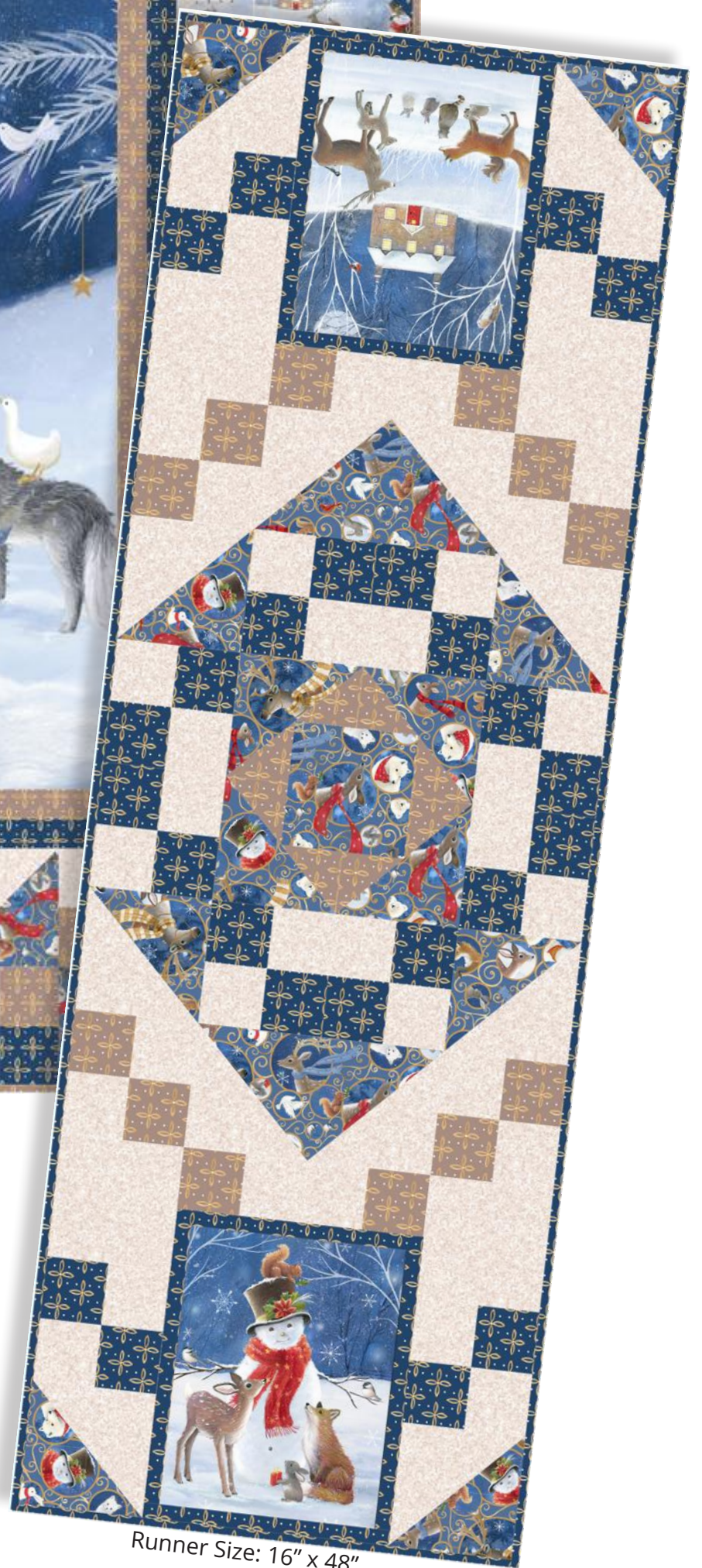
FOR SALE PATTERN
Ships April - Winter 2018



Quilt Size: 41" x 56"
Designed by: Sue Harvey & Sandy Boobar of Pine Tree Country Quilts



Placemat Size: 19" x 14"



Runner Size: 16" x 48"